



Your Secret Tool for Success: *Libraries and their Resources*



Ashley Orehek Rossi, Western Kentucky University
Denise Wetzel, Penn State University

Meet a Science Librarian



Ashley



Hi!

I am a STEM Librarian

My educational background is in **Meteorology, Emergency Management, and Information Sciences.**

The subjects I support at my school:

- Agriculture
- Biology
- Chemistry
- Earth, Environmental and Atmospheric Sciences
- Engineering and Applied Sciences
- Mathematics
- Physics and Astronomy

Meet a Science Librarian



Denise



Hi!

I am a Science and Engineering Librarian

My educational background is in **Interdisciplinary Humanities, Oceanography, and Library and Information Studies.**

The subjects I support at my school:

- Biomedical Engineering
- Chemical Engineering
- Mathematics
- Statistics (mathematical)

First Tool Finding Your Library

School Libraries



Public Libraries



Academic Libraries



Second Tool **Library Books**

School Libraries

- Adapts to age of students and reading levels
- Find:
 - Picture books
 - Fiction books
 - Nonfiction books
 - Maps

Public Libraries

- Adapts to all ages and reading levels
- Find:
 - Best sellers
 - Self-help books
 - Repair manuals
 - General introductions to topics
 - Movies, Video games

Academic Libraries

- Adapts to undergraduate students and higher
- Find:
 - In-depth topics
 - Textbooks
 - Course-specific materials



Third Tool **Library Databases**

School Libraries

- Dependent on:
 - Grade levels
- Examples:
 - BritannicaSchool
 - Explora
 - NoodleTools
 - Power Search

Public Libraries

- Dependent on:
 - Availability through state library
- Examples:
 - Ancestry
 - Newspaper Readers
 - Homework help
 - General Information

Academic Libraries

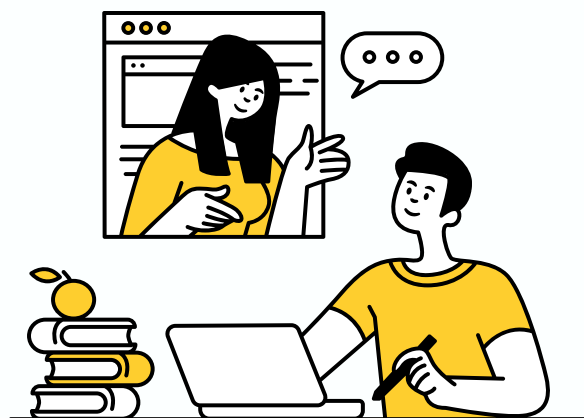
- Dependent on:
 - Research interests
 - Degree programs
- Examples:
 - Web of Science
 - Academic Search Complete
 - JSTOR
 - Gale
 - GeoRef
 - AMS Journals



Fourth Tool Library Technology

School Libraries

- Learn where and how to access resources
- Learn how to connect with information that is appropriate and reliable.
- Find virtual bookshelves abound
- Specific technologies:
 - 3D printers
 - Cameras
 - ...and more.



Public Libraries

- Free internet access
- Computer Labs
- Other Equipment
 - VR headsets
 - Assistive technology
 - Laptops

Academic Libraries

- Objects
 - Calculators, Tablets, Laptops, Cameras, Headphones.
- Studios
 - VR studios, AR studios
- Special rooms
 - Whisper sound Recording booths
- Tools
 - 3D printers

Fifth Tool

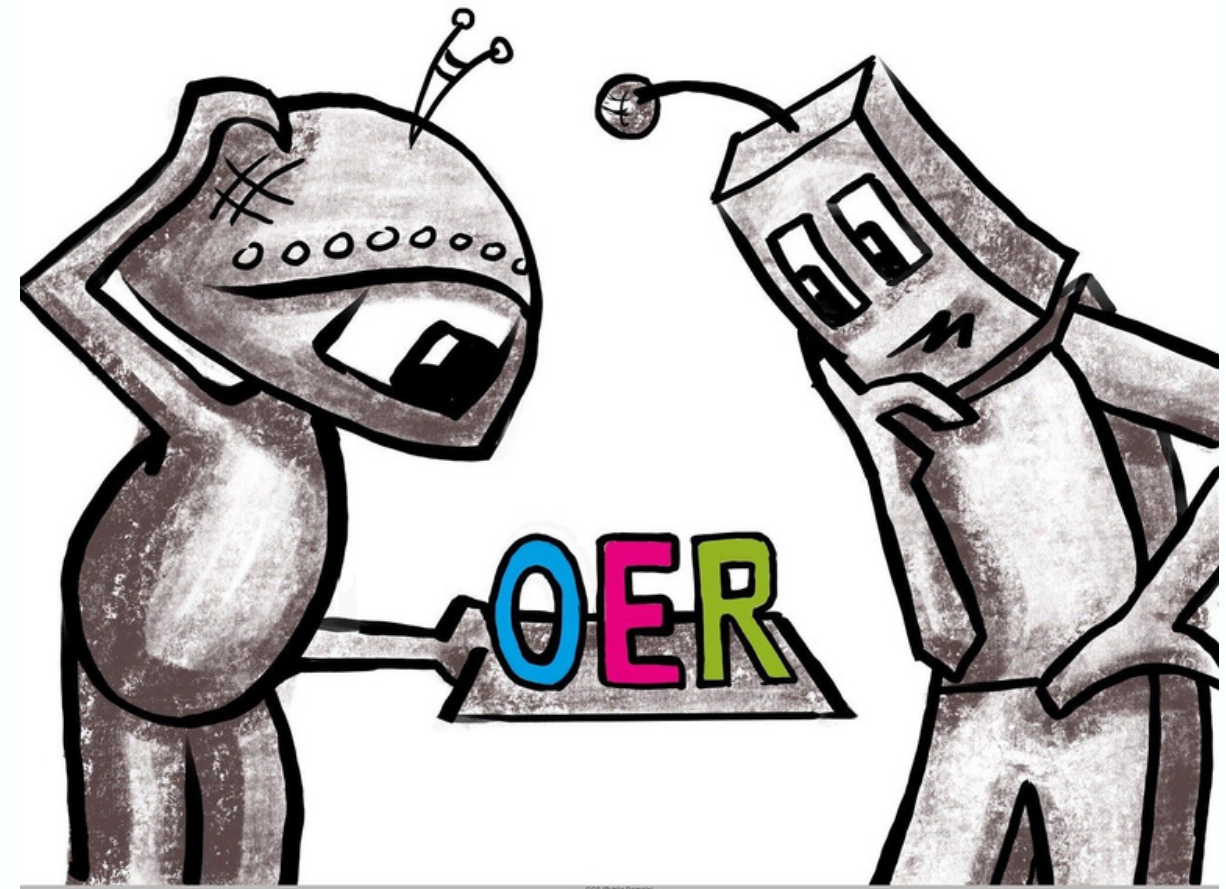
Open Educational Resources (OER)

- Alternative / Supplement to course materials
- Freely available
- Editable
- Interactive
 - NASA's Climate Time Machine
 - NOAA's NCEI Climate Data Online



Online Commons

- OER Commons general
- Climate Commons



Sixth Tool

Data on data

- Find Historic Data
 - Paleoclimatology Data
- Find Local Atmospheric Data
 - Philadelphia Weather Data
- Access Data Depositories
 - IRI/LDEO Climate Data Library
- Find Data in Compendiums
 - OECD data on climate change



Seventh Tool Special Collections

- Find in academic libraries
- Get hands-on with history
- Rare, old materials
 - Ephemera
 - Newspapers
 - Photographs
 - Genealogy
 - Diaries



Weather records for Philipsburg, Pa., kept by Hardman Philips and Thomas Lever
by Philips, Hardman; Lever, Thomas

Archival Material ● Special Collections, 104 Paterno, 1983-0003H GST/B/4
/S01.02, Special Collections Library (UP)

Abstract

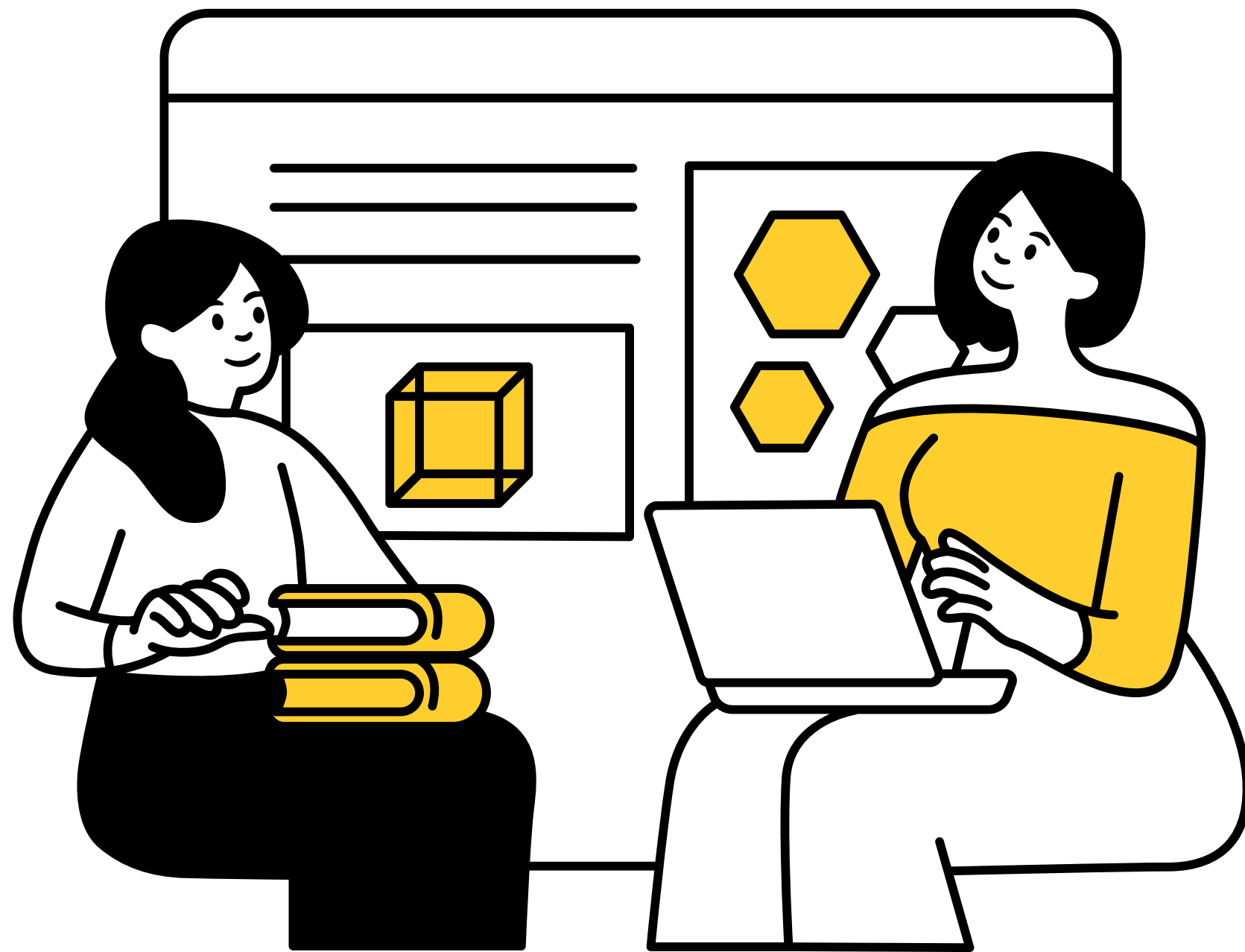
Hardman Philips began keeping this weather diary on 1 January 1822; each day he records the barometer and thermometer temperature at 8 a.m., 3 p.m., and 10 p.m., winds, and general remarks about the weather and some personal activities. Thomas Lever recorded the weather 20 December 1822-6 March 1823 and 28 May 1823-13 April 1825, the last date of entry. Personal notes include attending Mr. Hebberton's funeral, the birth of Philips' daughter Sophia, and Lever's move to a hotel, his marriage, and move to the stone house.

Put Your Toolbox Together!

- Free to use
- Will always be there
- Adaptable
- Flexible
- Multidisciplinary
- Community hubs

Why Should You Use Your Library?





Thank you!

Ashley Orehek Rossi
OrehekRossi@gmail.com

Denise Wetzel
dawetzel@psu.edu