



FAA/NWS Traffic Flow Management Weather Requirements Working Group (TRWG)

**Julie L. Adolphson, Cyndie Abelman, NWS;
Kevin Johnston, FAA**

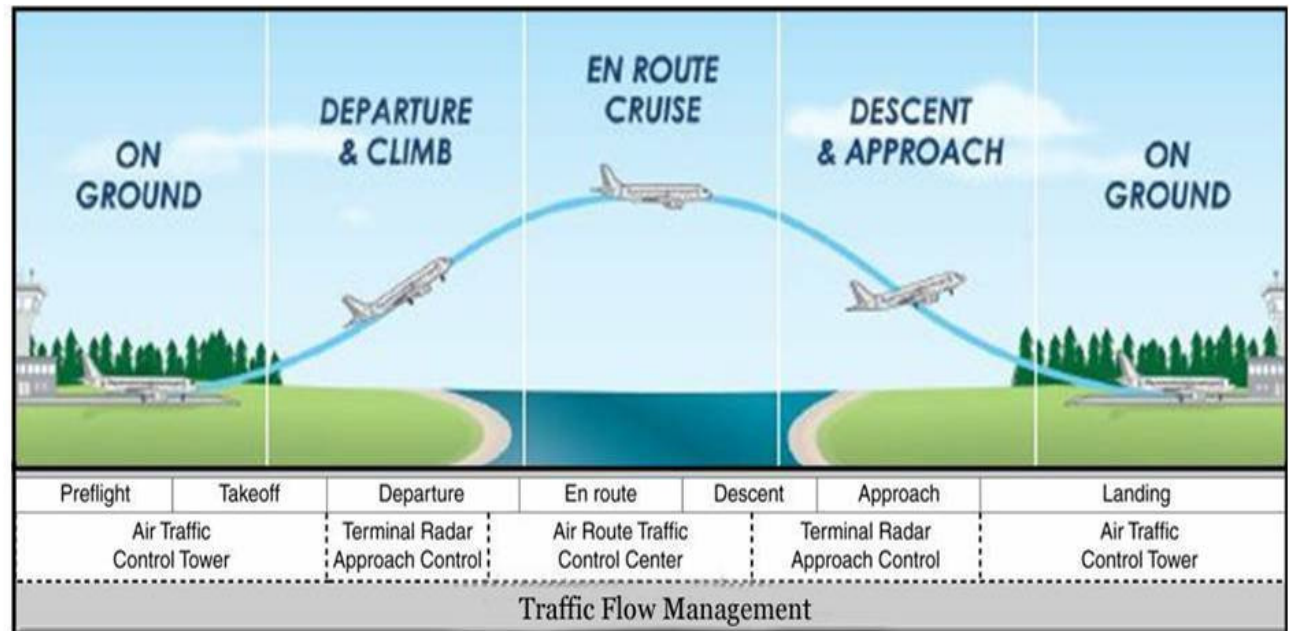


AMS 15 ARAM, Los Angeles, CA; 1-5 August 2011



Outline

- TRWG History
- Goals of Working Group
- NWS TFM Support
- Team Organization
- Progress to Date
- Future Plans

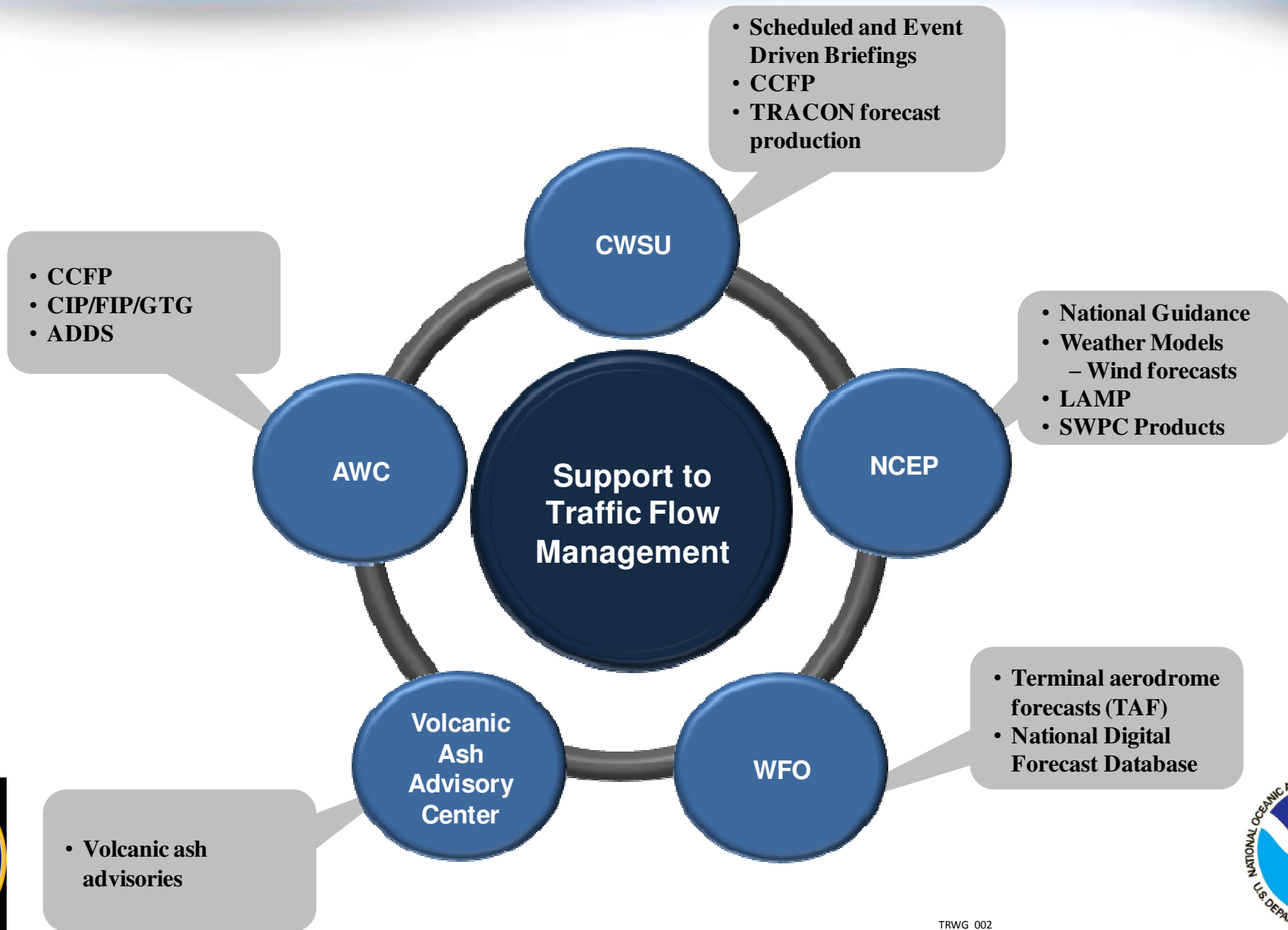


TRWG History

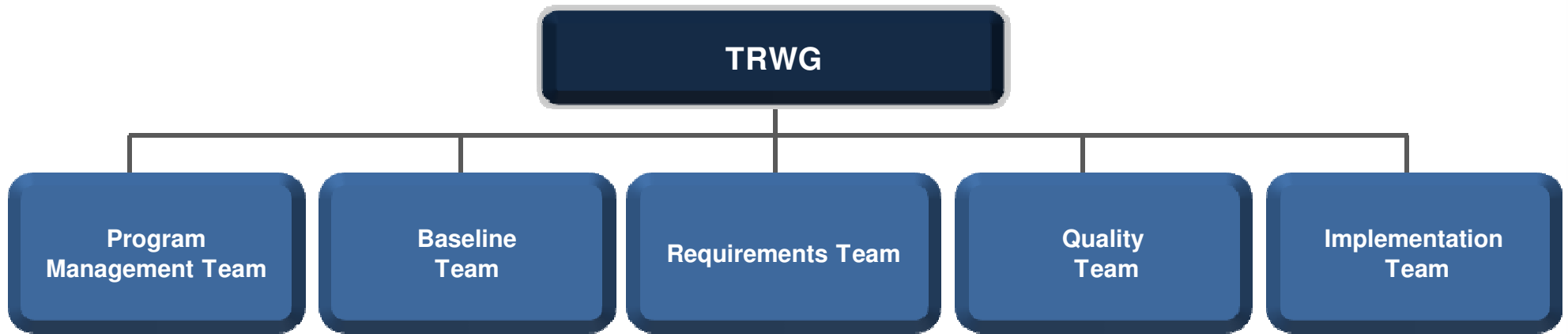
- **Formed August 2010**
- **Three Goals**
 - **Baseline Current Weather Support to Traffic Flow Managers**
 - **Determine requirements for near term until NextGen MOC**
 - **Develop Implementation Plan to begin October 2011**
- **Roadmap Delivered November 2010**



Weather Support to Traffic Flow



Team Organization



TRWG_004



Program Management

- **Develops Program Management Plan**
- **Provides Leadership to Team**
- **Coordinates with Agency Heads and Other Entities**
- **Identifies and Meets Challenges**



Baseline

- **Lead Agency NWS**
- **Identifies Current Capabilities**
- **Assists with Performance Measure Development**
- **Oversees Baseline Cost Project**
- **Performs Gap Analysis along with Requirements Team**

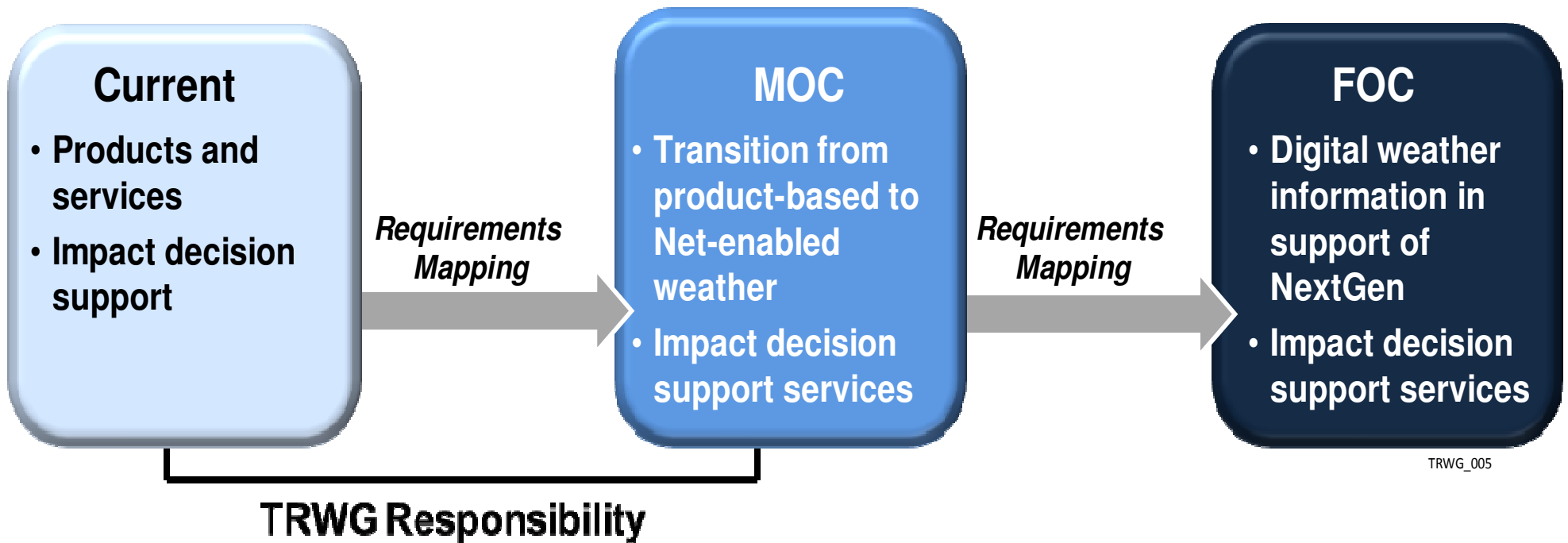


Requirements

- **Lead Agency - FAA**
- **MOC and Near-Term Weather Support Requirements**
- **Performs Gap Analysis along with Baseline Team**
- **Coordinates Across Agency Business Lines**



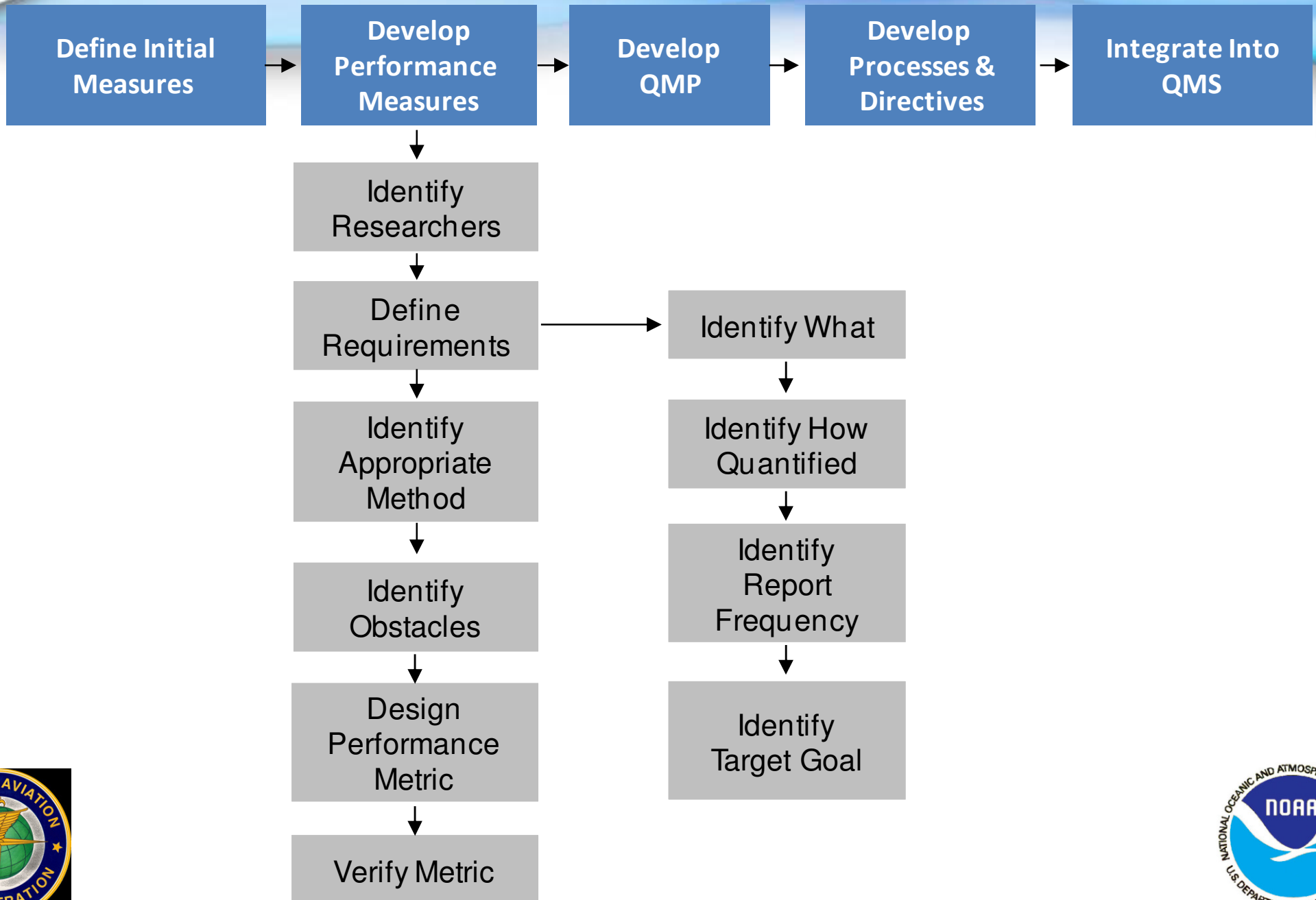
Requirements



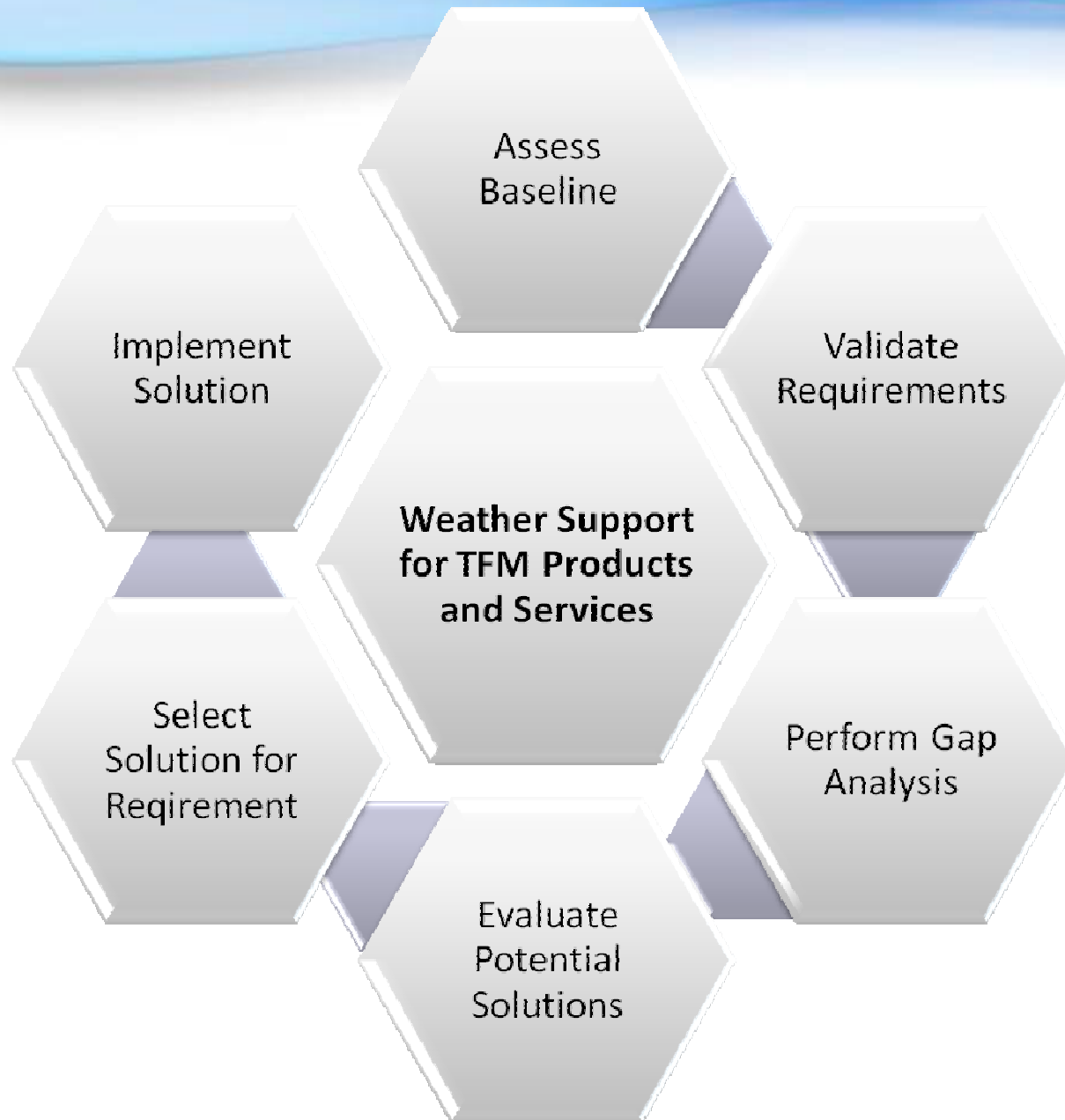
TRWG_005



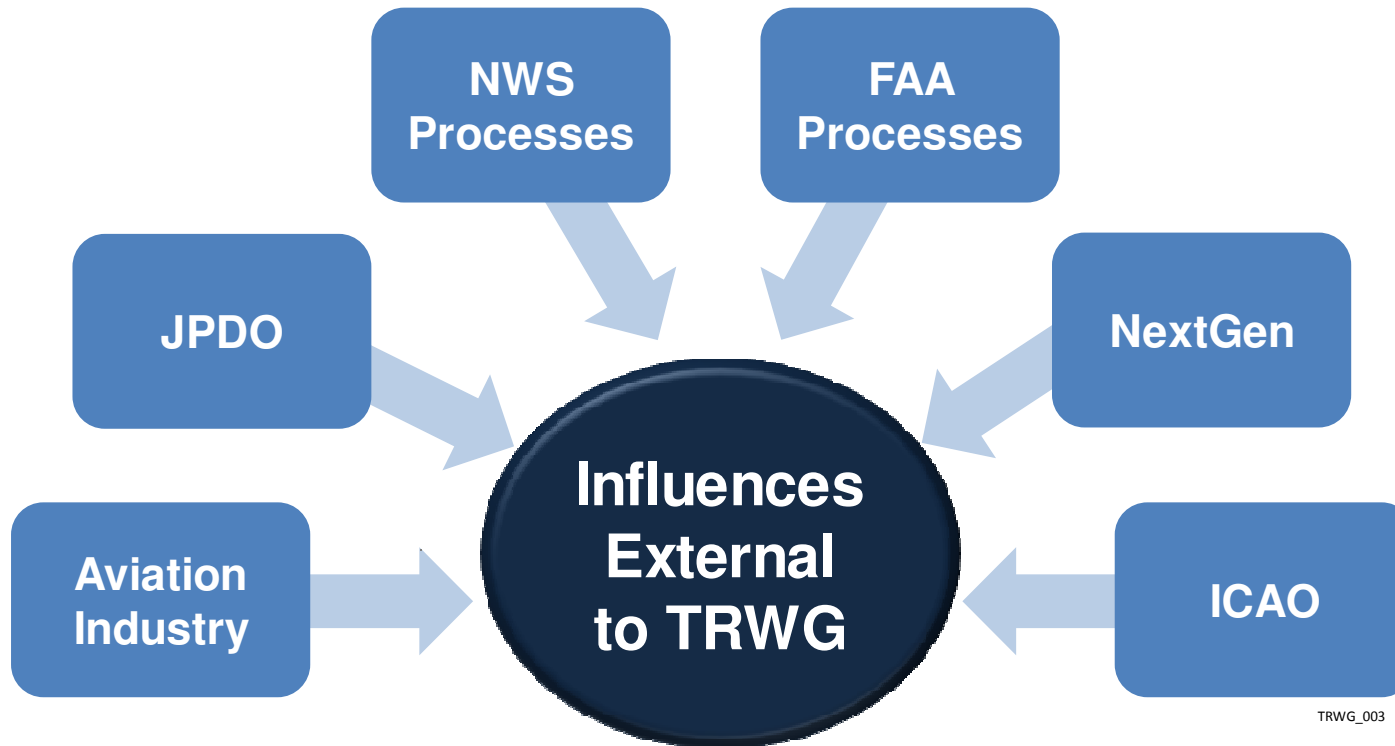
Quality



Implementation



Team's Influencers



Progress to Date

- **Roadmap Delivered November 2010**
- **Requirements Developed March 2011**
- **Baseline Cost Nearly Complete**
- **New Performance Measures Identified**
- **Draft Implementation Underway**



New Performance Measures for Baseline

- **Weather performance measures linked to Traffic Management Initiatives provided to NWS**
 - **En Route Performance Measure:**
 - **Airspace Flow Programs/En-route area (AFP 5 and 8)**
 - Lead-time for onset and cessation of thunderstorms with probability greater than 50% of occurrence
 - **Terminal Performance Measure:**
 - **Ground delay/Ground stops in Terminal areas for the 30 core airports**
 - **Lead-time for onset and cessation of: (and timing error)**
 - Marginal VFR and IFR conditions
 - Wind direction change of 30 degrees or more with speed GTE 12 knots
- **TRACON Performance Measure:**
 - **Lead-time for the onset and the cessation of a thunderstorm with a probability equal to or greater than 50% that are within 150nm (Diameter) of the 30 core terminals**



Future Plans

- **Plenary Meeting**
 - End of August
 - FAA Command Center
- **Deliver Implementation Plan in September 2011**
- **Continue Developing New Performance Measures**
- **Begin Implementation in October 2011**

