

Preparing to adapt: Are public expectations in line with climate projections?

Carley Eschliman, Emma Kuster, Joseph Ripberger, Adrienne Wootten

Research Questions

- 1) Do members of the public expect the same future temperature and precipitation shown by climate projections?
- 2) What factors contribute to future temperature and precipitation expectations among members of the public being consistent or inconsistent with climate projections?

Data

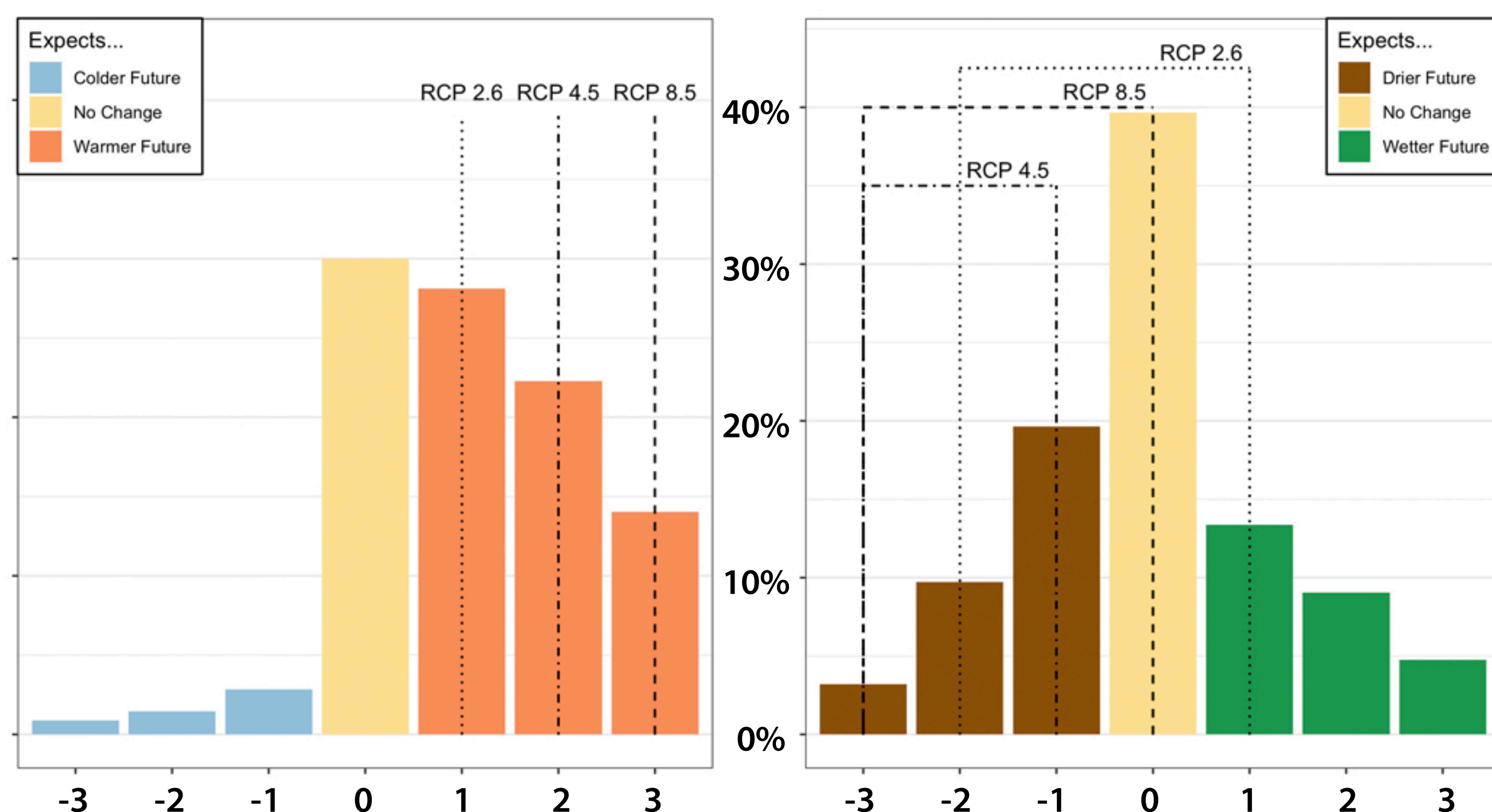
- 1) Oklahoma M-SISNet Winter 2019 Survey
- 2) Downscaled climate model ensembles of projected change in temperature and precipitation (2071-2099)

Factors Inspected

Gender	Recent weather experience
Race	Survey response of extreme cold, dry, or wet conditions
Age	Recent temperature experience
Urban / Rural	Survey response of three-year temperature anomalies
Political affiliation	

Expectations

Survey Category	Temperature Expectation	Precipitation Expectation
-3	Decrease by 8°F or more	Decrease by 10% or more
-2	Decrease by 4° to 8°F	Decrease by 5% to 10%
-1	Decrease by 1° to 4°F	Decrease by 1% to 5%
0	Stay about the same	Stay about the same
1	Increase by 1° to 4°F	Increase by 1% to 5%
2	Increase by 4° to 8°F	Increase by 5% to 10%
3	Increase by 8°F or more	Increase by 10% or more



Oklahomans generally expect a future that is **colder** and **wetter** than what projections suggest.

Expectations of future temperature and precipitation are **most consistent with RCP 2.6** projections

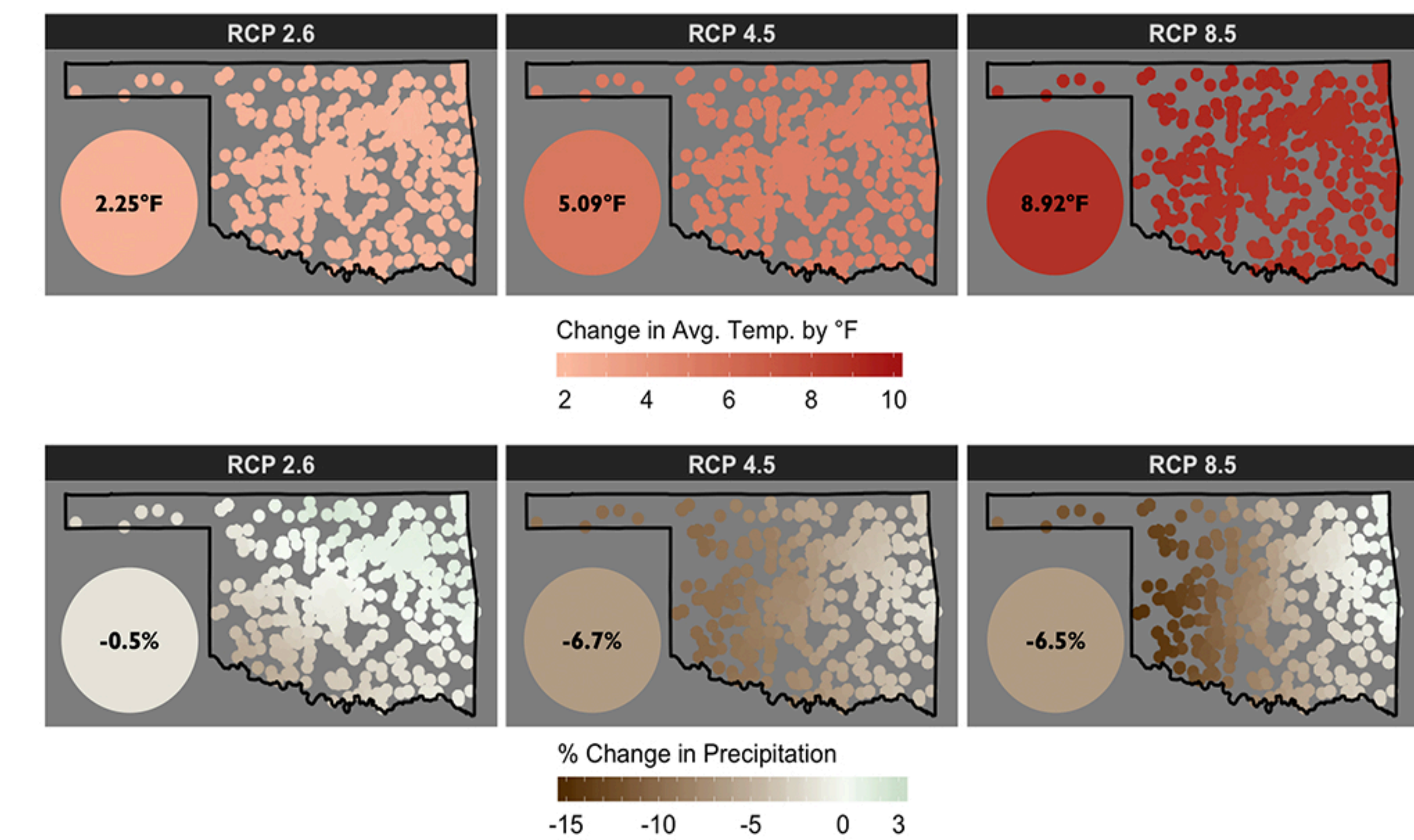
The consistency of expectations with projections is significantly affected by **age, political affiliation, gender, perceived temperature anomalies, and recent dry weather experience.**



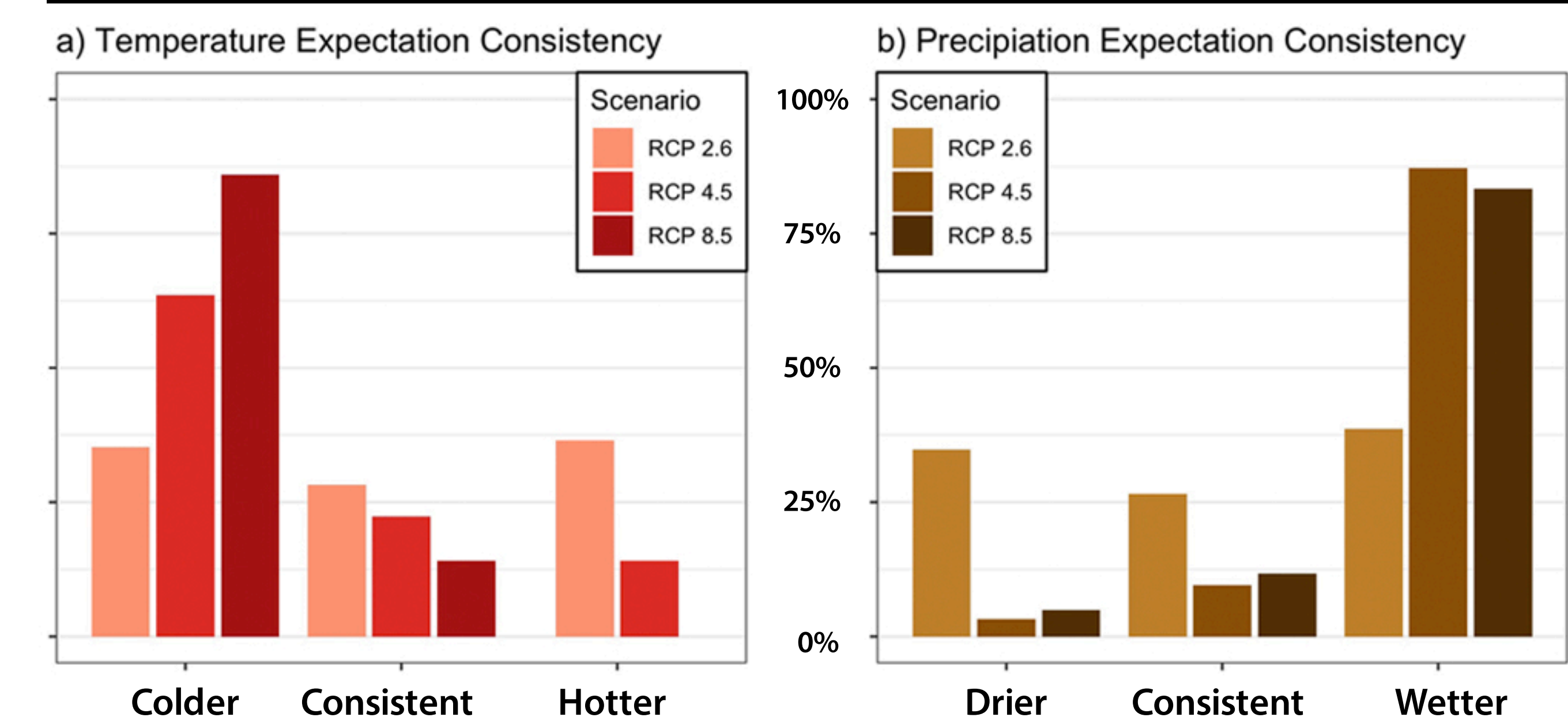
Scan to read full paper



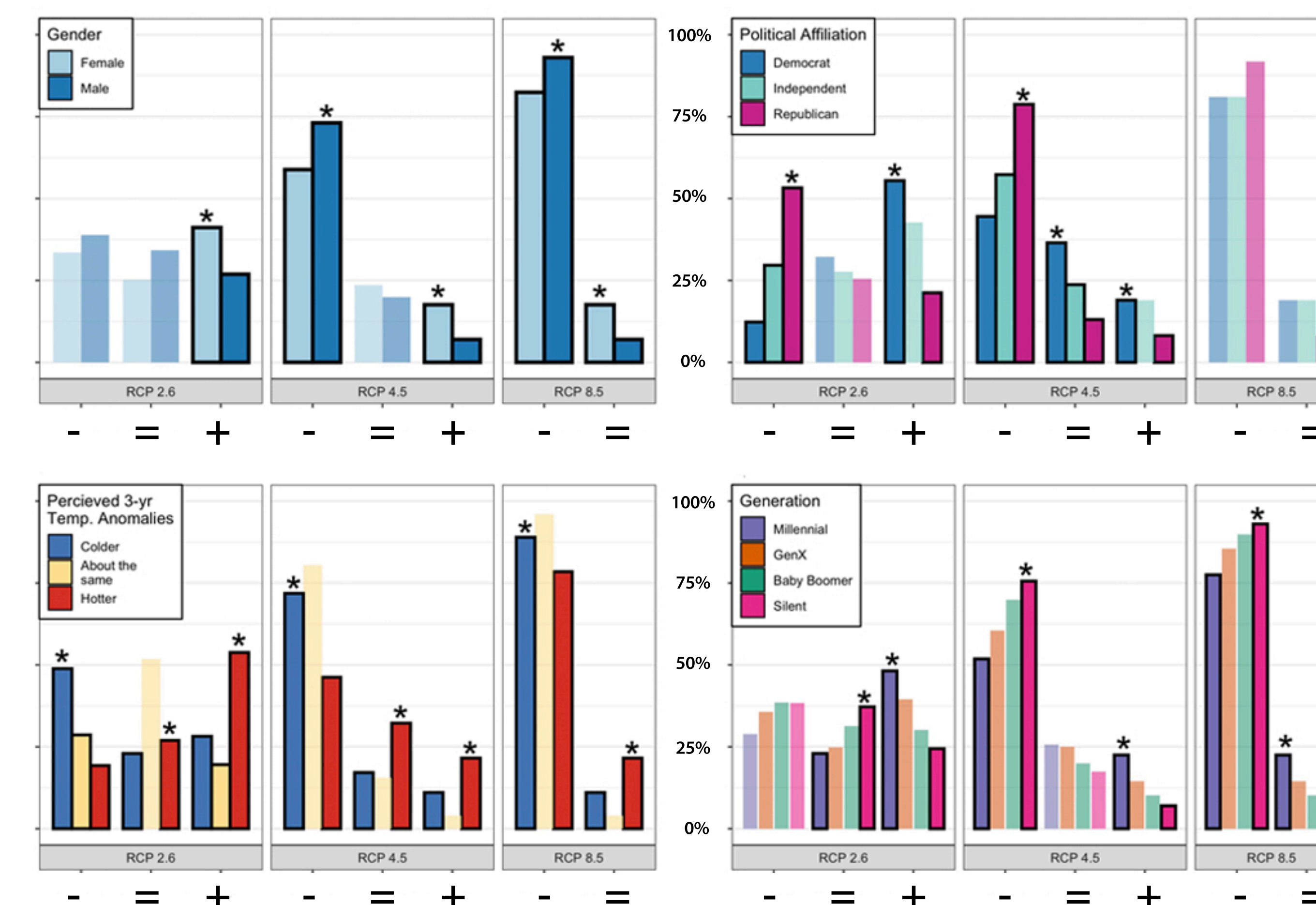
Projections



Consistency



Significant Factors for Temperature



Contact

Carley Eschliman, Atmospheric Science & Communication '20
cme73@cornell.edu