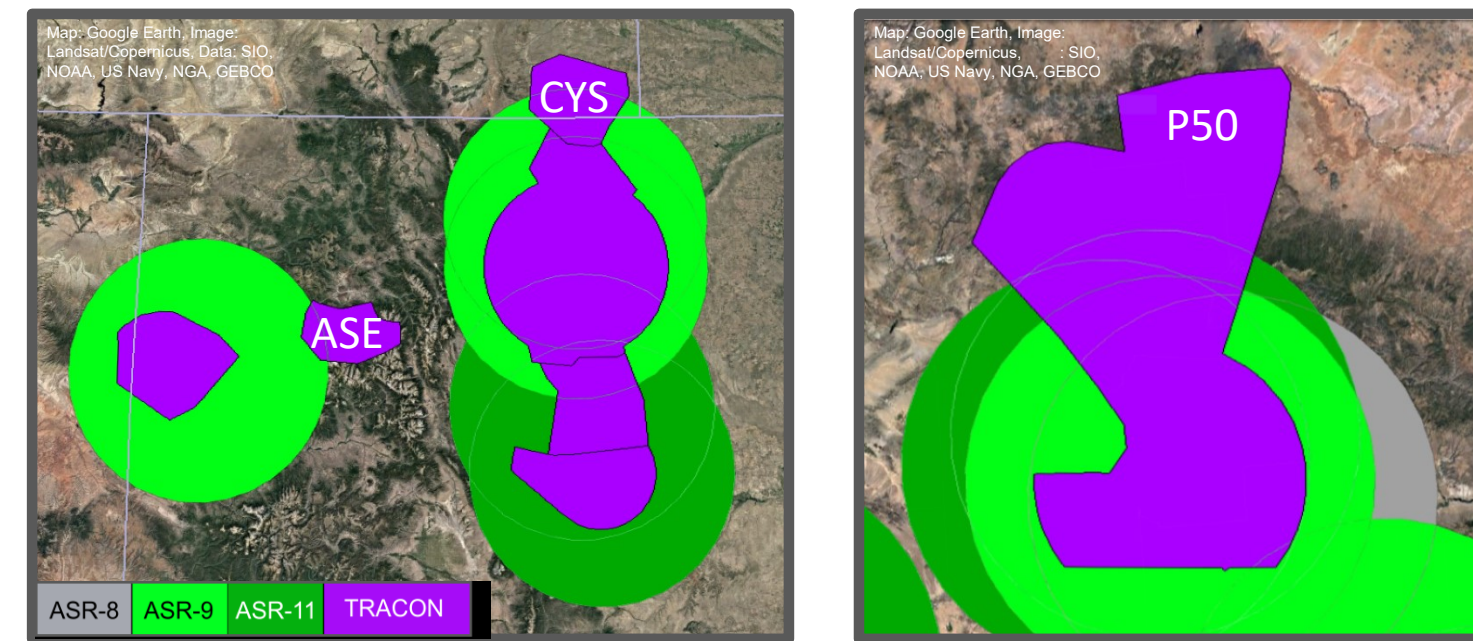


## The Problem

Terminal ATC's weather needs are not being met today!

- Weather on STARS\* is provided by ASR radars **designed for aircraft surveillance, not weather**
- Terminal controllers **turn off clutter-contaminated weather**
- Radar **coverage is limited** at some TRACONs

\* STARS is the Standard Terminal Automation Replacement System used by Terminal Air Traffic Control to show aircraft and weather



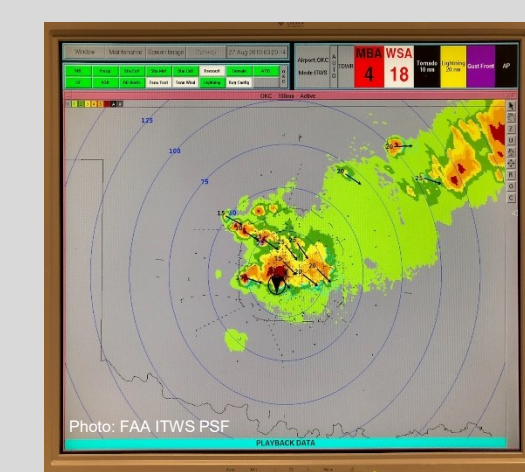
## Background

### Terminal Weather Precip Options



#### ASR / ASR Mosaic

- Current weather on STARS
- ASR-8, 9, 11 fan beam radars
- 28 sec update rate
- Refreshes full radar volume each update
- Simple radar mosaic



#### ITWS Long Range Mosaic

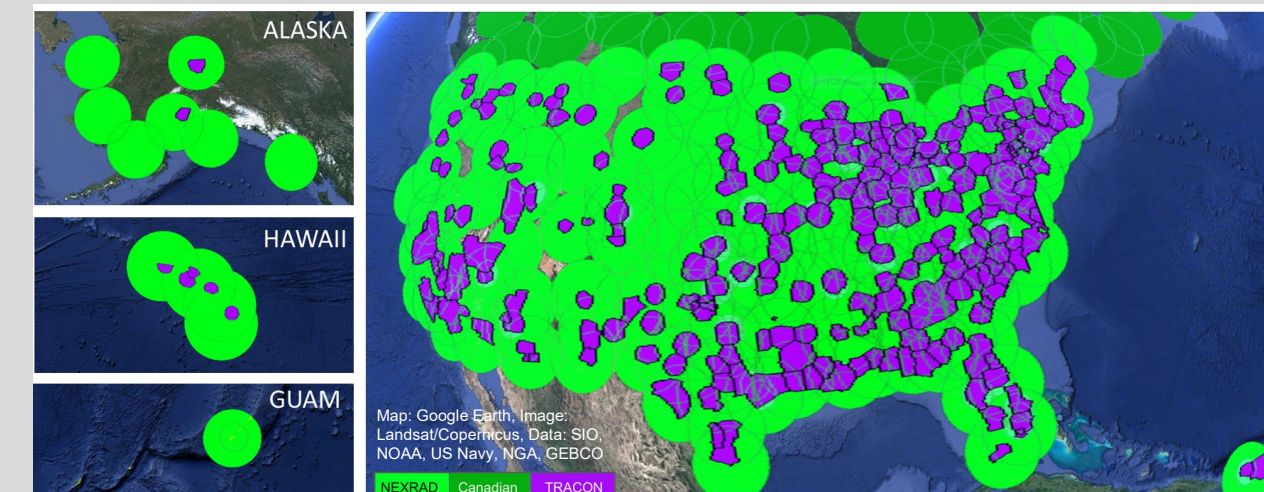
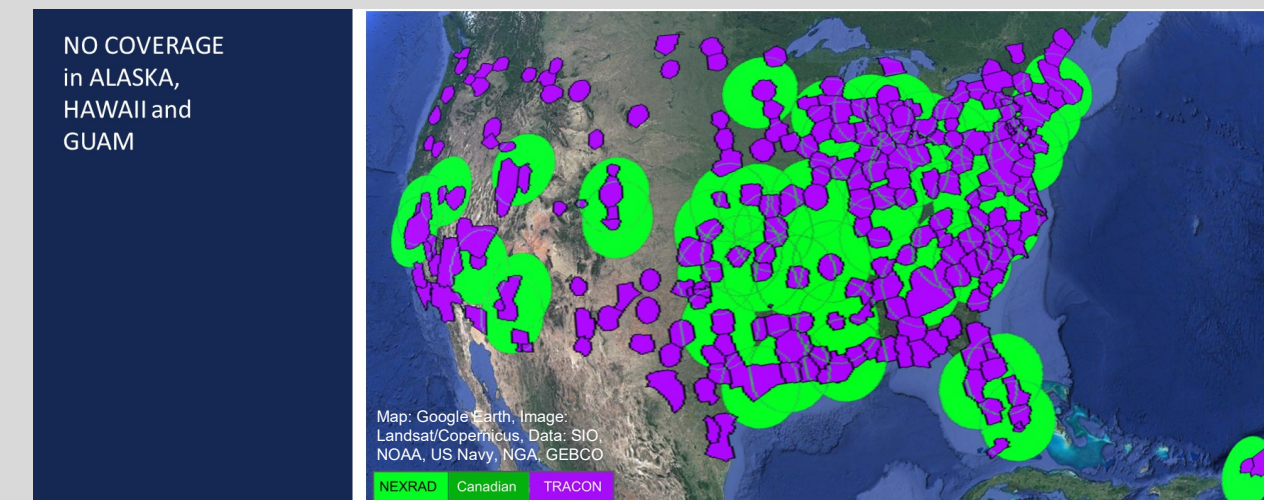
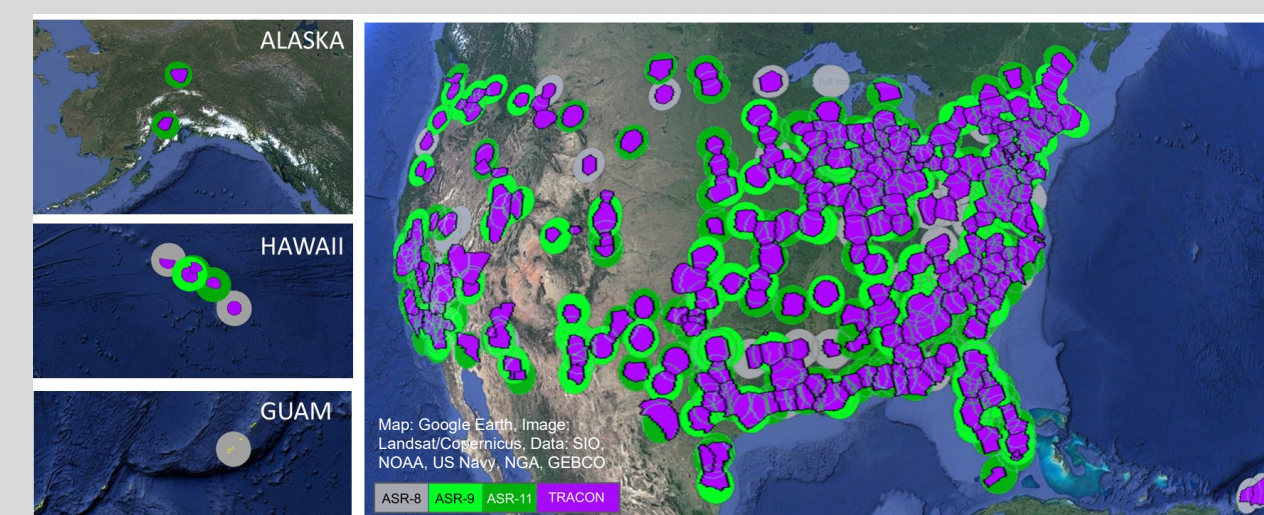
- Mosaic of NEXRAD and TDWR pencil beam radars
- 150 sec mosaic update rate
- Refreshes radars at end of volumes
- 34 TRACON locations



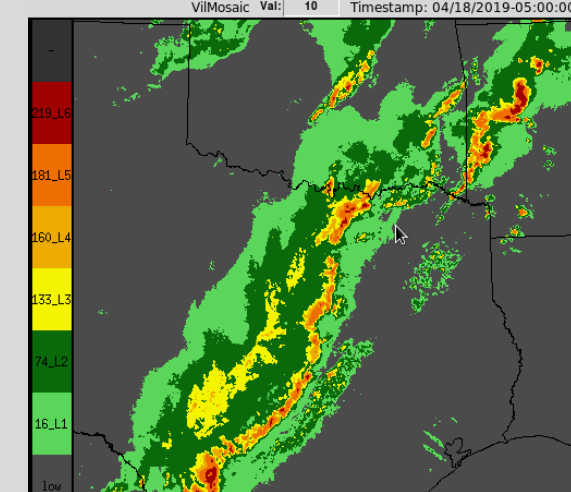
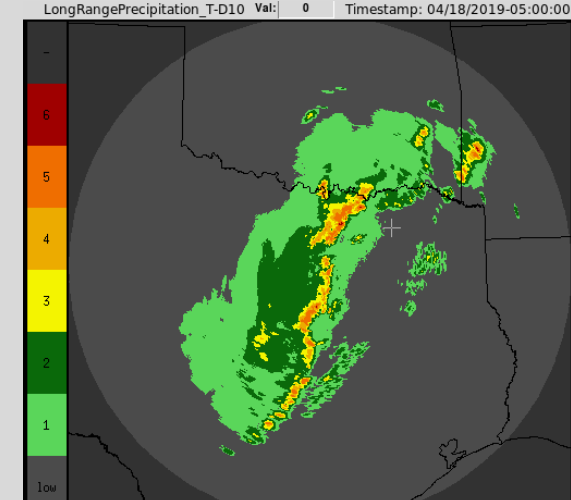
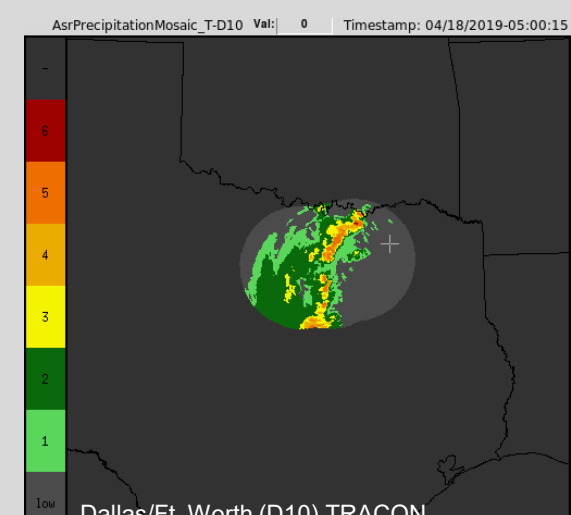
#### NextGen Weather Mosaic

- Mosaic of all NEXRAD and TDWR pencil beam radars
- 25 sec mosaic update rate
- Refreshes radars with each new tilt
- Nationwide coverage

### System Coverage

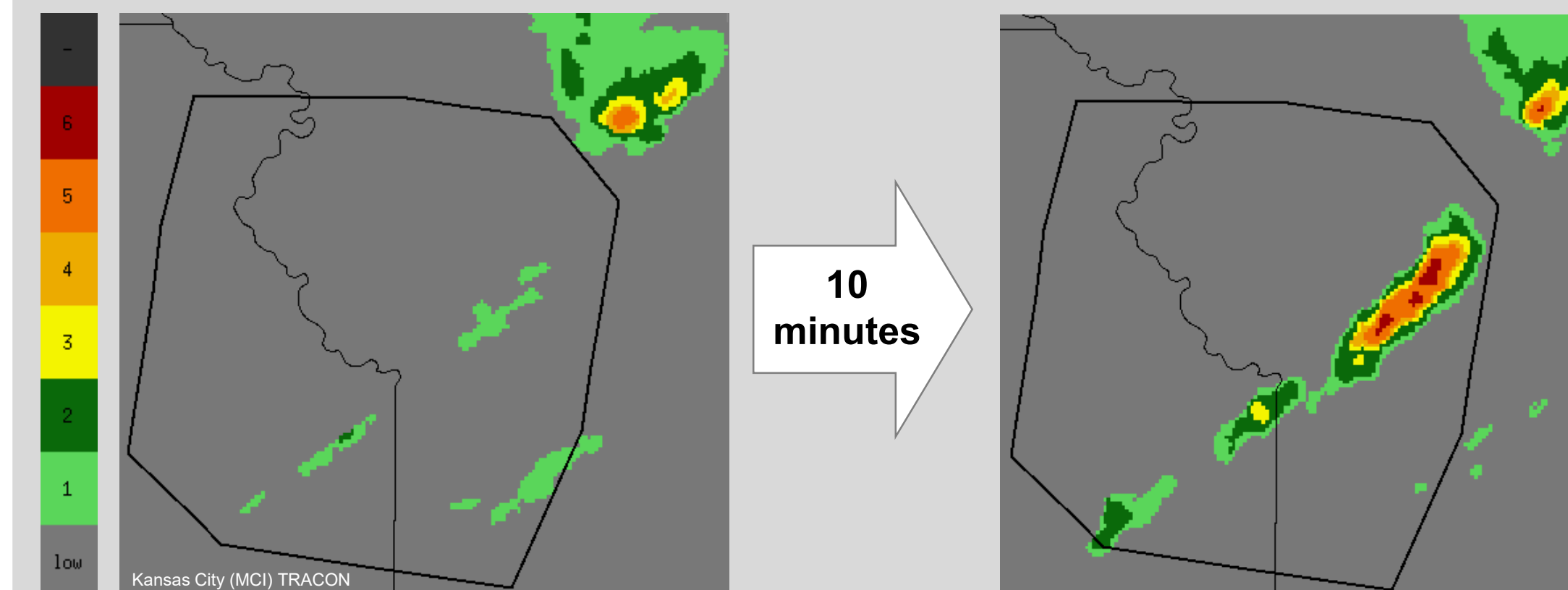


### Terminal Coverage



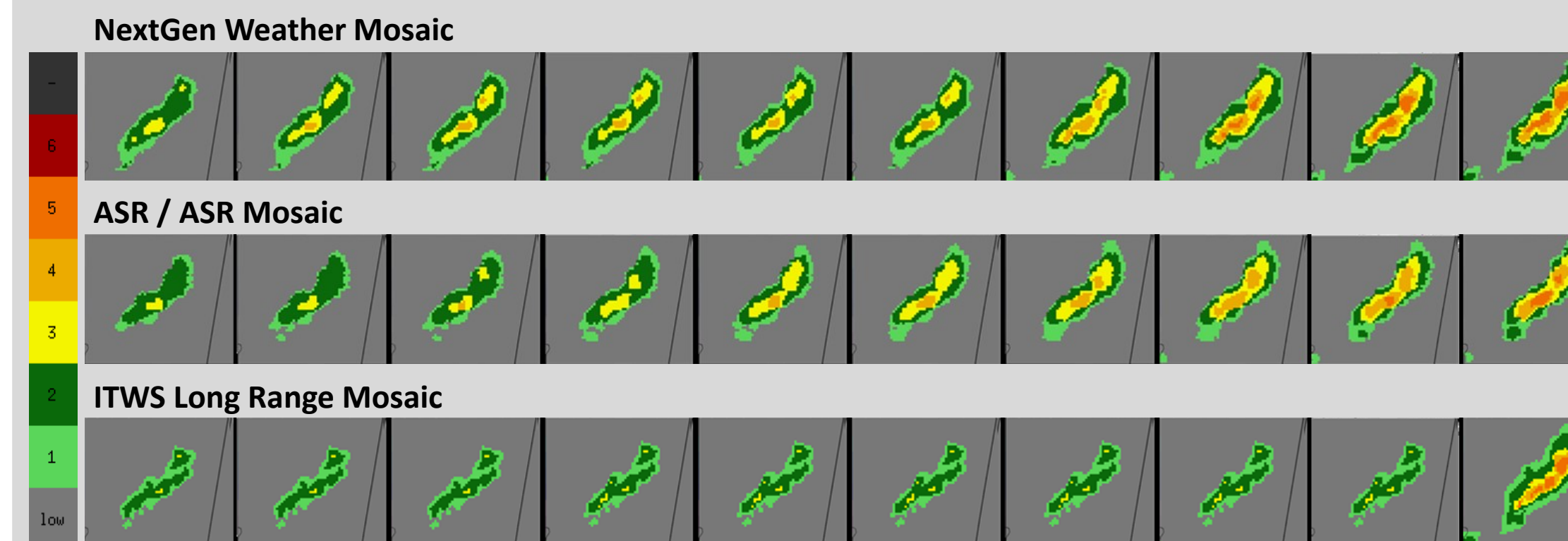
## Analysis

### Update Rate of Weather on the Glass



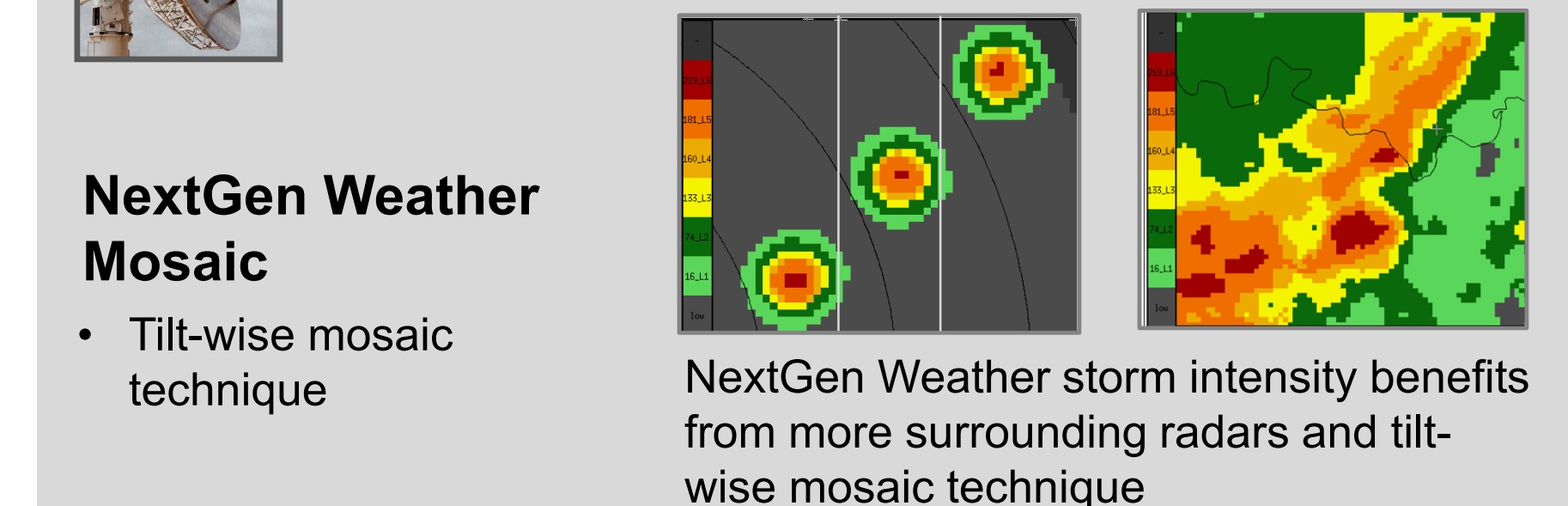
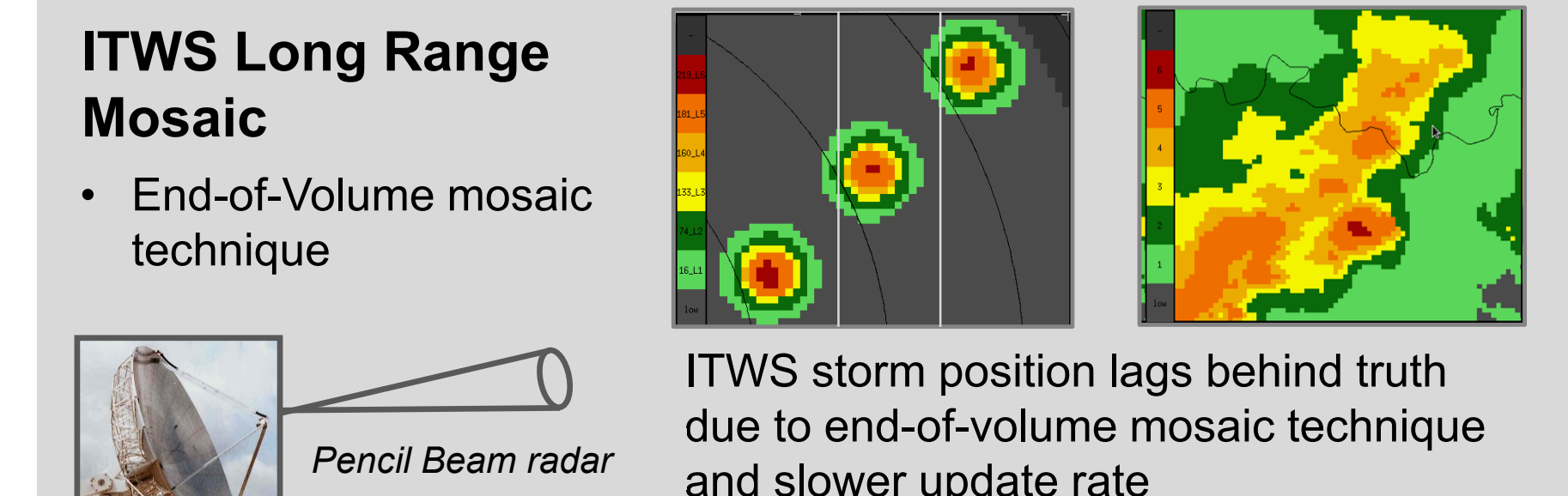
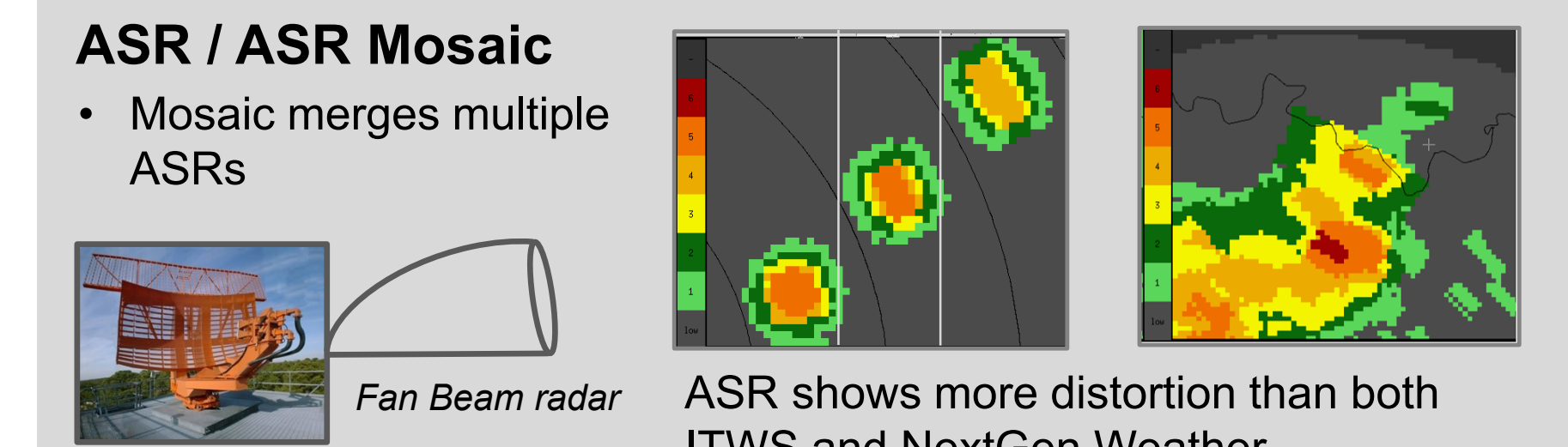
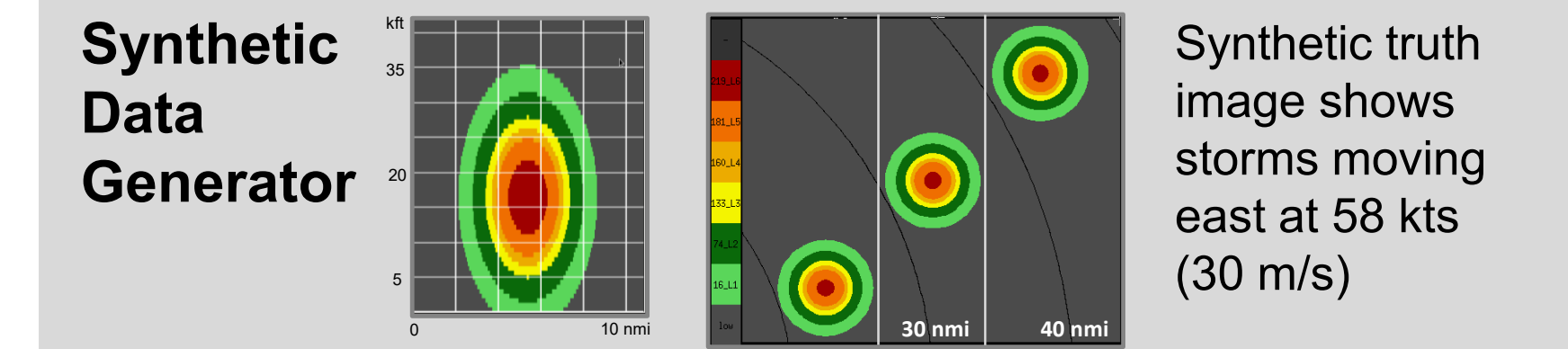
• **Rapid update rate is critical when storms are growing.** As seen above, in just **10 minutes** level 1 precip has evolved into **severe level 6 thunderstorm.**

• The images below compare NextGen Weather, ASR, and ITWS, illustrating the rapid growth from small spot of level 3 to widespread levels 3, 4, and 5 over the **central 3.75 minutes.**



• ITWS, with its 150 sec update, misses most of the growth during this time period.

### Radar Distortion of Weather



## Summary

	ASR / ASR Mosaic	ITWS Long Range Mosaic	NextGen Weather Mosaic
<b>PROS</b>	<ul style="list-style-type: none"> <li>• Fast radar update rate (28 sec)</li> </ul>	<ul style="list-style-type: none"> <li>• Good weather depiction</li> <li>• Operationally available today</li> </ul>	<ul style="list-style-type: none"> <li>• Excellent weather depiction &amp; coverage</li> <li>• Uniform architecture - 25 sec update</li> </ul>
<b>CONS</b>	<ul style="list-style-type: none"> <li>• Limited radar coverage</li> <li>• Fan beam distorts weather</li> </ul>	<ul style="list-style-type: none"> <li>• Limited radar coverage &amp; update</li> <li>• Storm position and growth lag</li> </ul>	<ul style="list-style-type: none"> <li>• Not yet deployed</li> </ul>