

Applications of Statistical Mechanics of Vortex Gases to Tornadogenesis

Doug Dokken, Kurt Scholz, and Misha Shvartsman, Department of Mathematics, University of St. Thomas, St. Paul, MN, USA, Pavel Bělík, Department of Mathematics, Augsburg College, Minneapolis, MN, USA, Corey K. Potvin, Cooperative Institute for Mesoscale Studies, and NOAA/OAR/National Severe Storms Laboratory, Norman, OK, USA, Brittany Dahl, School of Meteorology, University of Oklahoma, Norman, OK, USA, Amy McGovern, School of Computer Science, University of Oklahoma, Norman, OK, USA

American Meteorological Society Meeting, Conference on Severe Local Storms: Modeling of Storm and Tornado Dynamics I, November 3, 2014, Madison, WI

Introduction

Recent radar studies indicate power laws for horizontal velocity in terms of distance from the axis of rotation [6] and the fractal nature of the tornado-related vorticity field with respect to the grid size [2]. As the power increases the likelihood of strong tornados appears to increase.

What are Power Laws?

A Power law is a relationship of the form $\zeta = Cr^b$, where C and b are constants, and ζ and r are physical quantities. In our case ζ is the velocity or the vorticity, and r is the distance to the axis of rotation or respectively, the length scale in which we view the data. They relate how the horizontal velocity or the vorticity change with distance from the axis of rotation or respectively, the length scale. Power laws suggest self similarity or fractal structure. Power laws can be obtained from radar data.

Filtering the Radar Data

Cai [2] filtered radar data from a particular elevation slice using a specific length scale. The filtering removed frequencies smaller than those that could be effectively represented in the given length scale. He then interpolated the data onto a grid with Δx and Δy corresponding to the particular length scale.

Pseudo-Vorticity

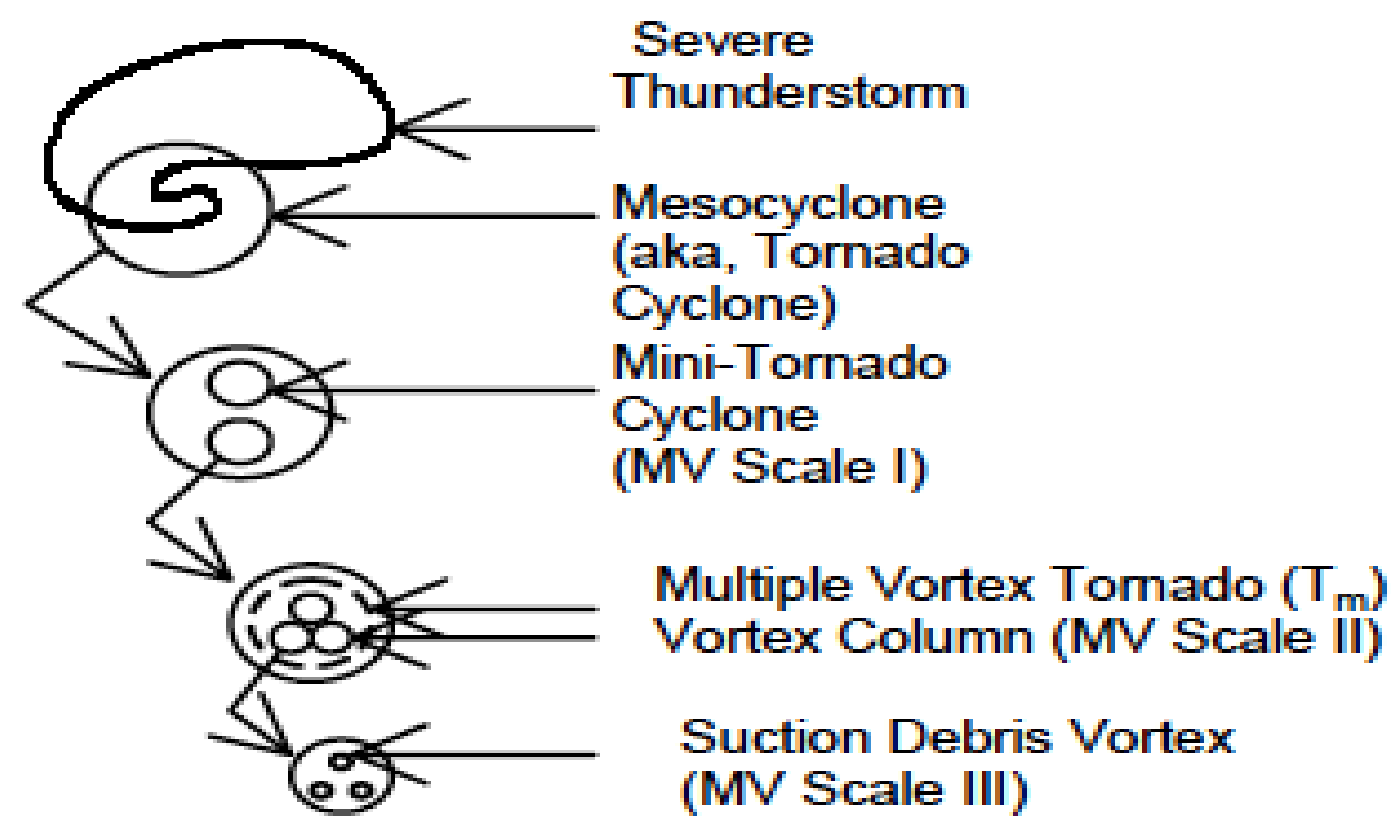
Pseudo-vorticity is the difference between the maximum outbound and the maximum inbound velocity, divided by the distance between the two. The following graph plots the log of the pseudo vorticity against the log of the length scale for nine different length scales. A strong tornado was on the ground at this time. For times leading up to tornado formation the slopes where > -1.6 . The regression lines Cai calculated strongly fit the data over scales between that of the mesocyclone core and that of the “edge” of the mesocyclone, thereby indicating that a power law for vorticity vs. scale is valid. As those mesocyclones that produced tornadoes approached tornadogenesis, the slope of the line decreased.

Acknowledgements

Doug Dokken, Kurt Scholz, Misha Shvartsman, and Pavel Bělík were supported by the NSF CSUMS grant DMS-0802959.

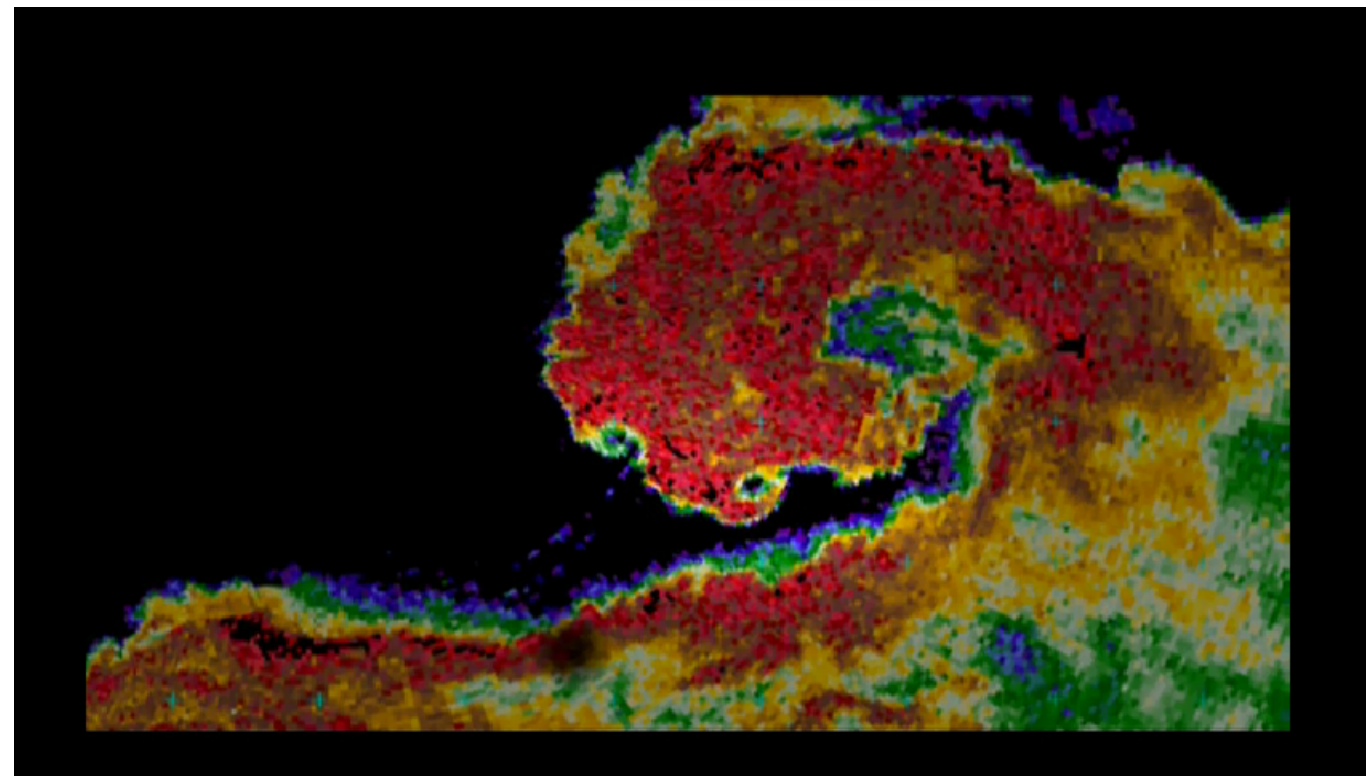
Wurman’s Results for Strong Tornadoes [6]

Using data obtained from mobile Doppler radar, Wurman found power laws relating velocity and distance to the axis or rotation, $v = Cr^{-b}$, where $0.5 \leq b \leq 0.6$. His studies suggest a power law for the drop-off of the velocity at the tornado scale outside the tornado core. The tornadic flow would roughly approximate a modified Rankine vortex.



Fractal hierarchy of multiple vortices, *BAMS*, **58**, 900–908

Tornado Fractal



©Josh Wurman. Radar reflectivity image of a hook echo with vortices moving into a tornado. This image exhibits geometric self similarity: smaller hook echos on a larger hook echo.

Vortex Gas Model

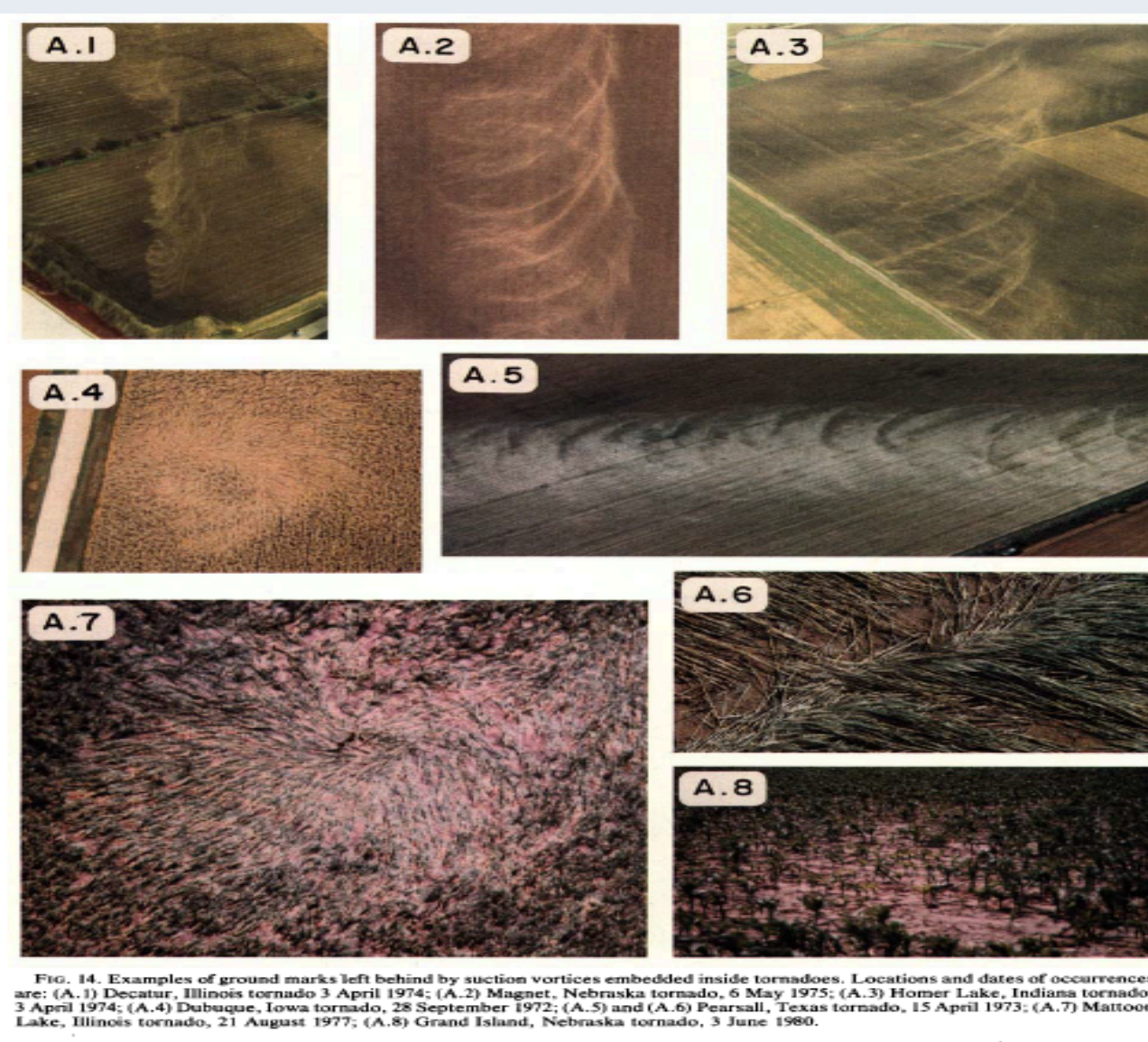
The vortex gas model [3] treats large collections of vortices as if they form a gas. The interaction of the vortices is governed by the laws of fluid dynamics. There is a notion of temperature (due to Lars Onsager): negative temperatures are hotter than positive temperatures, infinite temperatures are between the positive and negative temperatures ($-\infty = +\infty$), the closer a negative temperature is to zero the hotter it is.

- Vortices with negative temperature are smooth.
- Vortices with positive temperature are “balled up”.
- Vortices with infinite temperature are fractal.
- As vortices stretch they cool down.

Vortex Gas Model and Tornadoes

The vortex gas model suggests, that as smooth slender vortices enter the developing tornado they stretch and cool down, supplying kinetic energy to the ambient flow in the tornado, thus heating it up. As the vortices are stretched further they would become fractal and transfer energy to small scales via the Kolmogorov 5/3 cascade. As this process repeats itself many times the ambient tornado vortex would achieves a quasi-equilibrium with its environment.

Suction Vortices[4]



Some tracks left by high-energy vortices within a tornado, are as narrow as 30 cm. Some of these paths appear to originate outside the tornado and intensify as they move into the tornado. We identify these vortices as supercritical in the sense of Fiedler and Rotunno. The work of Fiedler and Rotunno analyzing the work of Barcelon, et. al., Burgraff, and Benjamin, suggests to us that the super-critical vortex below a vortex breakdown has its volume and its length decrease as the the energy of the super-critical vortex increases. This would suggests that the entropy (randomness of the vortex) is decreasing when the energy is increased.

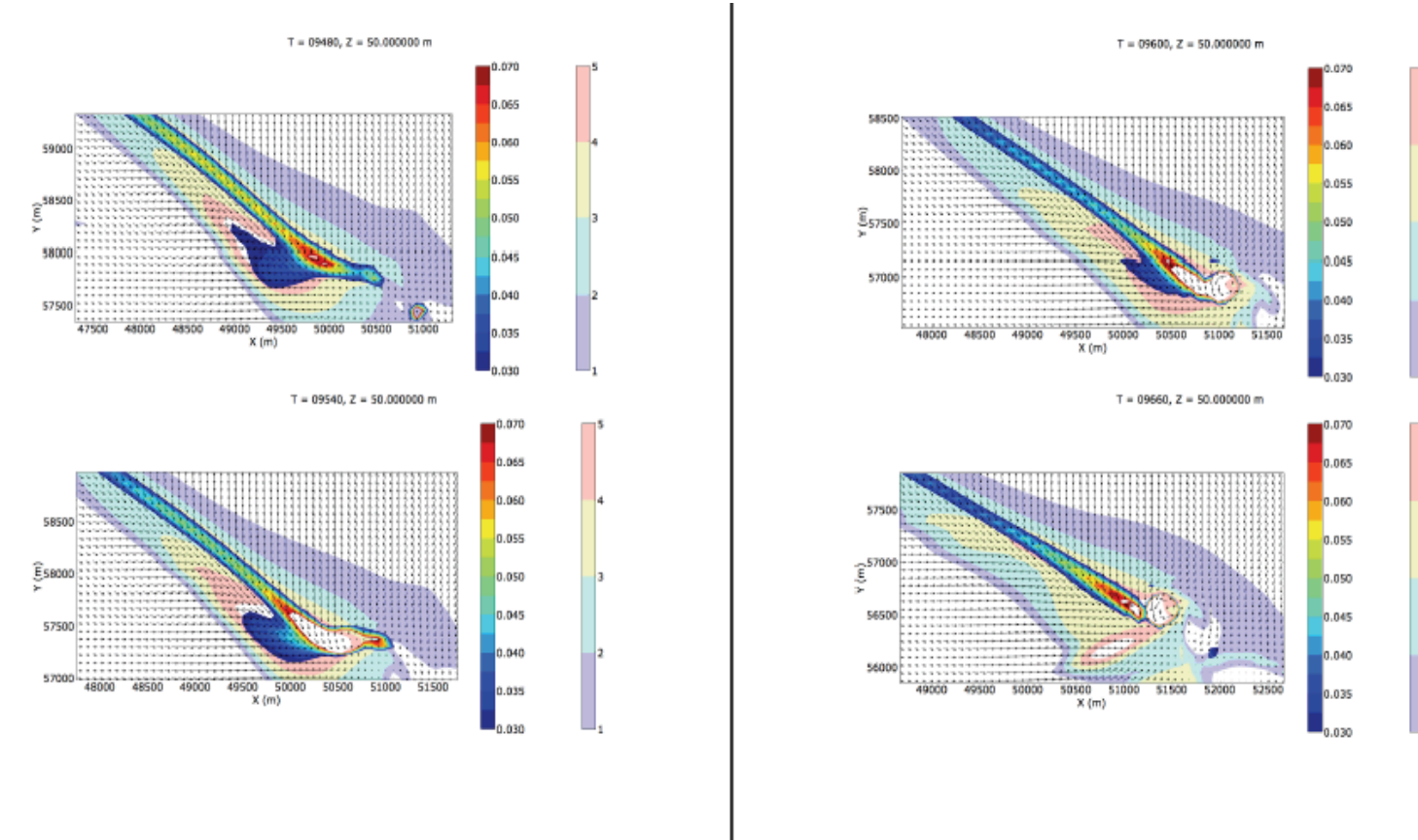
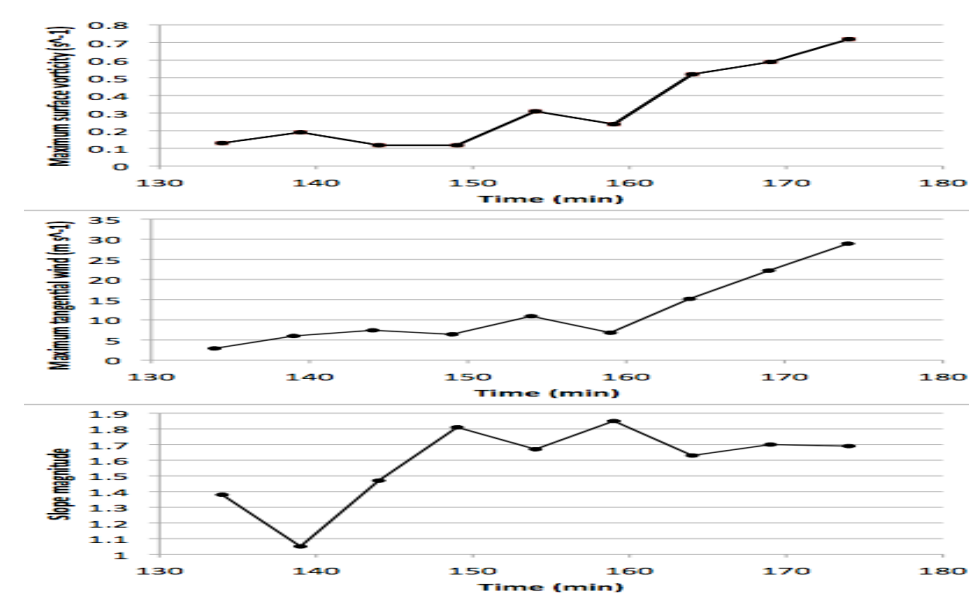
Suction Vortices and Negative Temperature?[4]

The temperature of the vortex is the change in the entropy divided by the change in energy. Hence that the temperature of the vortex is negative. These vortices would be barotropic, however their origin could very well be baroclinic. Recent results suggest vorticity produced baroclinically in the rear-flank downdraft and that then decends to the surface and is tilted into the vertical is linked to tornadogenesis. Once these vortices come in contact with the surface, if the stretching and surface friction related swirl (boundary layer effects) are in the appropriate ratio then by analogy with the work of Fiedler and Rotunno the vortex would have negative temperature and the vortex would now be barotropic.

More Results of [6]

Studies by Wurman and collaborators of mobile Doppler radar data obtained from intercepts of tornadic storms seem to support the vortex gas model method of tornadogenesis and maintenance, with high energy single-cell vortices being produced by shear either inside or outside the vortex. These vortices appear to be associated with transient intense updrafts.

Time series simulations



Numerical model (CM1) at University of OK and NSSL produced results consistent with [2] and [6].

Energy Spectrum and Power Laws of [2, 6]

Results in [6] suggest that subvortices moving in tornadoes have negative temperature and their horizontal cross-sections are fractal. Assuming the cross-sectional dimension of tornadoes and vorticity obey a power law, we can describe the energy spectrum in the form $E(k) \sim k^{-\gamma}$; for $T < 0$ we obtained $\gamma \geq 2$. In the case $T > 0$ we have $\gamma = 0$. The energy loss in the vortex filament as the temperature goes from $T < 0$ to $T > 0$ (vortex cooling down) results in an increase of the kinetic energy in the surrounding flow. Energy evolution in time is governed by $\partial_t E(k) + 2k^2 R^{-1} E(k) = Q(k)$ [3]. For small k the energy increase will be consistent with an increase in γ thus indicating a transfer of energy from smaller to larger scales.

References

- [1] R. Baker and M. J. Shelley, On the connection between thin vortex layers and vortex sheets, *J. Fluid Mech.* **215**, (1990), 161–194.
- [2] H. Cai, Monthly Weather Review **133** (2005), 2535–2551
- [3] A. J. Chorin, Vorticity and Turbulence, Springer, New York (1994)
- [4] T. Fujita, Tornadoes and Downbursts in the Context of Generalized Planetary Scales, *J. Atmos. Sci.* **38**, (1981), 1511–1534.
- [5] P. Markowski, E. Rasmussen, J. Straka, R. Davies-Jones, Y. Richardson, and R. J. Trapp, Vortex Lines within Low-Level Mesocyclones Obtained from Pseudo-Dual-Doppler Radar Observations, *Mon. Wea. Rev.* **136**, (2008), 3513–3535.
- [6] J. Wurman, The Multiple-Vortex Structure of a Tornado, *Weather and Forecasting*, **17**, (2002), 473–505.