



Dabbling in Forensic Meteorology—A Tale of Two Pacific Northwest Tornadoes

Poster Session

Presented by Treena M Jensen

Taholah, Washington - February 21, 1904

Recent Discovery of First Known Fatal Tornado in Washington State

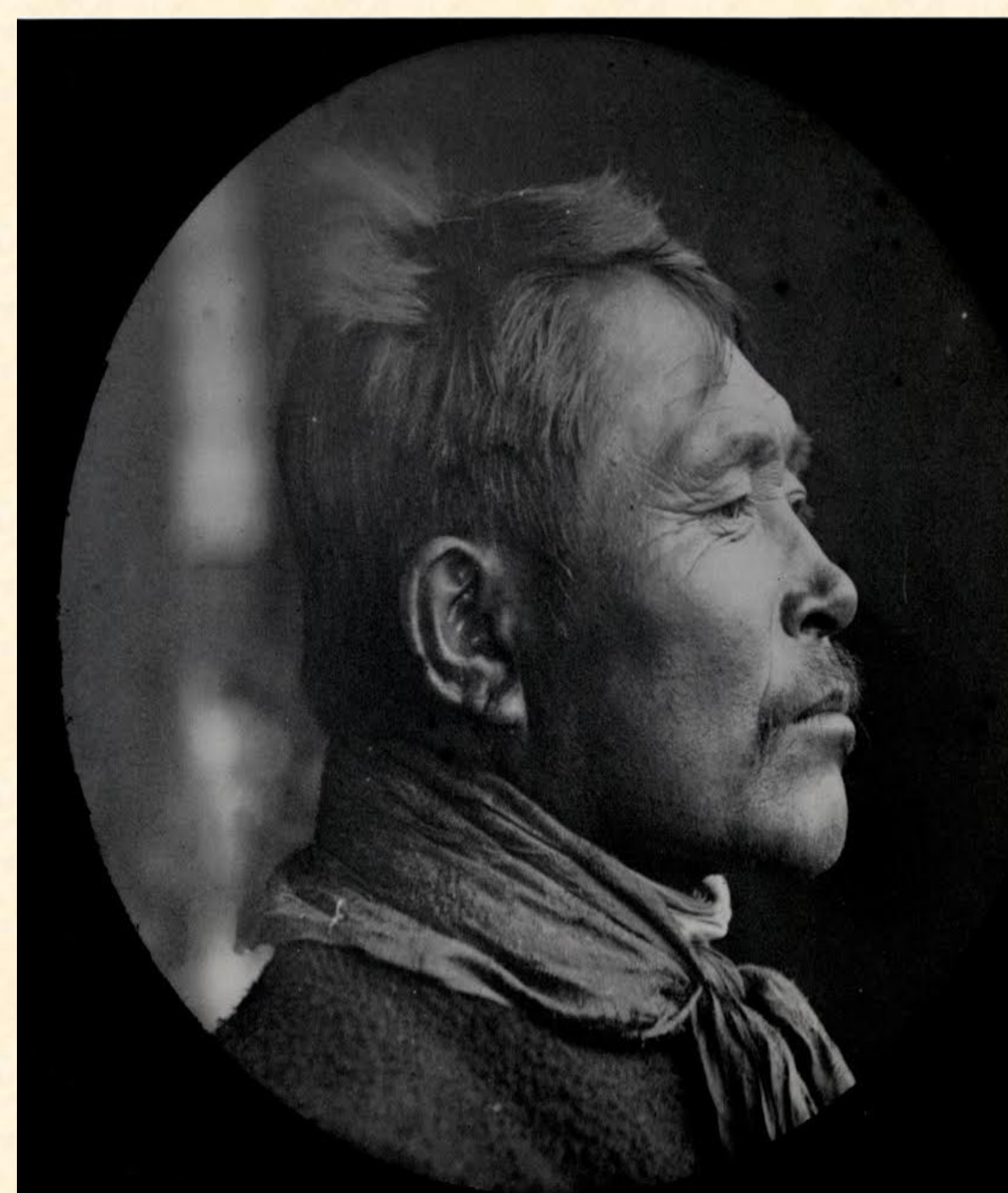
Tragedy Struck the Quinault Agency

Around midnight a tornado moved across the Quinault Indian village presently known as **Taholah**.



1920 Map

The storm resulted in extensive damage to several buildings, including the flattening of the community spiritual gathering place.



Johnny Shale (date unknown)

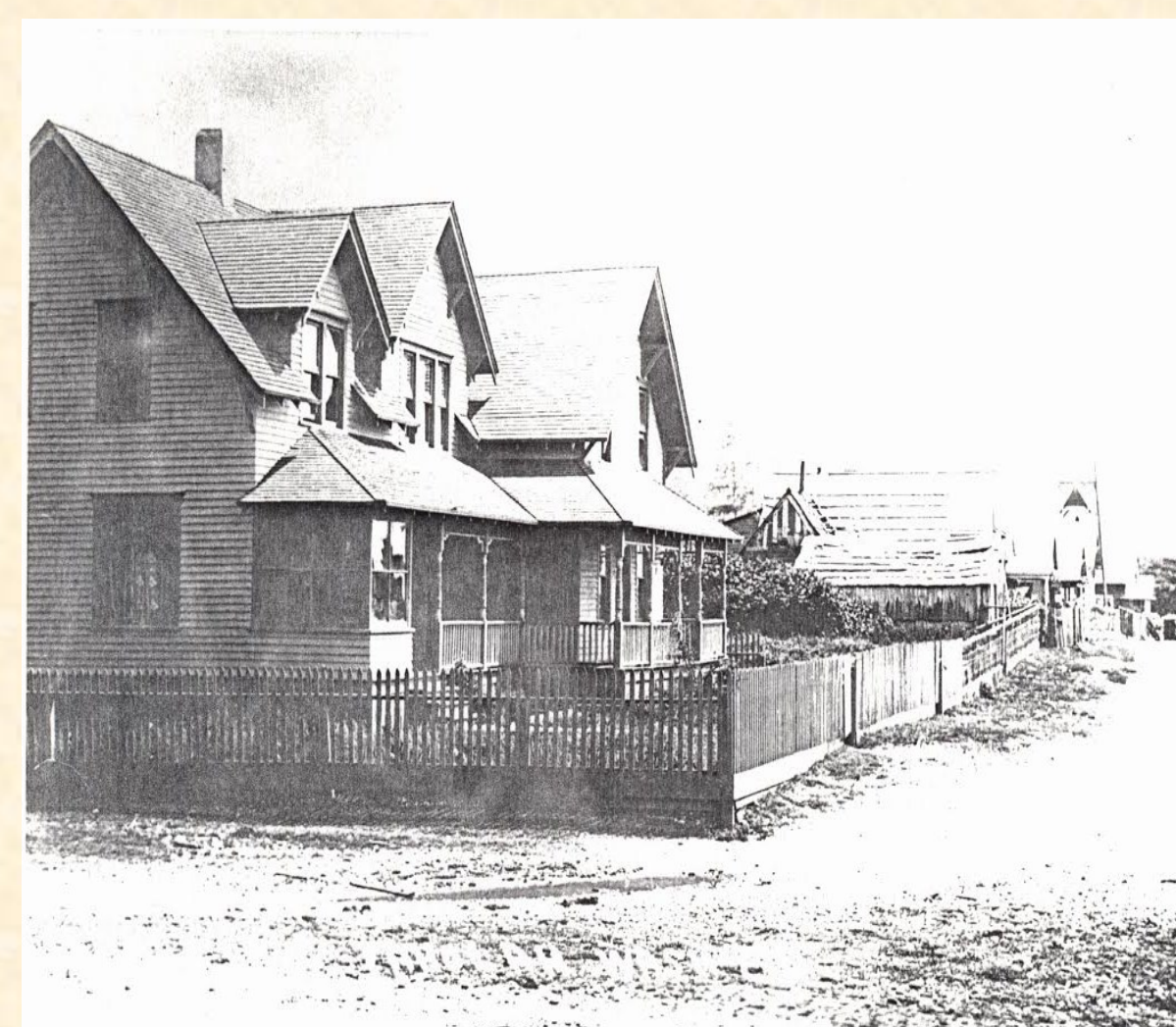
The house of Johnny Shale was moved 50 yards by the storm.

The father of the Shale boys was also severely injured by the tornado.

Tornado Killed Guests of Quinault Hotel

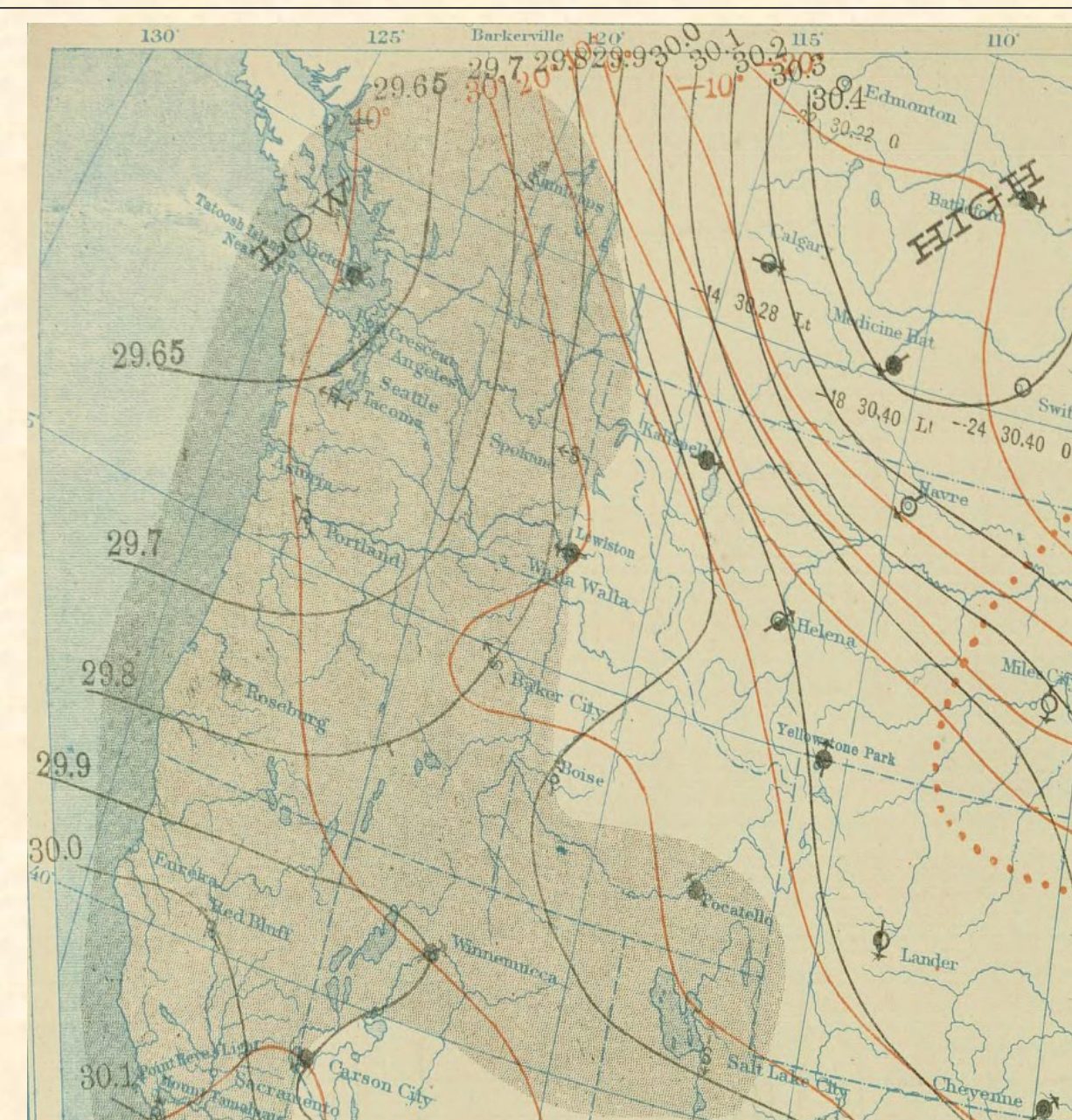
A hotel on the reservation owned by Harry Shale was badly damaged. A newly married couple who was traveling from Hoquiam to their homestead in Clearwater was killed by the tornado. Another guest of the hotel broke his collarbone.

A witness described three nearby houses were blown on top of the hotel, and building debris was liberally scattered amongst the town.

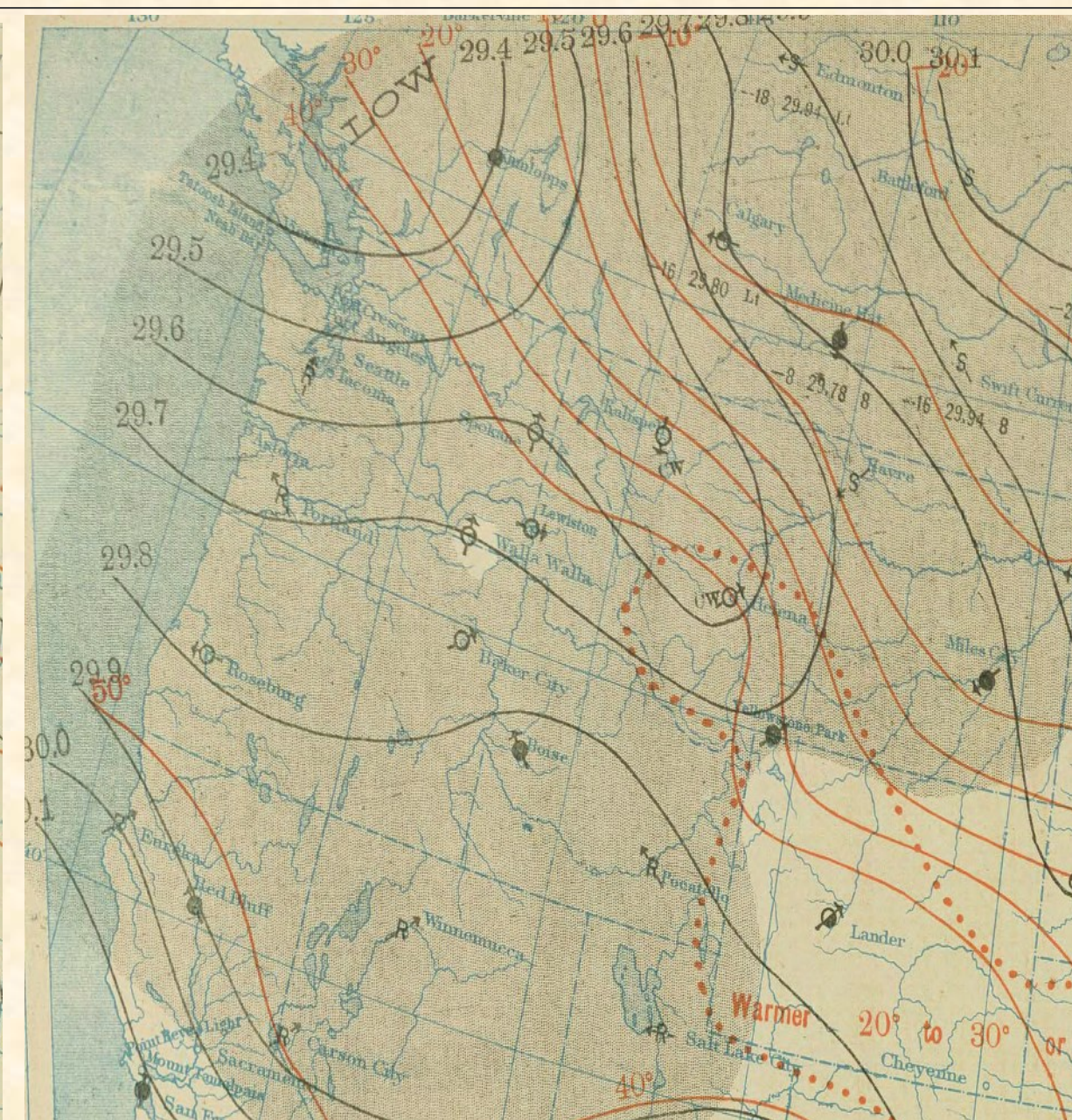


Quinault Hotel before 1904

A 995 mb Low Moved Over NW Washington



8 AM Feb 21, 1904



8 AM Feb 22, 1904

SCIENTIFIC STORYTELLING

Stories are powerful tools to connect people to circumstances, and can be used by Meteorologists to persuade community response to warnings.

Portland, Oregon - February 26, 1904

Destructive Tornado in Portland, Oregon Flattens Starbuck's Home

Tornado Destroys Several Buildings in North Tabor Area

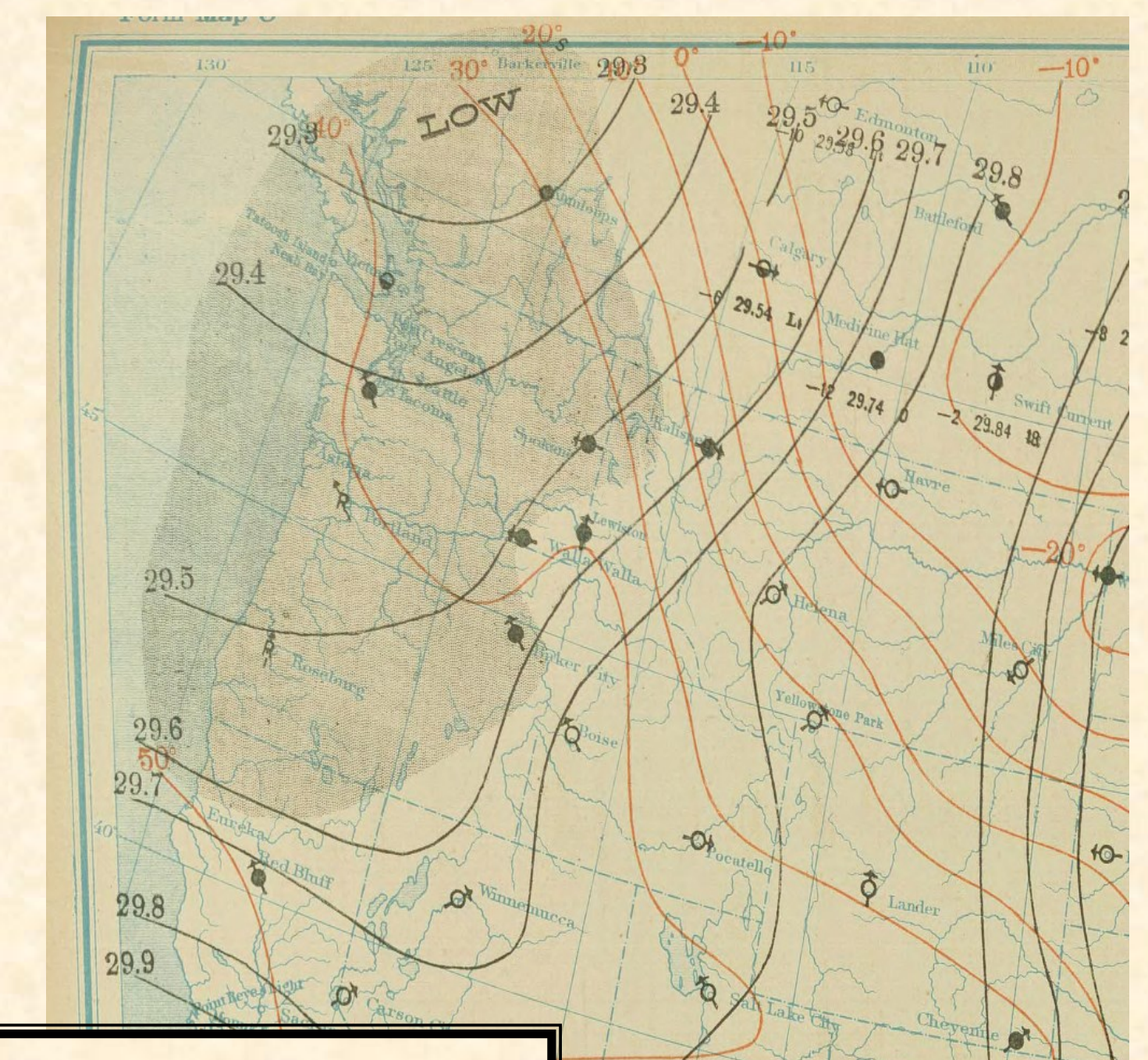


House of William Thomas
Photo by Shogren
The Morning Oregonian



House of T.H. Starbuck
Photo by Shogren
The Morning Oregonian

Another 995 mb Low Impacts the Pacific NW



8 AM Feb 26, 1904

Climate and Crops

“Heavy hail fell just before the wind struck the buildings. It was pure white, oval in shape, and about the size of an ordinary marble....The width of the path of destruction was 200 feet, and its length nearly 10 miles.”

PRESERVING HISTORY

To analyze the changes of tornado frequency and intensity through time, there needs to be a sound tornado climatology.

“Everyday decision making around the world is constantly based on what came before us” - Steve Berry (History Matters)

“So much of our future relies on preserving the past” - Peter Westbrook

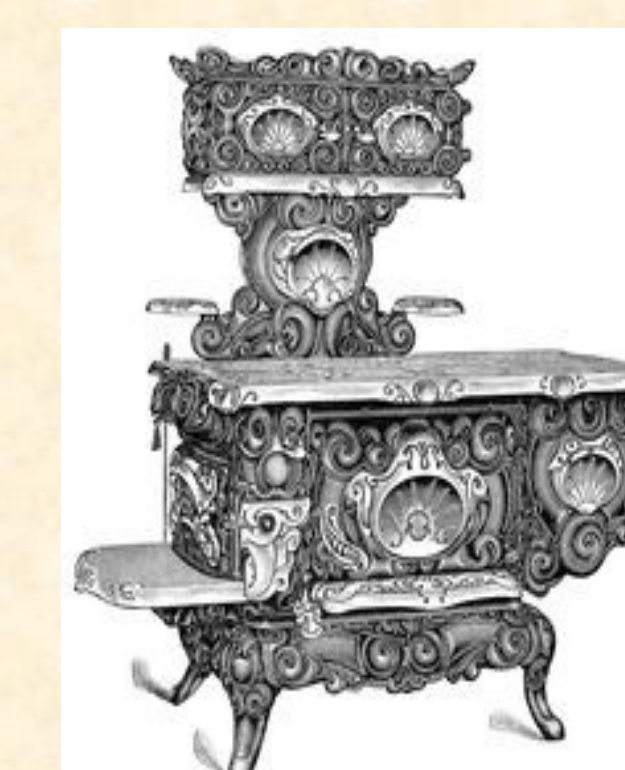
Appliances Save the Starbuck Family From Destructive Tornado

Three members of the Starbucks family were home when the tornado struck there house. The 2nd floor of the house came down onto the first floor where all of the Starbucks family were located.

Miraculously they all survived with only minor injuries.

The kitchen stove blocked

the debris from the ladies, and the bath tub did the same for Mr. Starbuck.



1901 Map of Area Most Impacted by Tornado

