



Livestock and Poultry Environmental Learning Center

P. Knox, M. Risse, G. Hawkins
University of Georgia
Department of Crop and Soil
Sciences

E. Whitefield
Washington State University
Department of Animal Sciences

D. Smith
Texas A & M University
Department of Biological
& Agricultural Engineering

C. Powers
University of Nebraska
Department of Biological
Systems Engineering

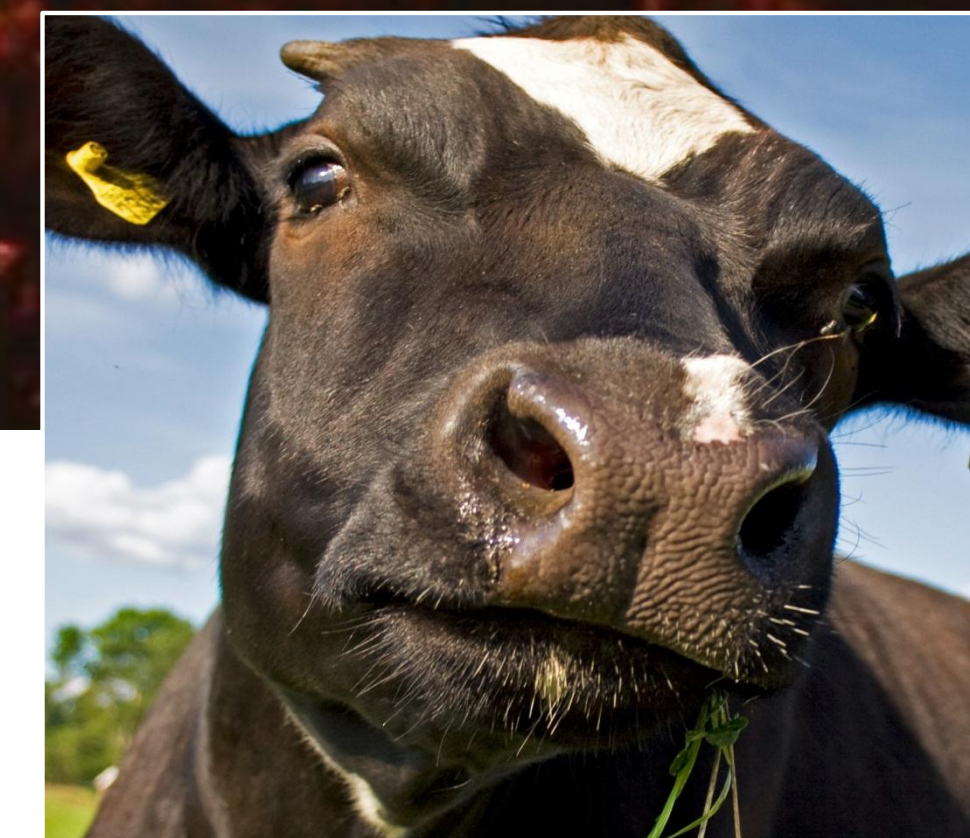
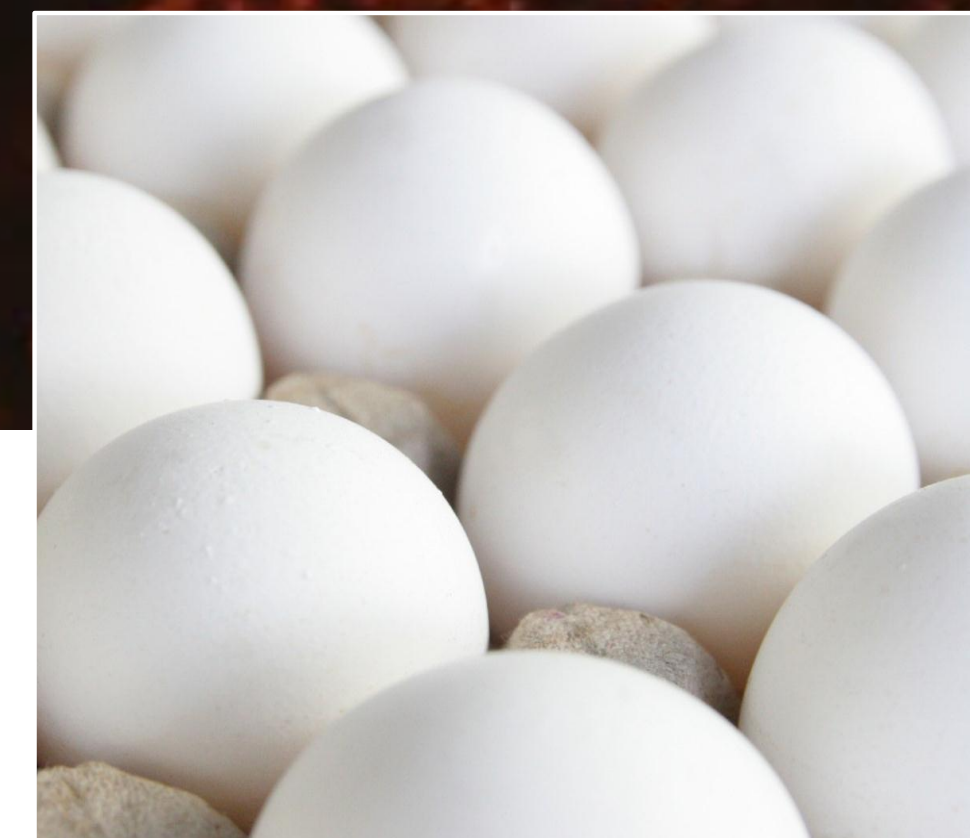
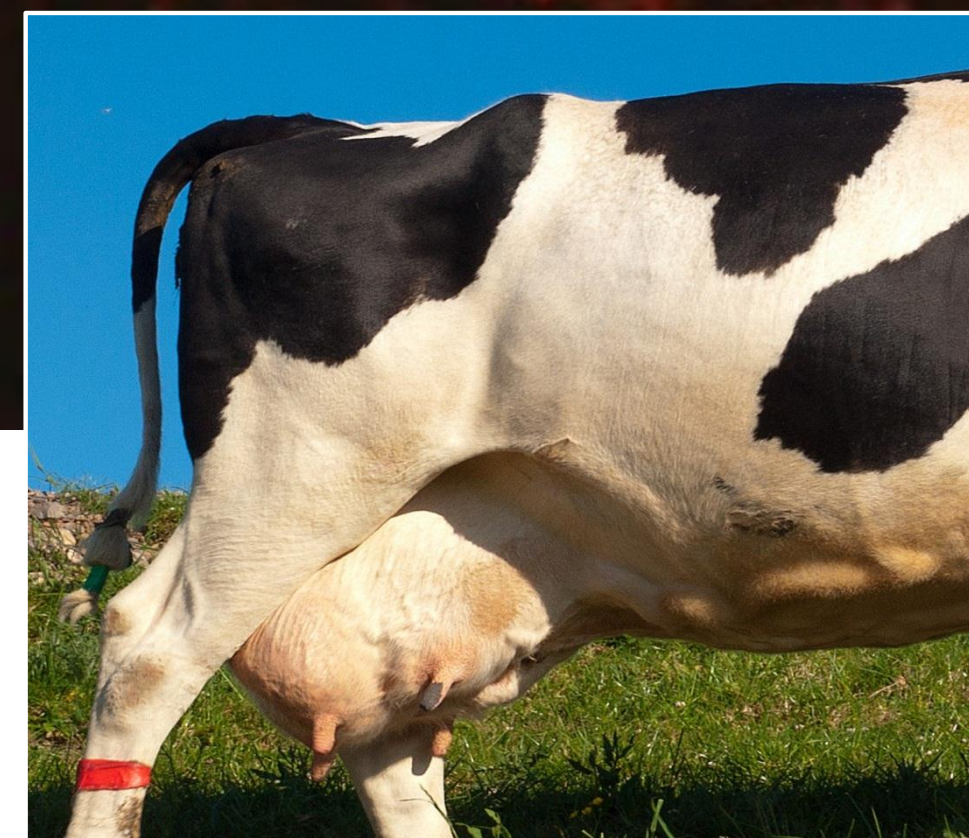
D. Schmidt
University of Minnesota
Dept. of Biological Systems &
Agricultural Engineering

J. Pronto
Cornell University
Dept. of Biological and
Environmental Engineering

Addressing Issues Related to Animal Agriculture and Climate Change Through Extension Programming

Our overall goal is for Extension—working with partner organizations—to effectively inform and influence livestock and poultry producers and consumers of animal products in all regions of the U.S. to foster production practices that are environmentally sound, climatically compatible, and economically viable.

A primary desired outcome is that stakeholder decisions result in reduced greenhouse gas emissions without sacrificing America's capacity to produce meat, milk, eggs and other animal products.



Get the free mobile app at
<http://gettag.mobi>



PROJECT OBJECTIVES

- 1 Equip extension personnel and stakeholder representatives to assess stakeholder needs relative to climate change mitigation and adaptation and to deliver educational programs that target those needs.
- 2 Provide on-demand web access to science-based information, educational resources, and decision support tools to stakeholder groups and the public on climate change related to animal agriculture.
- 3 Coordinate efforts so information and resources are provided at regional and national levels.

UNIQUE PROJECT FEATURES

- ★ Regional teams will address systems and needs of their designated area.
- ★ National coordination facilitates sharing of information, expertise, and resources.
- ★ Coordinate project education and outreach activities through the successful framework of the Livestock and Poultry Environmental Learning Center's (LPELC) established web presence.
- ★ A national online course will be developed for extension educators, technical service providers and other agriculture professionals seeking to understand the relationship between animal agriculture and climate change. This engaging course will teach professionals to deal with this issue.

EXTENSION FOCUSED **CAPACITY BUILDING** PROJECT

Six national cooperating Universities were granted \$4.1 million over five years (2011–2016).

AREAS OF INTEREST

- Demonstrating 'continuous improvement' and a high level of environmental stewardship.
- Producing meat, milk, eggs, and other products using even fewer natural resources (primarily feed and fuel).
- Conserving and utilizing nutrients in manure more effectively as well as reducing fertilizer costs.
- Managing animals during heat waves and extreme weather events.
- Adapting farming systems to a changing climate.



United States
Department of
Agriculture

National Institute
of Food
and Agriculture

This project was supported by USDA Agricultural and Food Research Initiative Competitive Grant No. 2011-67003-30206 from the USDA National Institute of Food and Agriculture. To learn more about this project, please contact: Pam Knox, pknox@uga.edu, 706-542-6067 or visit www.animalagclimatechange.org.

