

UNIVERSITY OF HOUSTON DOWNTOWN (UHD)

- MINORITY – SERVING
- MULTICULTURAL
- LOCATED IN THE HEART OF
DOWNTOWN, HOUSTON, TEXAS
- STUDENTS OF ALL AGE
BRACKET
- MOST WORKING CLASS
PROFESSIONAL STUDENTS ENROL
IN UHD'S ONLINE COURSES



INSTRUCTIONAL METHODOLOGY

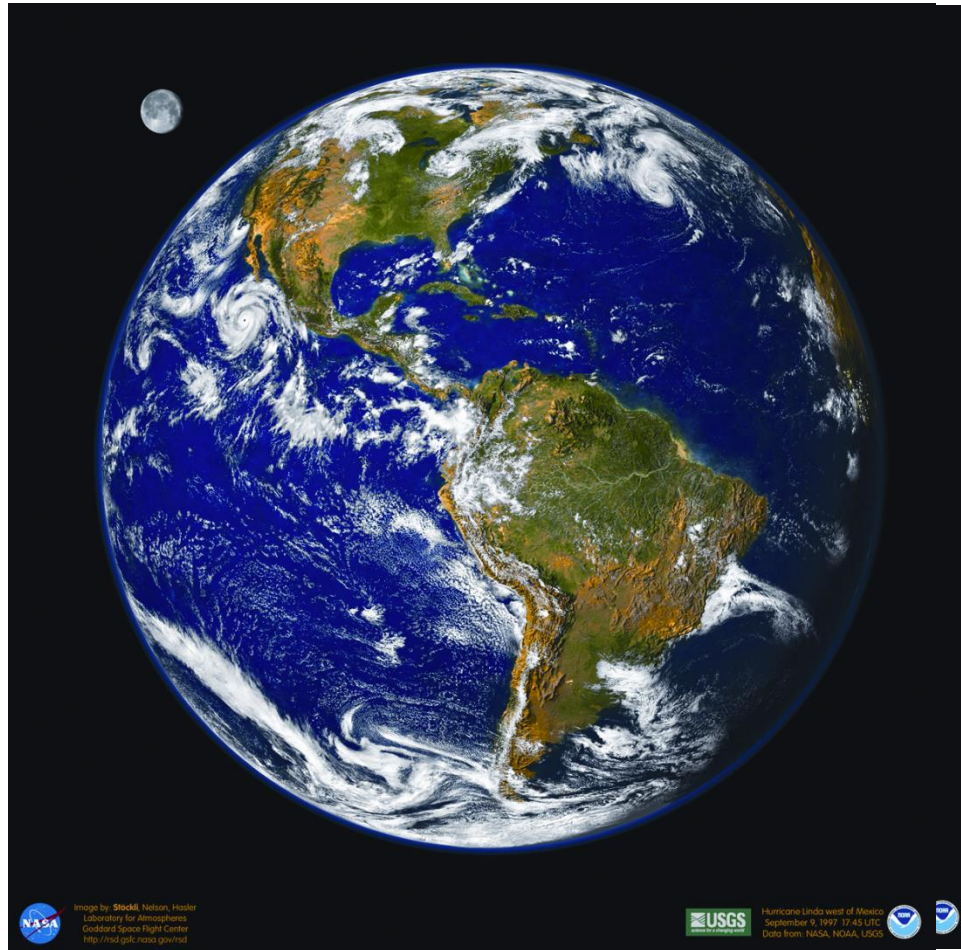
TYPES:

- ❑ INTEGRATED LECTURE/LAB
- ❑ PROJECT-BASED SCIENCE
- ❑ LEARNER-CENTERED
- ❑ SELF-INQUIRY APPROACH
- ❑ ENGAGING/CRITICAL THINKING
- ❑ COLLABORATIVE
- ❑ VISUALIZATION

TOOLS:

- ❑ BLACKBOARD/AMS WEB SITE
- ❑ BASED ON PREVIOUS UNDERSTANDING/EXPERIENCE
- ❑ HANDS-ON EXERCISES/QUIZZES; AND LAB INVESTIGATIONS
- ❑ POWERPOINTS & ANIMATIONS

Earth as a System



This view of Planet Earth shows all the major subsystems of the Earth system.

Sea Floor Spreading and Plate Boundaries

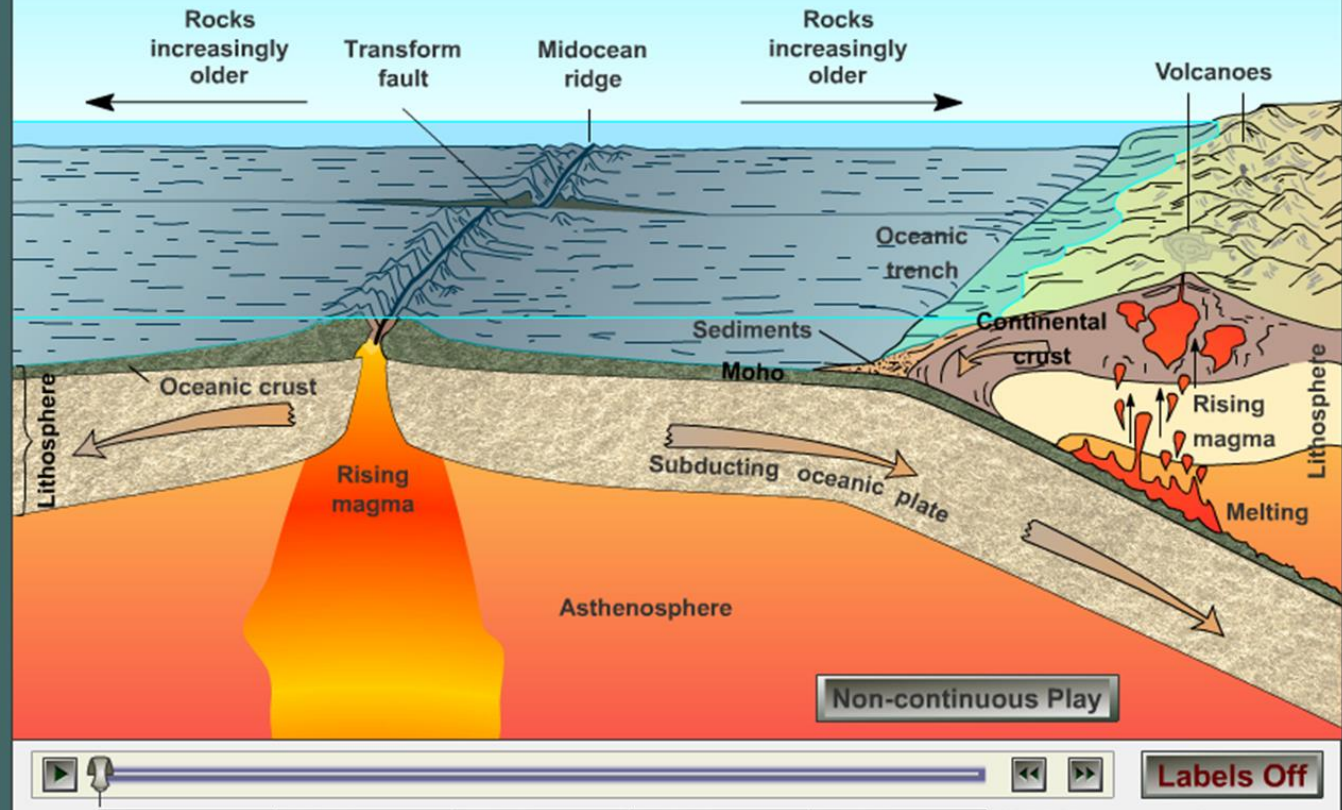
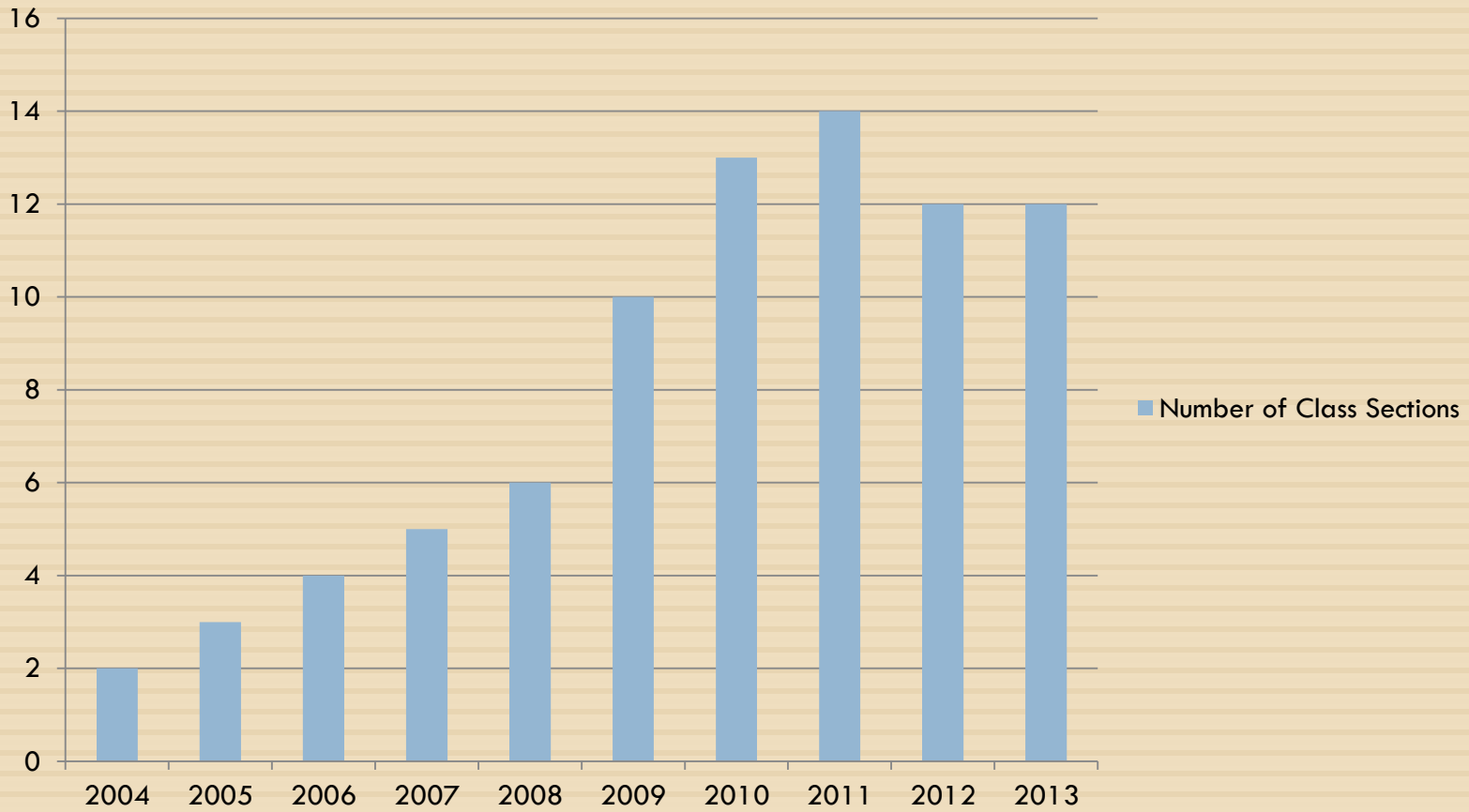


PLATE TECTONICS UNIFYING THEORY

A SCHEMATIC DIAGRAM ILLUSTRATING ENERGY FLOW RELATIONSHIP BETWEEN THE EARTH – ATMOSPHERE SUBSYSTEMS: ATMOSPHERE; HYDROSPHERE, LITHOSPHERE; AND BIOSPHERE

Number of Class Sections



Number of Students Enrolled by Year

