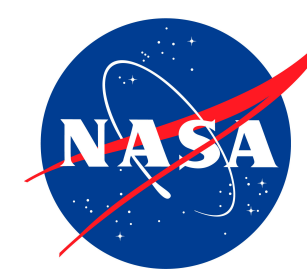


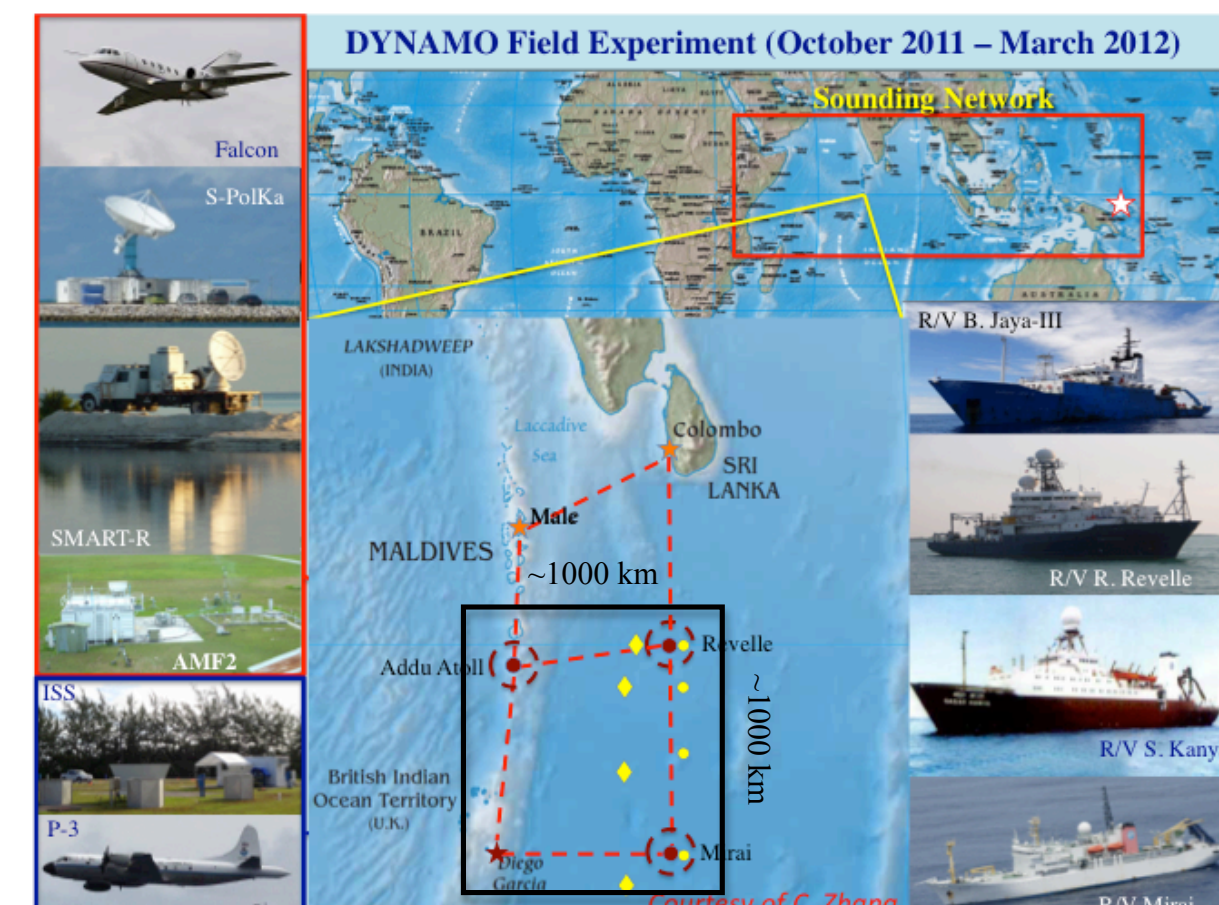
# A high-resolution merged wind dataset for DYNAMO: Progress and future plans

Timothy J. Lang, John Mecikalski, Xuanli Li, Themis Chronis, Tyler Castillo, Kacie Hoover, Alan Brewer, James Churnside, Brandi McCarty, Paul Hein, Steve Rutledge, Brenda Dolan, Alyssa Matthews, Elizabeth Thompson

AMS 95<sup>th</sup> Annual Meeting (3MJOSYMP)  
Poster 427



## 1. Introduction



One of the most distinctive signals of the Madden-Julian Oscillation (MJO) is the upscale development and organization of convection in the Indian Ocean. Dynamics of the MJO (DYNAMO) campaign occurred in late 2011 – early 2012 to investigate this genesis stage. One of the best non-satellite wind datasets ever obtained over the ocean.

The Cyclone Global Navigation Satellite System (CYGNSS) mission can exploit this dataset to better understand the performance of the satellite constellation in regions of deep convection, in particular for characterizing the MJO.

### Main Scientific Objectives

1. Produce a high-resolution surface wind dataset for multiple MJO onsets using WRF-assimilated winds and other data from DYNAMO.
2. Use the DYNAMO datasets, along with available scatterometer observations, to study the causes and impacts of wind variability at spatial and temporal scales finer than those planned to be provided by CYGNSS, and the implications of these processes for CYGNSS observations.
3. These wind maps will be ingested into the CYGNSS End-to-End Simulator (E2ES) to produce simulated CYGNSS observations for DYNAMO. This will provide an excellent core dataset for understanding how CYGNSS can improve our understanding of convective inflow/outflow structures, wind/precipitation feedbacks, and the initiation and development of the MJO.

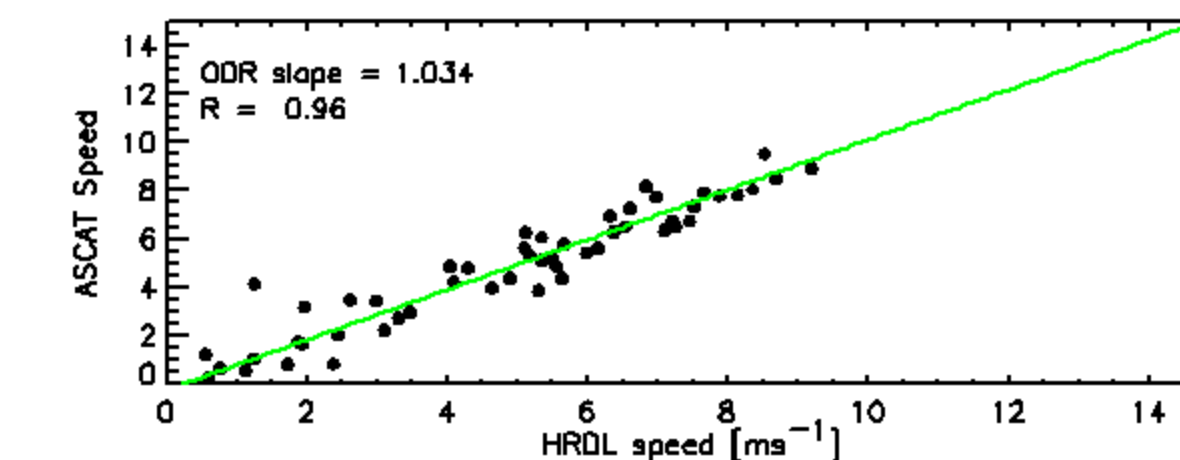
## 3. HRDL/Scatterometer Comparison

### NOAA High-Resolution Doppler Lidar (HRDL)

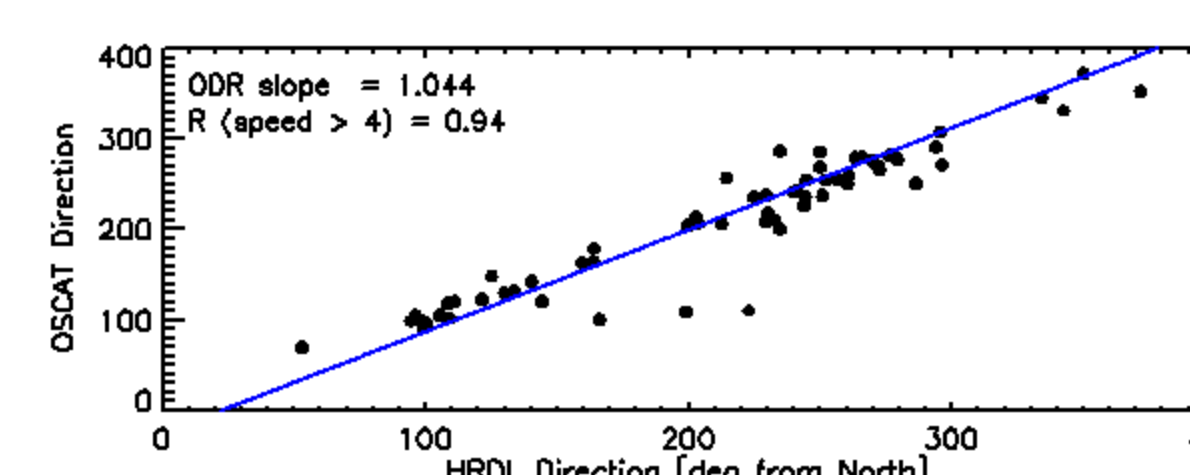
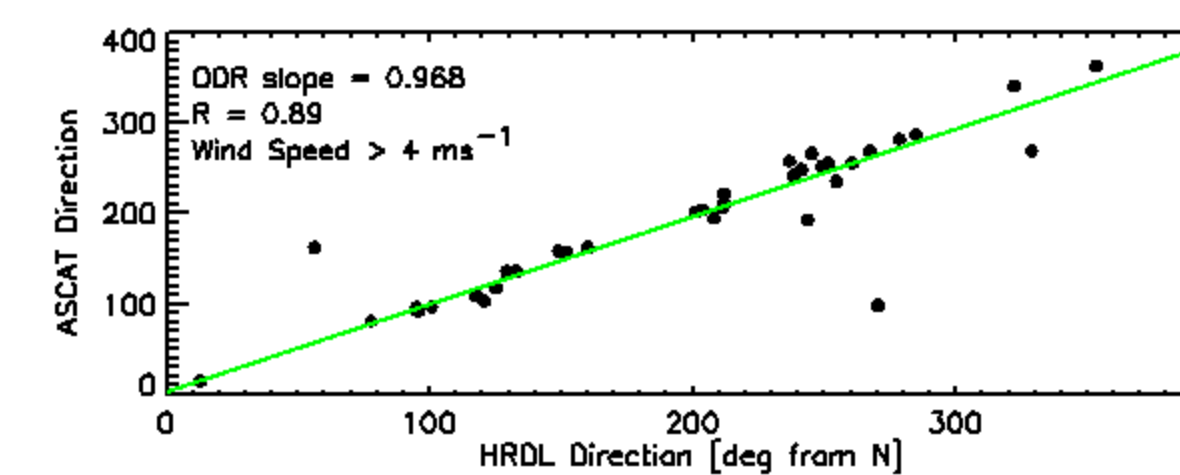
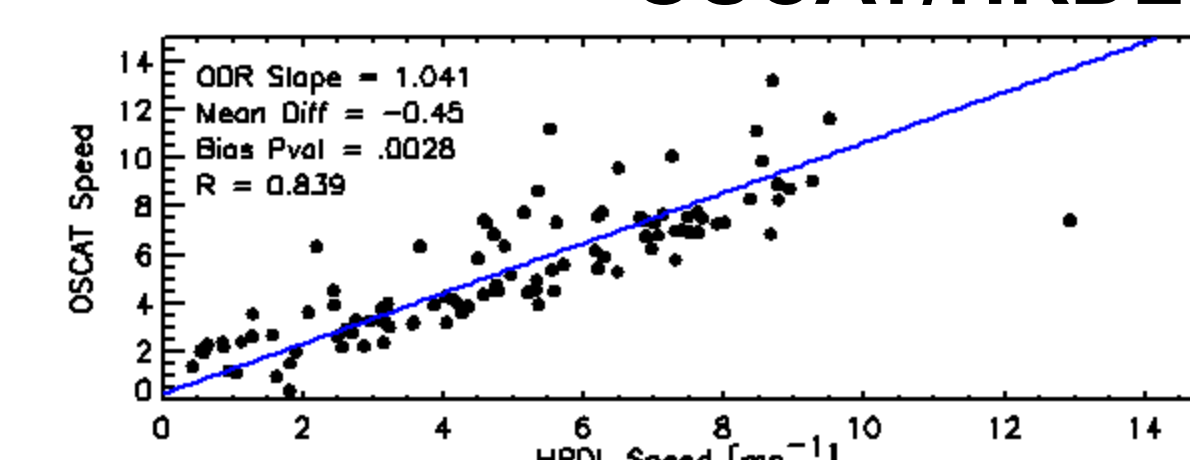
- On Revelle for Cruises 1-3 (1 September - 6 December 2011)
- HRDL scanning ability provided 20-min averaged vertical profiles of wind speed and direction from 12.5 m to ~2000 m
- 12.5-m gate used to compare HRDL to scatterometers (OSCAT and ASCAT)
- Examine relationship between winds and mean square slope as Richardson number varies

$$Ri = \frac{g(T_a - T_w)z}{T_w U^2}$$

### ASCAT/HRDL



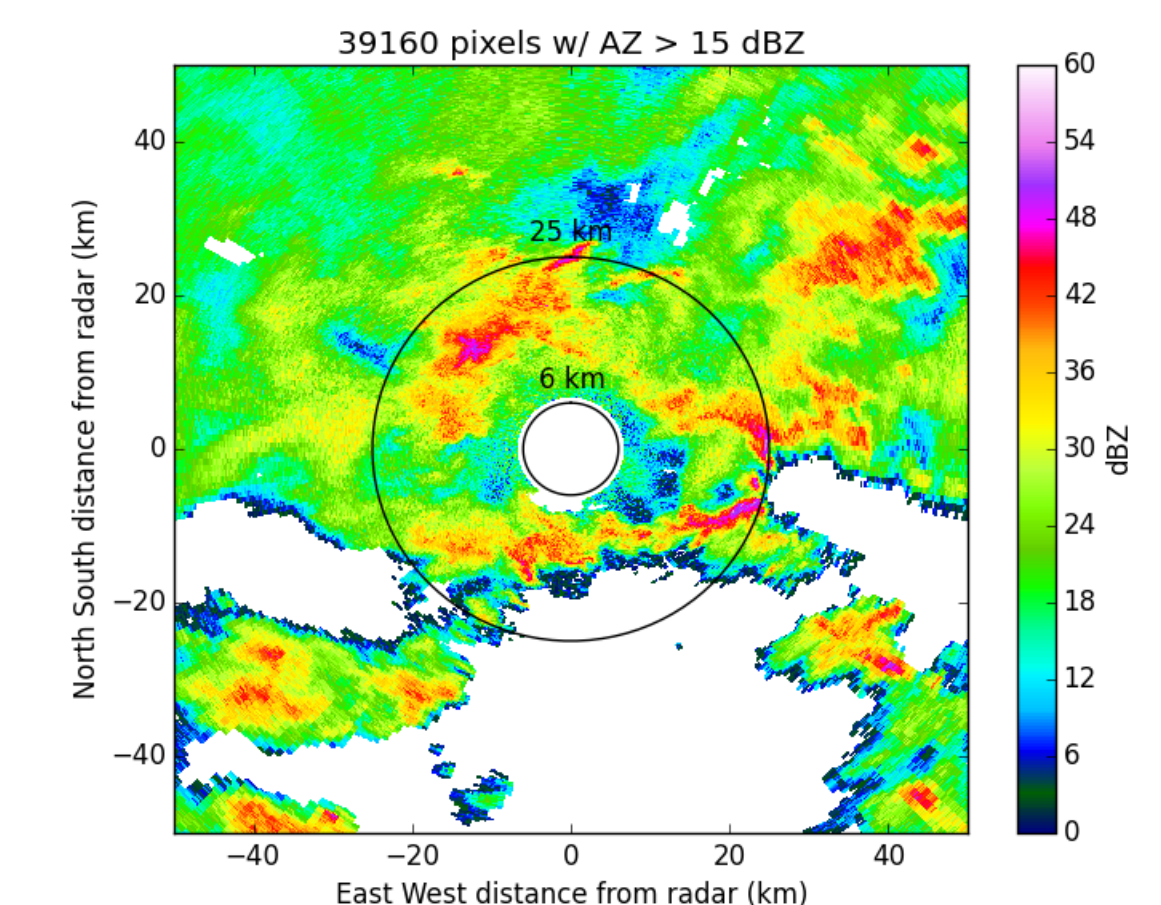
### OSCAT/HRDL



### Preliminary Results

- Richardson number always negative for DYNAMO (unstable)
- ASCAT matches HRDL better than OSCAT

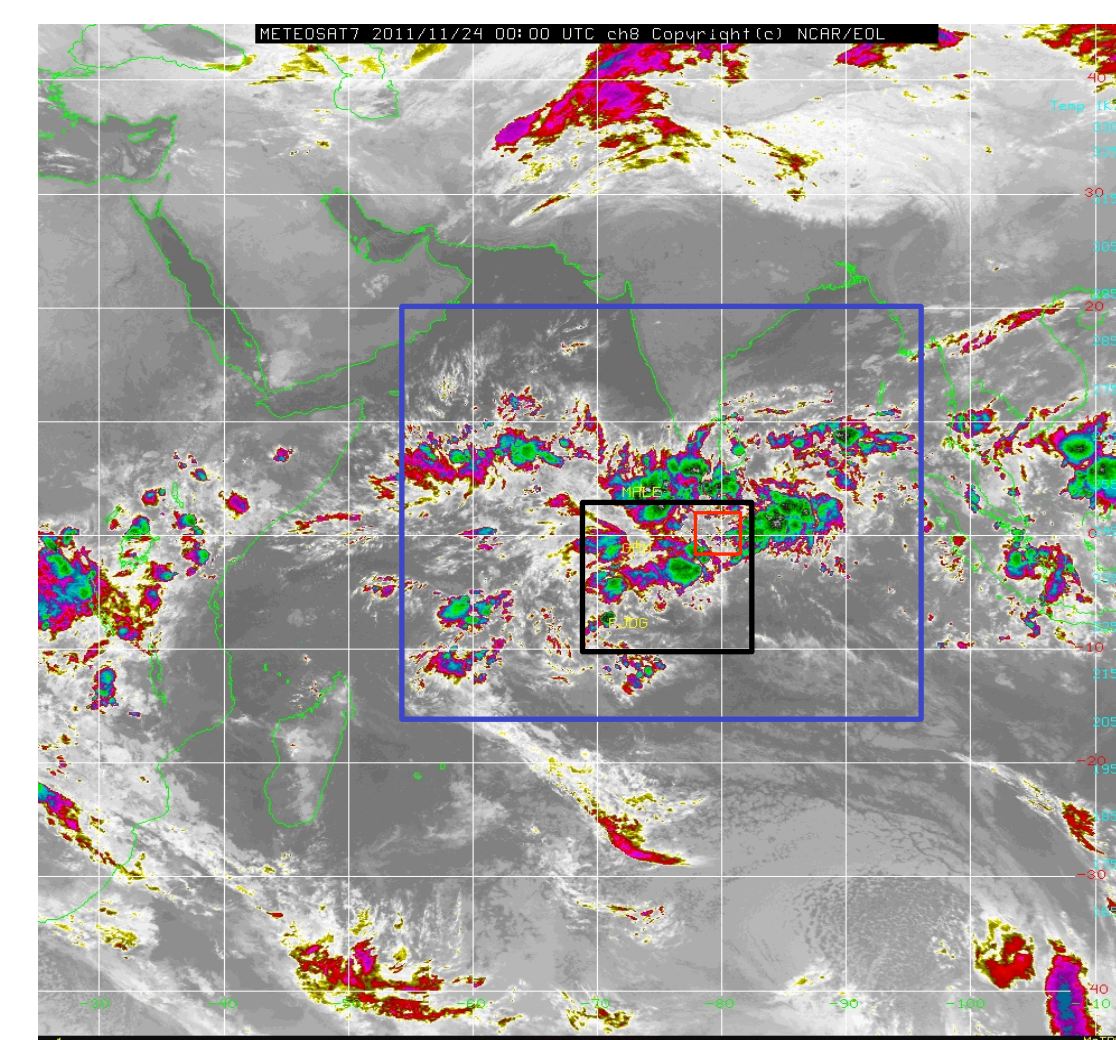
- TOGA radar suggests precipitation a factor in many poor HRDL/OSCAT matches
- Example (11/27, ~1800 UTC): OSCAT = 13.2 m/s, HRDL = 8.7 m/s



## 4. WRF Model Assimilation

### WRF Model Setup

- Advanced Research WRF
- A: 9-km resolution Indian Ocean domain
- B: 3-km DYNAMO quadrilateral domain
- C: 1-km high-resolution domain focused on Revelle
- 40 sigma levels (more levels in lower troposphere)
- Nested 9-3-1 km runs, plus separate 3- and 1-km runs
- Background runs successfully resolve mesoscale features for MJO events
- Focus on late October, late November, late December 2011 MJO onsets

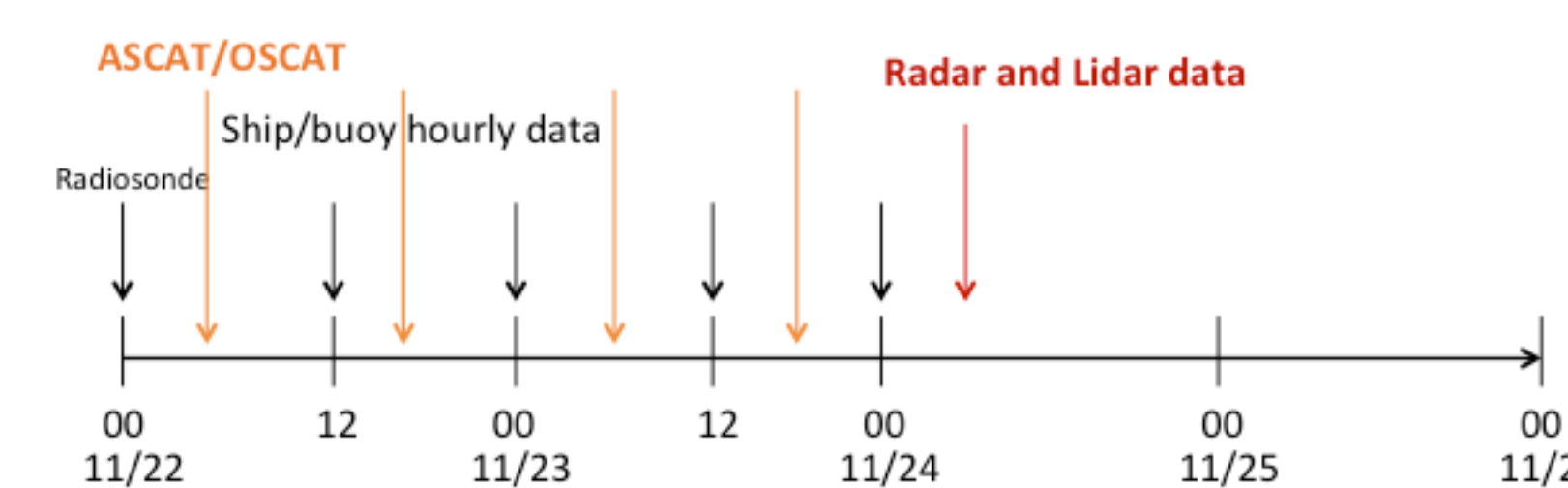


### WRF 3DVAR Progress

- Finalizing WRF runs for B/R matrices generation
- Assimilation tests underway

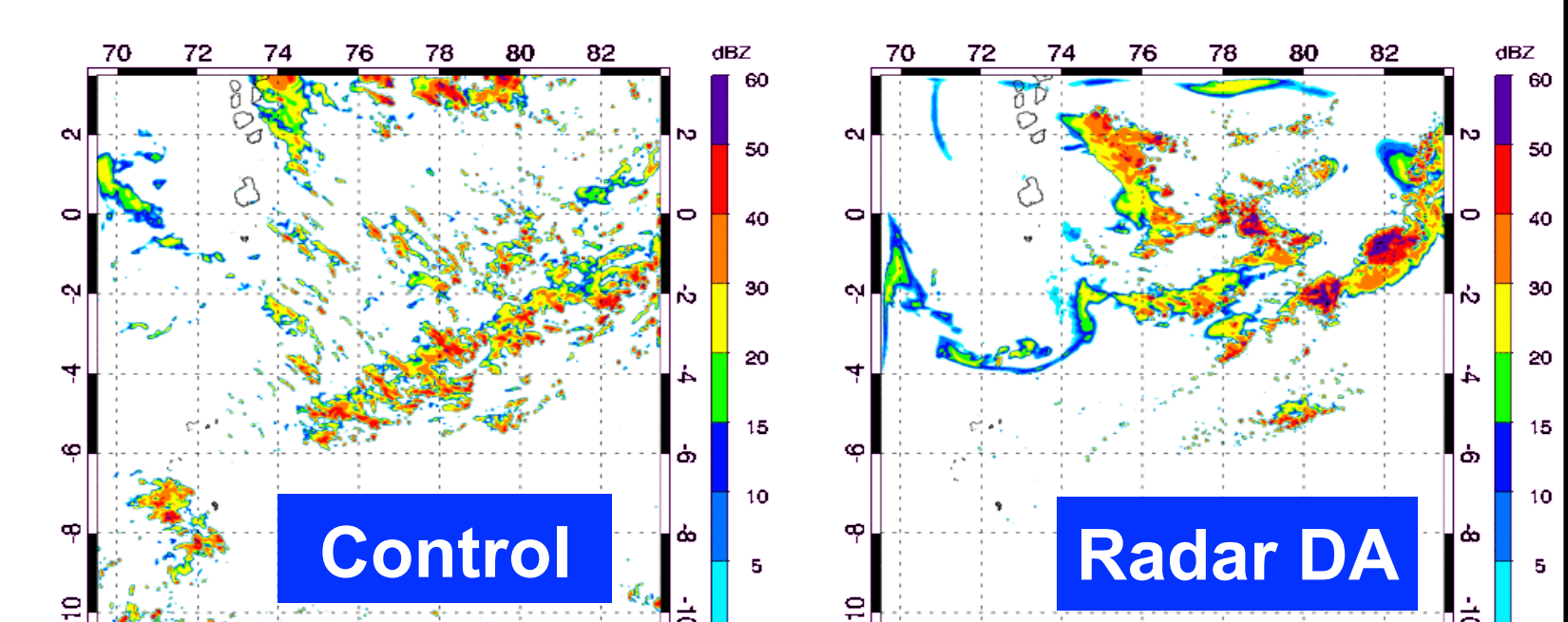
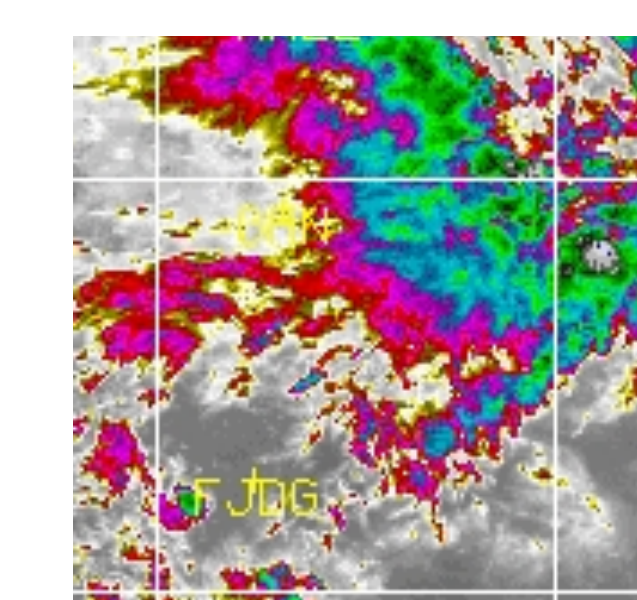
### Assimilation Datasets

- Radars - TOGA, Mirai, S-PolKa
- Soundings
- Surface, Ship, and Buoy observations
- ASCAT/OSCAT

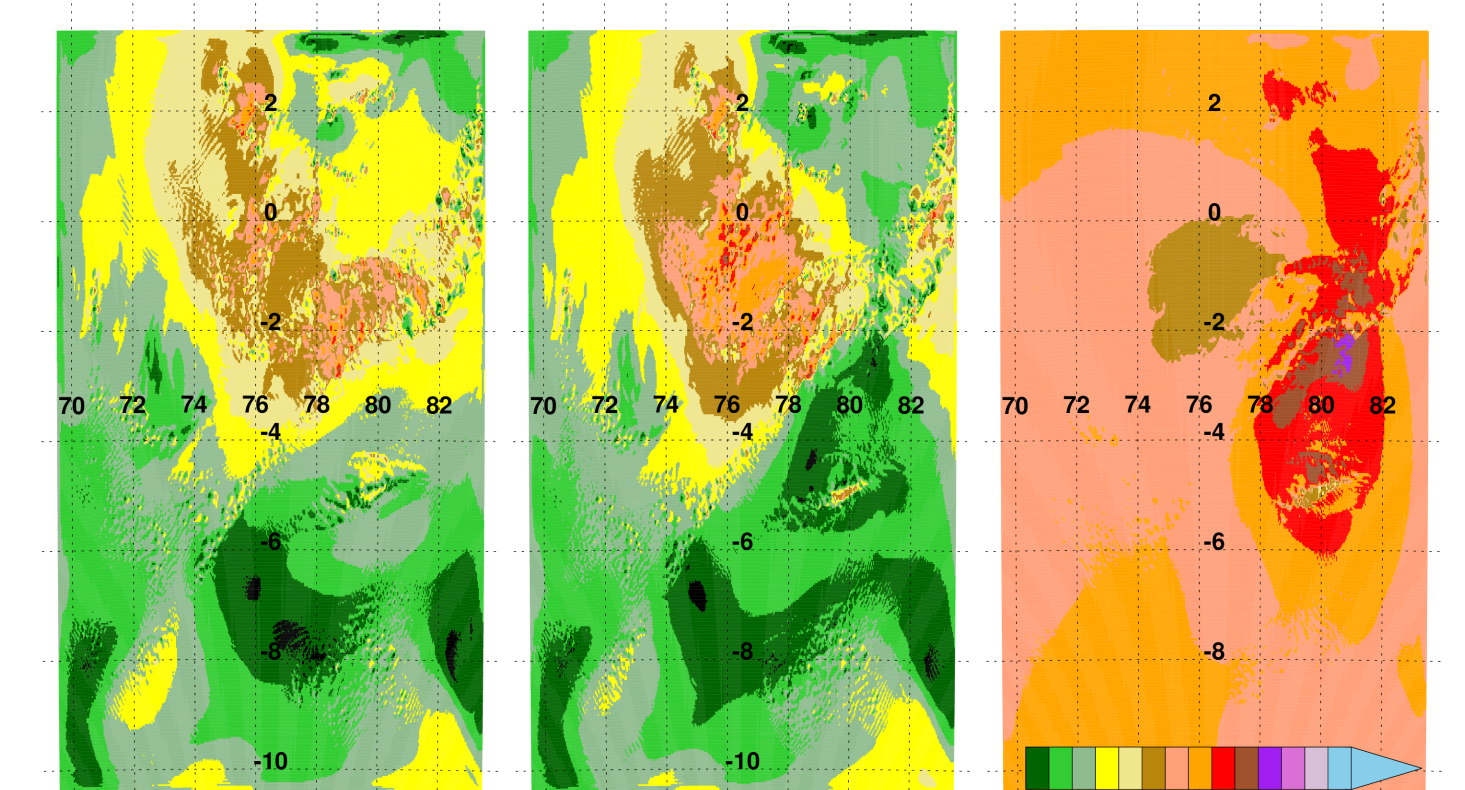


### Preliminary Radar Data Assimilation Results

2011-11-24 0800 UTC



- Preliminary results suggest large impacts from assimilating just TOGA data
- Improvements in precip system structure seen

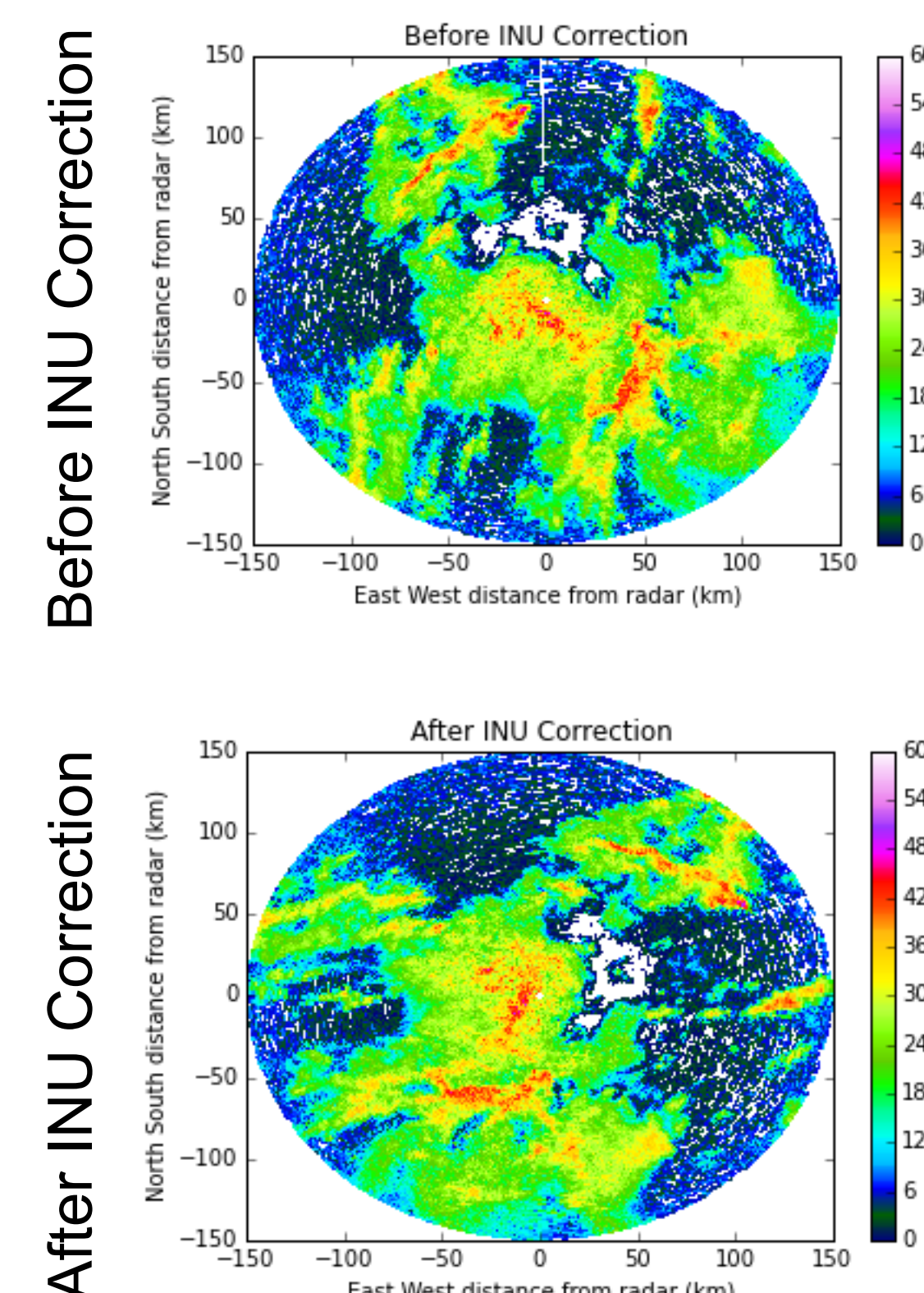
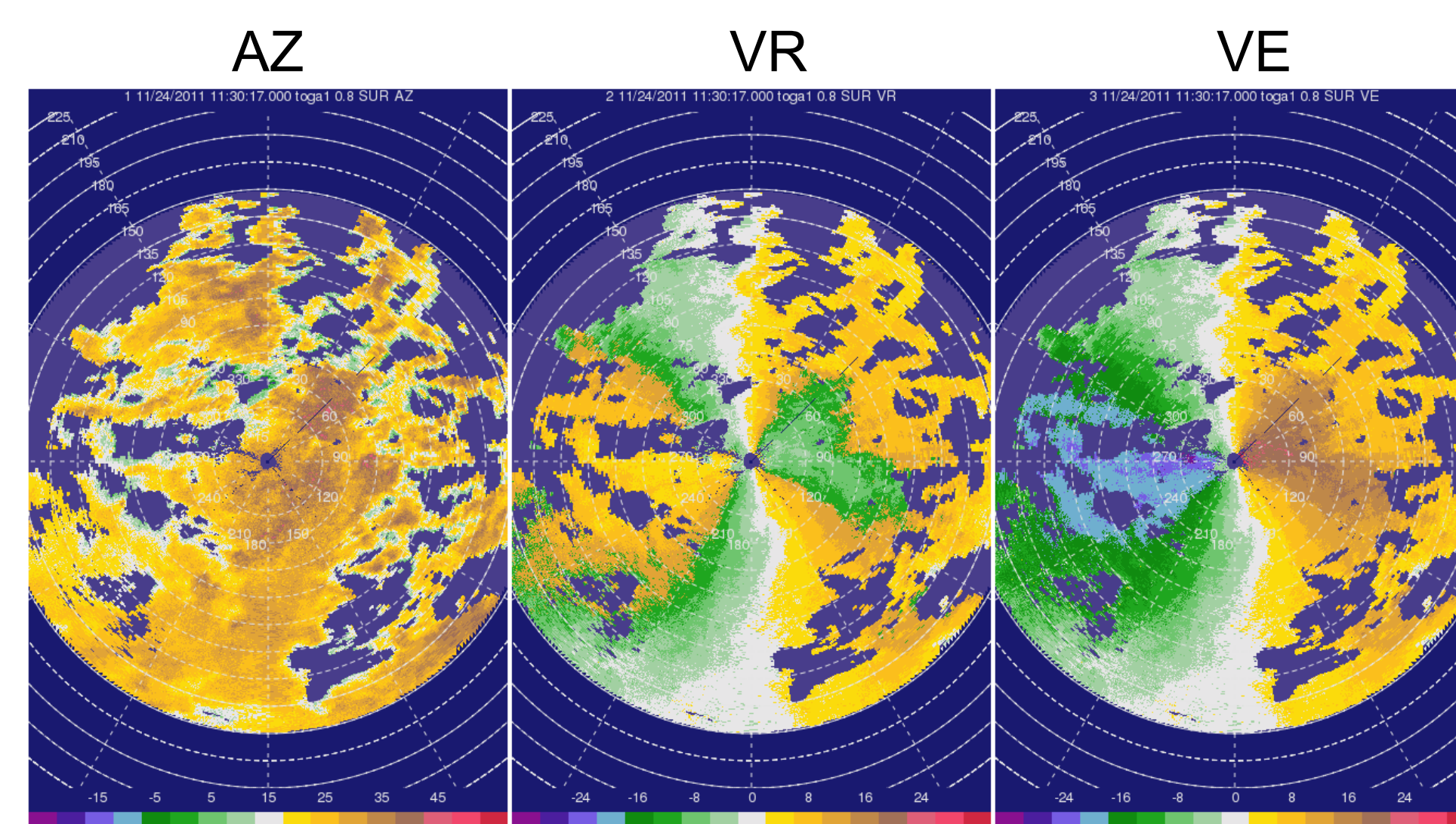


## 2. TOGA Radar Data Quality Control

### DYNAMO Radars

NASA TOGA (Revelle)  
Mirai C-band  
NCAR S-PolKa (Gan)

Worked with CSU to de-alias the TOGA velocities, and also fix occasional azimuthal errors. Used Py-ART software package for both, with hand editing of velocities as needed.



## 5. Summary

- DYNAMO dataset prepped for assimilation into WRF.
- HRDL/scatterometer comparison suggests good overall performance, with ASCAT (C-band) better than OSCAT (Ku-band).
- WRF domains established and preparatory 3DVAR assimilation matrices nearly finalized.
- Initial assimilation testing suggests realistic background runs receive large impacts from radar data.

## 6. Next Steps

- Finalize assimilation plans through more testing.
- Produce merged wind maps during each DYNAMO-observed MJO onset, at ~0.5-1 h time steps, and provide to MJO community. Wind maps will be produced for a few days per onset at first, then we will add more days as needed.
- Ingest wind maps into CYGNSS E2ES. Study potential impact of CYGNSS for studying MJO processes at multiple scales.
- More detailed analysis of HRDL/scatterometer dataset. Examine wind speed-MSS relationship for positive Richardson number scenarios.

Contact Info: Timothy Lang, NASA MSFC (ZP11), Huntsville, AL 35894; (256) 961-7861, timothy.j.lang@nasa.gov  
Funding for this research has come from NASA (NNH13ZDA001N-WEATHER)  
Acknowledgements: DOE Py-ART Software Team, especially S. Collis and J.J. Helmus  
EUMETSAT and NASA JPL for the scatterometer data