



# WILL THE REAL LOS ANGELES STAND UP, PART 2: IMPACTS OF A WEATHER STATION'S RELOCATION ON CLIMATIC RECORDS (AND RECORD WEATHER)



William C. Patzert<sup>1\*</sup>, Steve LaDochy<sup>2</sup>, Pedro Ramirez<sup>2</sup> and Josh K. Willis<sup>1</sup>

<sup>1</sup>Jet Propulsion Laboratory, NASA, Pasadena, CA <sup>2</sup>California State University, Los Angeles, CA

In August, 1999, the National Weather Service (NWS) moved the official downtown Civic Center weather station to the University of Southern California (USC) campus, a 3.78 miles (almost 6 km) distance to the southwest of its previous location near city center at the Department of Water & Power (DWP).

By comparing weather records between the new USC station and the old DWP site, we evaluate the impact of the relocation. Here we present updated, longer records.

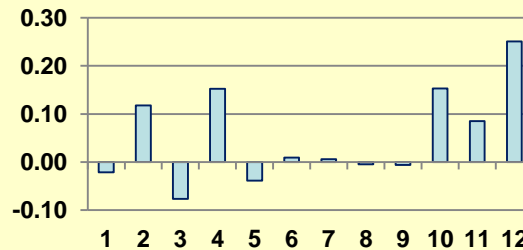
**Table 2. Average Precipitation (in.) for DWP, USC for the Water Year (July1-June30) 1999-2014.**

	DWP	USC		DWP	USC
1999	12.01	11.57	2008	9.32	9.08
2000	17.64	17.94	2009	15.99	16.36
2001	5.49	4.92	2010	22.90	20.20
2002	19.71	16.49	2011	9.27	8.69
2003	10.33	9.35	2012	6.96	5.85
2004	<b>38.32</b>	<b>37.96</b>	2013	3.27	6.08
2005	14.52	13.16			
2006	<b>3.13</b>	<b>3.21</b>	AVG	13.49	12.96
2007	13.42	13.53	DWP-USC	<b>+0.53</b>	

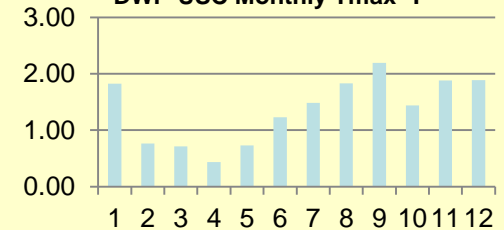
**Table 1. Average Temperatures for DWP, USC for Aug. 1999-June. 2014**

	Tmax		Tmin	
	DWP	USC	DWP	USC
1999	79.5	77.0	56.6	56.3
2000	75.8	74.3	56.0	55.8
2001	74.3	72.8	55.2	55.3
2002	74.9	73.5	55.1	55.4
2003	76.7	74.5	56.4	56.4
2004	76.1	74.3	56.1	56.5
2005	75.5	73.9	56.0	56.2
2006	76.5	76.3	56.4	57.2
2007	75.7	75	56.1	56.2
2008	77.2	76.1	56.5	56.7
2009	77.0	75.5	56.1	56.9
2010	75.0	74.4	54.8	57.0
2011	75.5	73.1	54.1	54.7
2012	76.3	74.8	56.6	56.2
2013	75.7	74.8	56.1	56.0
2014	75.3	74.8	55.5	55.7
AVG	77.1	74.7	55.9	56.1
Diff.	<b>1.7</b>		<b>-0.2</b>	

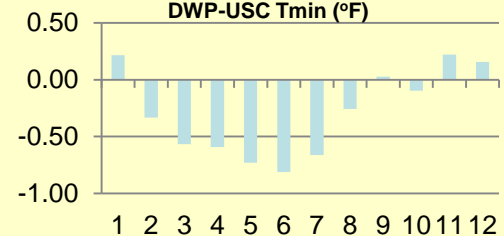
**DWP-USC Precipitation Differences (Inches)**



**DWP-USC Monthly Tmax °F**



**DWP-USC Tmin (°F)**



DWP site on top of a 2-story parking garage.



USC campus weather station resembles park.