



MRMS Operational Data (what, when, where, how)



Data & products

- Inputs
 - Radar: NEXRAD Level II (~140), Canada (~30)
 - Lightning: NLDN
 - Satellite: GOES East/West
 - Model: 13km RAP
 - Gauge: HADS
- Outputs: 120+ products
 - ConUS domain
 - 1km x 1km and 0.5km x 0.5km resolution
 - 2-min frequency for a majority of products
 - GRIB2 format
 - Data volume average for entire product suite is ~2.5 GB/hour

Request

- Data delivery via LDM (available now for all products) and SBN (starting early 2015; product subset)
- For LDM connections, email ncep.list.idp_support@noaa.gov
 - Use "MRMS Data Request" in the subject line
 - Provide IP, contact name, phone number, and email address

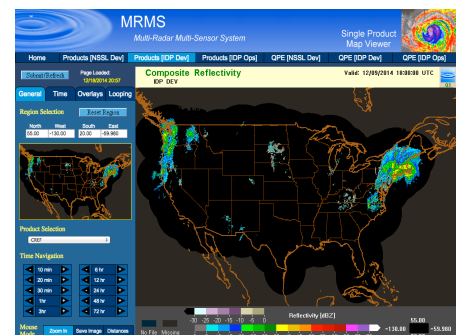
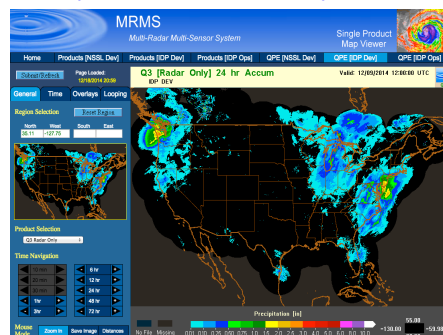
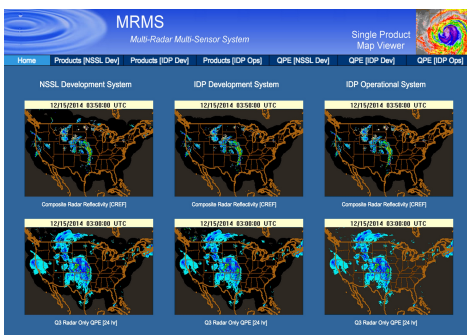
Read

- MRMS GRIB2 data uses custom GRIB2 product IDs. Information about those IDs is available at <http://www.nssl.noaa.gov/projects/mrms>
- There are several GRIB2 libraries available. NSSL staff modified a copy of *wgrib2* to read MRMS GRIB2 files and are working with software developers to officially update *degrib*.
 - For *wgrib2* details contact Heather.Moser@noaa.gov of NSSL
 - For *degrib*, check http://www.nws.noaa.gov/mdl/NDFD_GRIB2Decoder for a forthcoming update.

Display

- An operational website for displaying MRMS products is under development. An initial release is scheduled for June 2015
- Products (at a 10-min frequency) can be viewed via a temporary research website managed by NSSL/OU

<http://mrms.ou.edu/qvs.html>



CONTACTS Operations: ncep.list.idp_support@noaa.gov
 NSSL: carrie.langston@noaa.gov, heather.moser@noaa.gov, karen.cooper@noaa.gov