

Utilizing Technology to Customize Impact-Based Decision Support for NWS Portland Partners



Evan S Bentley, Jeremiah Pyle & Tyree Wilde
NOAA/National Weather Service

Portland, OR

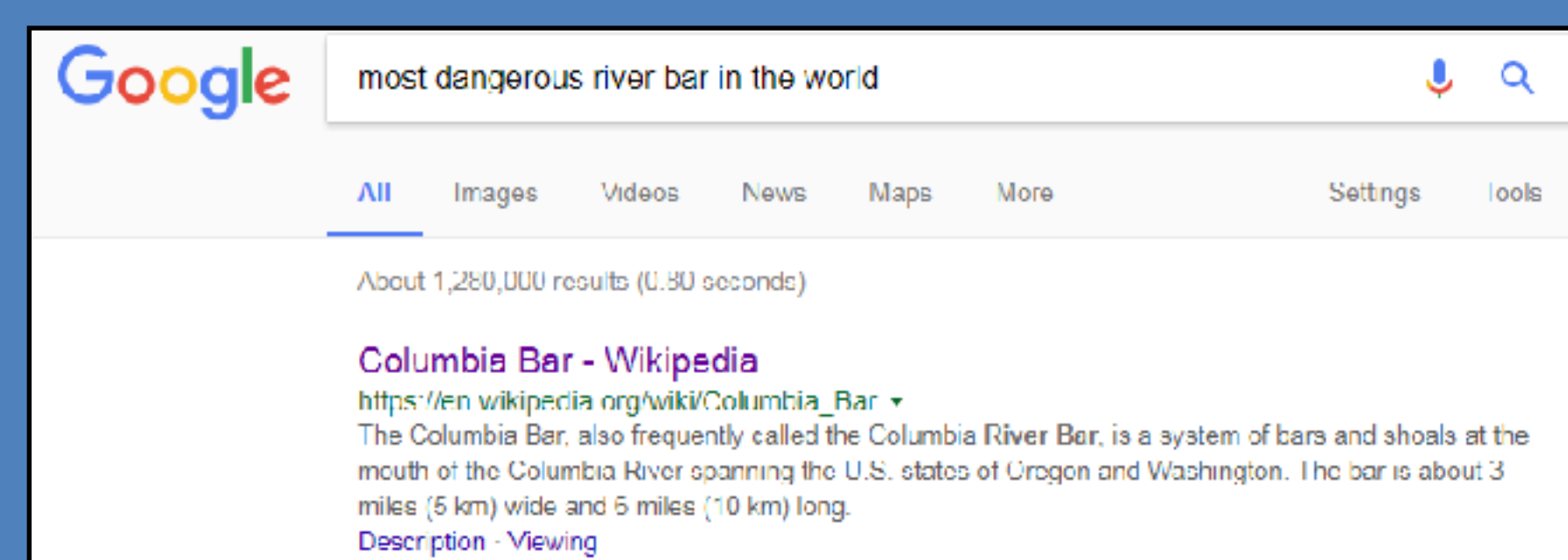
Impact-Based Decision Support Goals

1. Reach as many partners as possible
2. Provide partners specialized service whenever and however they need it



Question: Where to find time to provide specialized service for every partner given limited resources?
Answer: Utilize technology as much as possible!

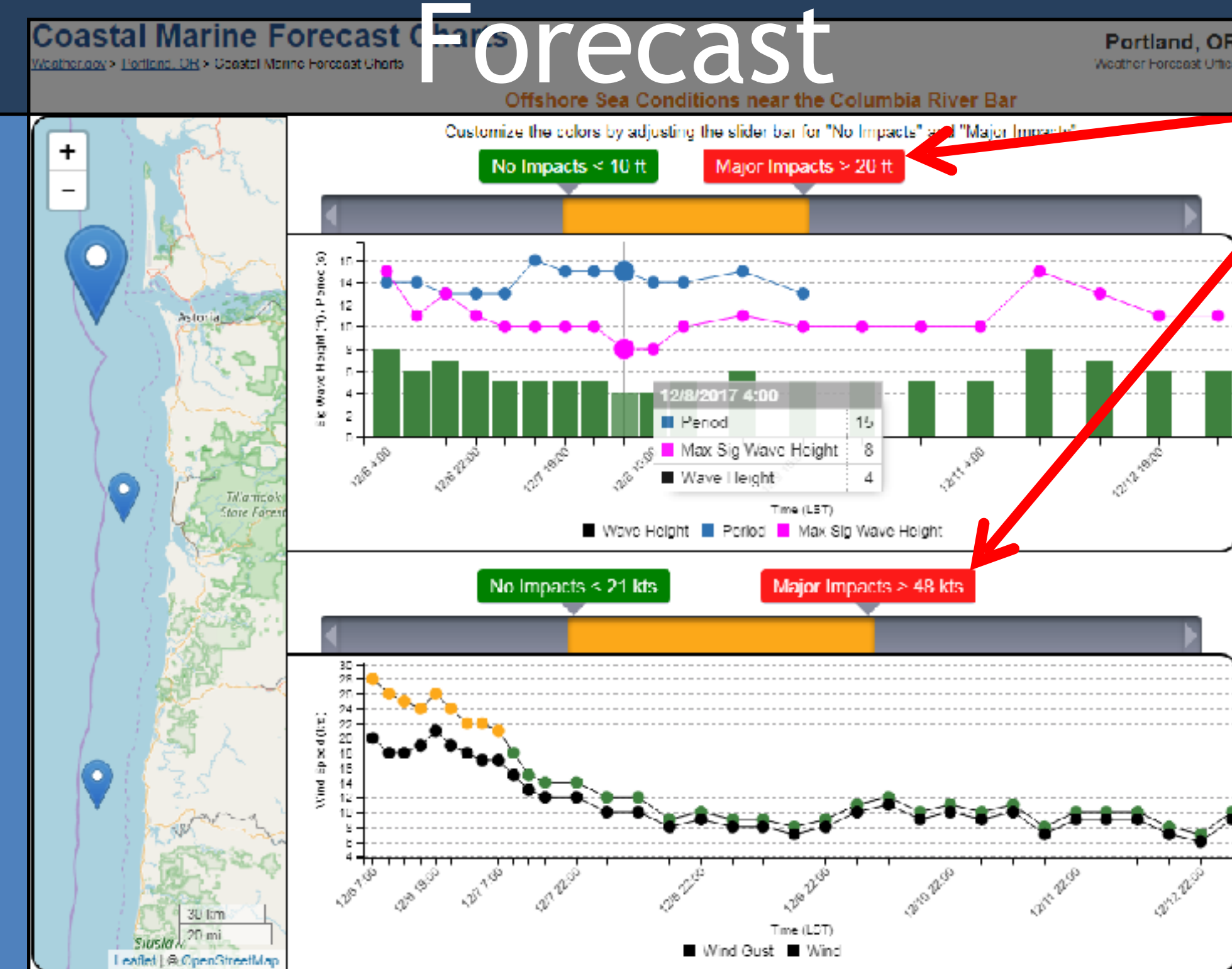
Threshold-Based Marine Forecast Chart Website



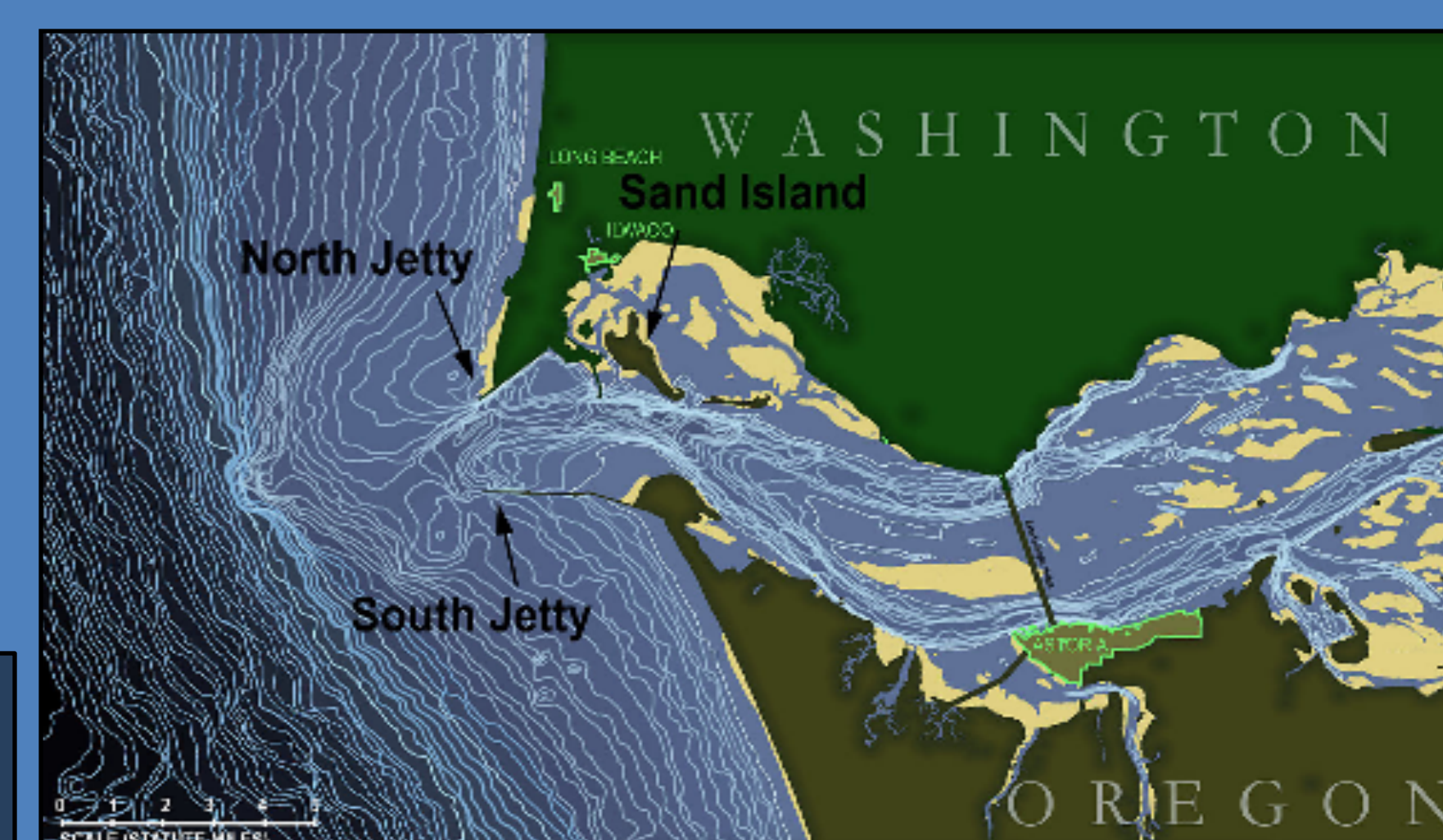
"I really appreciate the way the forecast information is displayed on this page. The color coded thresholds make it easy to quickly notice forecast adverse conditions. The customization of these thresholds is helpful to adjust for differing concerns and personal thresholds for each pilot."

-Dan Jordan (Columbia River Bar Pilot)

7 Day Wind/Wave Forecast

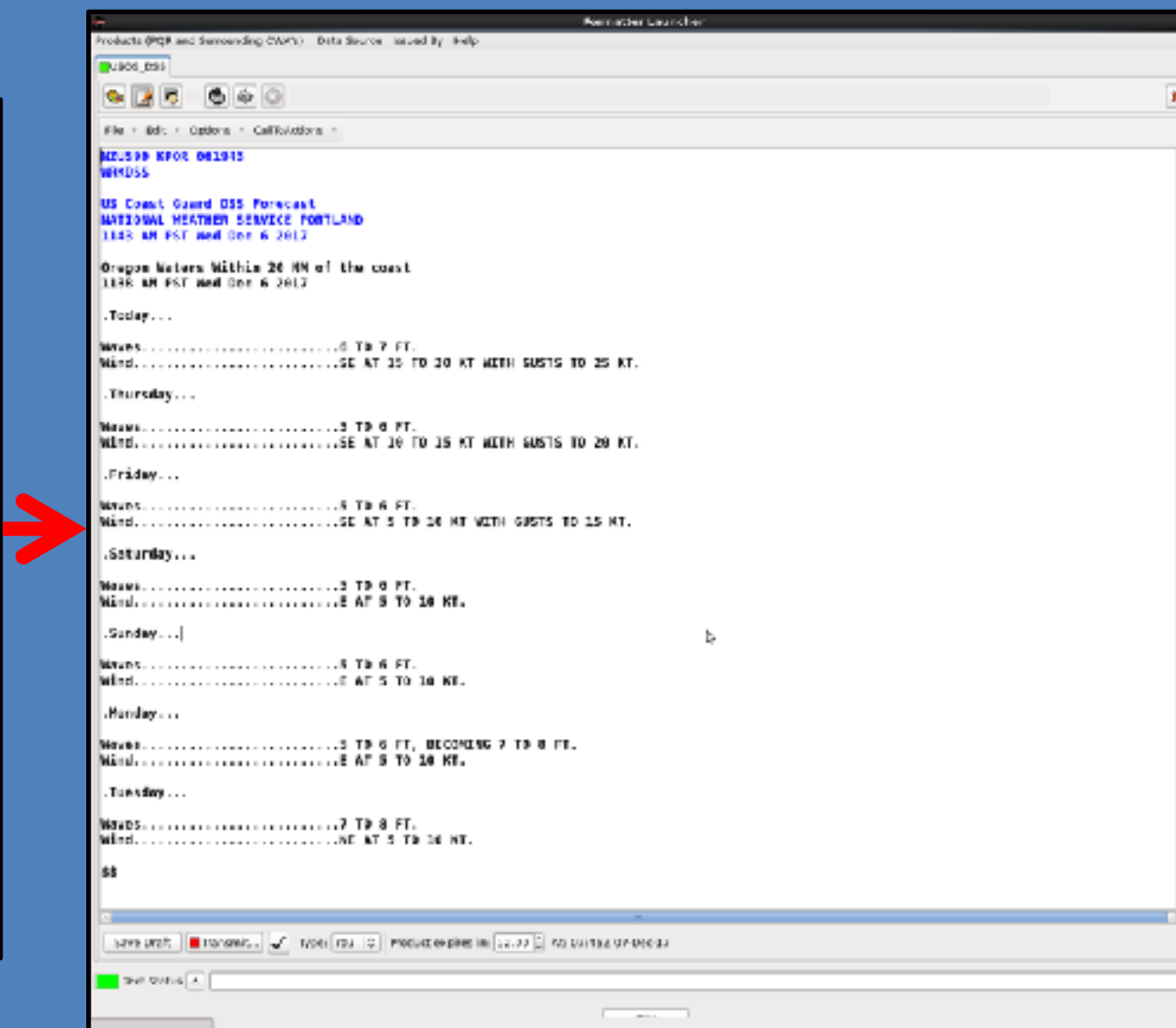
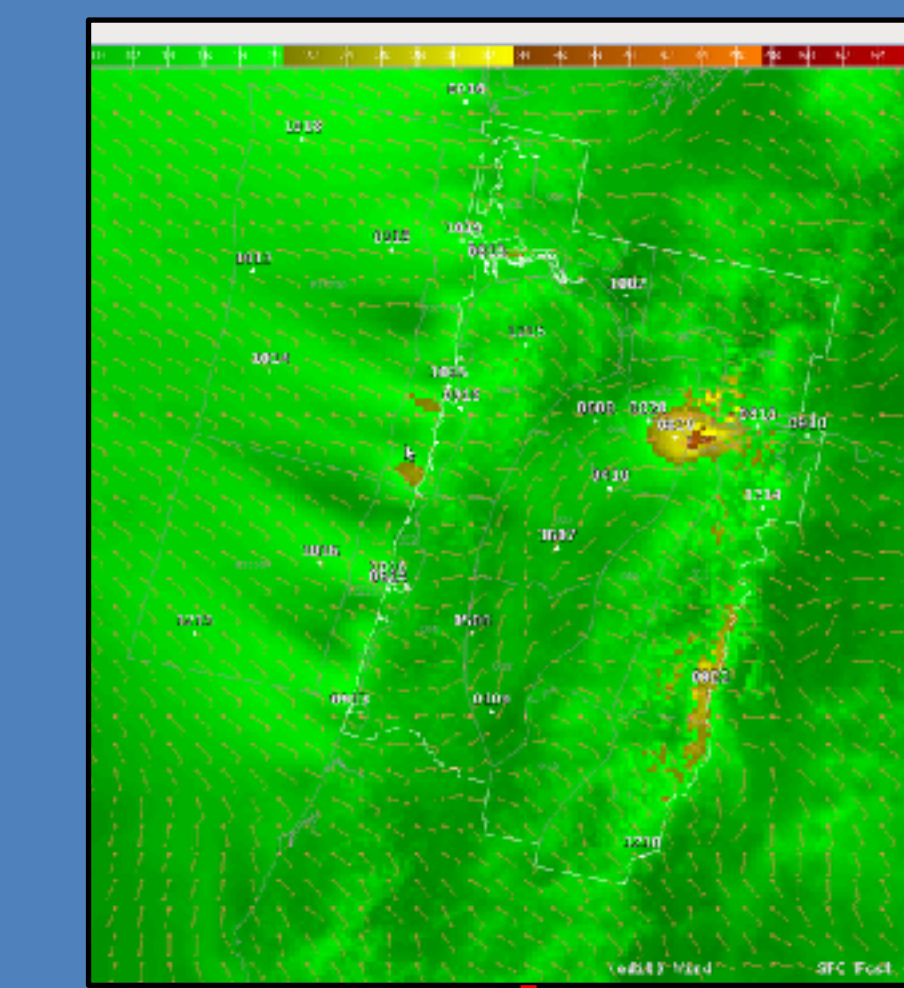
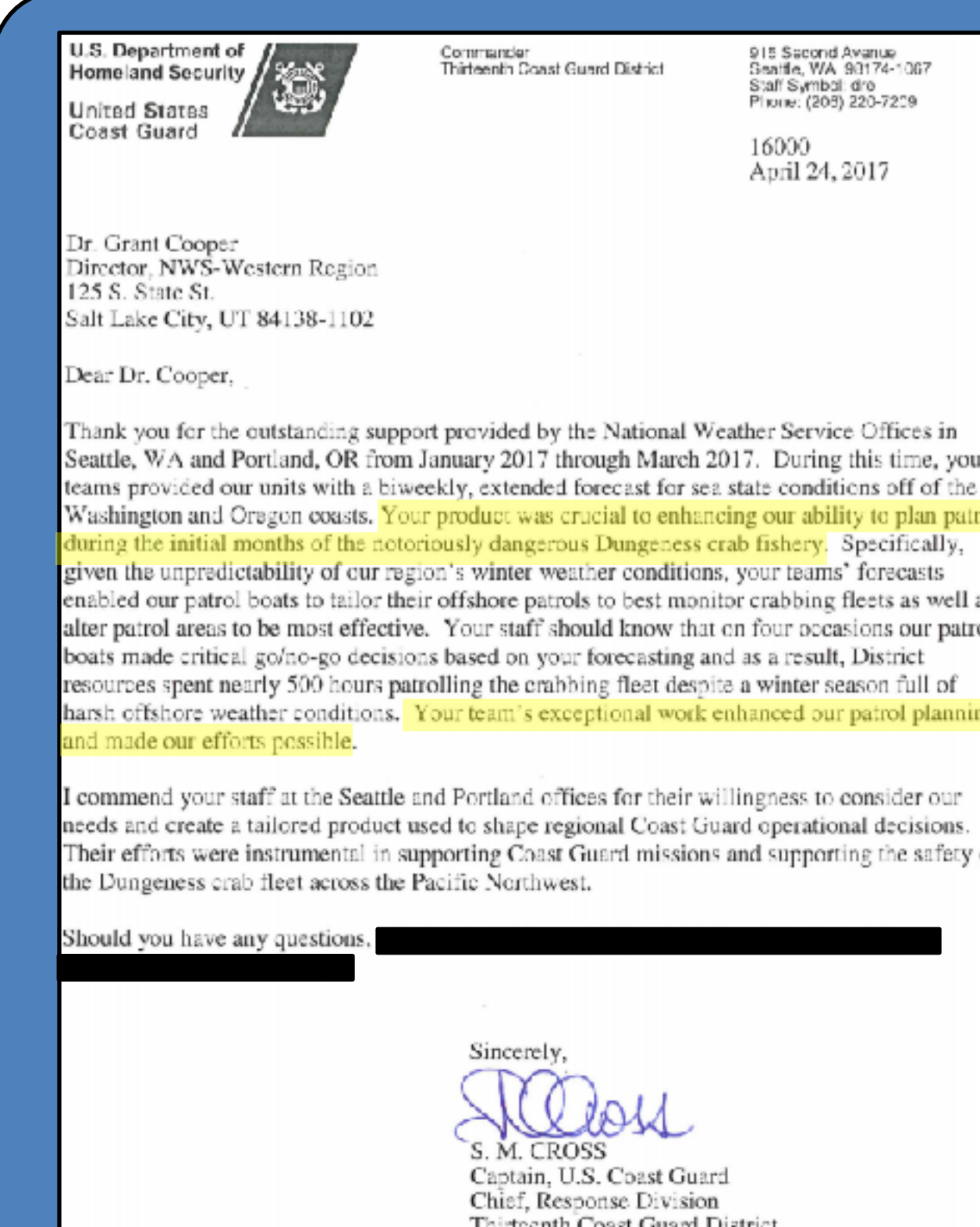


Customized threshold based coloring



Bar Closure = \$165,000 per hour

Decision Support Emails

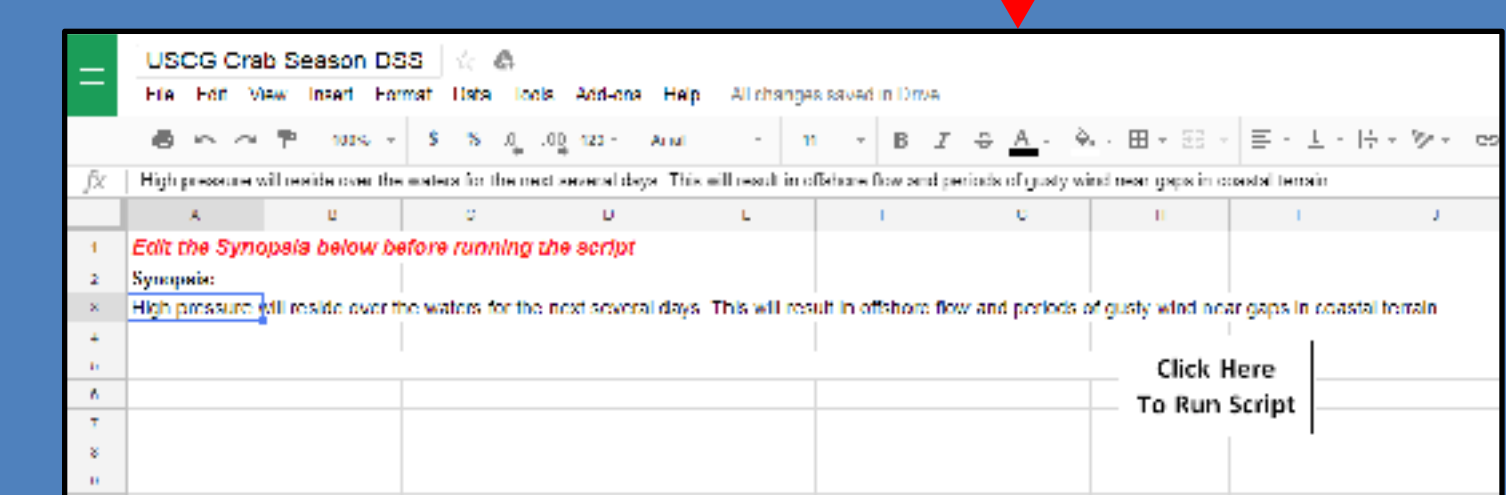


```
{ "Day": "Today",  
  "Waves": "8 TO 9 FT.",  
  "Wind": "NE AT 10 TO 15 KT WITH GUSTS TO 20 KT.",  
  "Day": "Tuesday",  
  "Waves": "6 TO 10 FT.",  
  "Wind": "NE AT 10 TO 15 KT WITH GUSTS TO 20 KT.",  
  "Day": "Wednesday",  
  "Waves": "5 TO 6 FT.",  
  "Wind": "SE AT 10 TO 15 KT.",  
  "Day": "Thursday",  
  "Waves": "5 TO 6 FT.",  
  "Wind": "SE AT 10 TO 15 KT.",  
  "Day": "Friday",  
  "Waves": "5 TO 6 FT.",  
  "Wind": "SE AT 10 TO 15 KT.",  
  "Day": "Saturday",  
  "Waves": "5 TO 6 FT.",  
  "Wind": "SE AT 10 TO 15 KT.",  
  "Day": "Sunday",  
  "Waves": "5 TO 6 FT.",  
  "Wind": "SE AT 10 TO 15 KT.",  
  "Day": "Monday",  
  "Waves": "5 TO 6 FT.",  
  "Wind": "SE AT 10 TO 15 KT.",  
  "Day": "Tuesday",  
  "Waves": "5 TO 6 FT.",  
  "Wind": "SE AT 10 TO 15 KT." }  
{"test": "end"}
```

Time to Produce:
2016: ~30 min
2017: ~5 min

Automatically colored when partner threshold met

FORECAST VALID: Jun 9, 2017 6 AM to 6 AM			
OVERVIEW			
Cool and showery weather expected to persist through the weekend, due to low pressure lingering near Oregon. There is a slight chance of thunderstorms today and Saturday, mainly in the afternoon.			
WEATHER IMPACTS			
Impacts should be minimal, though occasional showers will make it wet at times. There is a slight chance that any heavier showers could produce lightning, but lightning strikes are expected to be few and far between across the region. NWS Portland will monitor and notify the appropriate contacts if lightning becomes an immediate threat. South winds will be a little gusty this afternoon, but gusts should generally stay below 20 mph.			
FORECAST DETAILS			
	0800-1200 (PDT)	1200-1800 (PDT)	1800-0600 (PDT)
Weather	Cloudy, Showers developing. Total rainfall amounts around 0.10". Slight chance of thunderstorms.	Cloudy with Showers. Total rainfall amounts around 0.10". Slight chance of thunderstorms.	Cloudy, Showers likely. Total rainfall amounts around 0.10". Slight chance of thunderstorms.
Temperatures	64°F to 67°F	60°F to 62°F	60°F to 53°F
Winds (direction from)	South E to E mph	South around 10 mph	South E to E mph
Thunderstorms/Lightning	None	Slight chance (20%)	Slight chance (10%)
Columbia @ Vancouver (flood stage = 18h)	14.3 ft	14.5 ft	14.6 ft
Willamette @ Portland (flood stage = 18h)	14.1 ft	14.3 ft	14.3 ft



FORECAST OUTLOOK			
Date:	Location	Wave Height	Wind
Today (Dec 5)	OR Waters	8 TO 9 FT.	NE AT 10 TO 15 KT WITH GUSTS TO 20 KT.
	WA Waters	9 TO 10 FT.	E AT 10 TO 15 KT WITH GUSTS TO 20 KT.
Wednesday (Dec 6)	OR Waters	6 TO 7 FT.	NE AT 10 TO 15 KT WITH GUSTS TO 20 KT.
	WA Waters	7 TO 8 FT. BECOMING > 10 FT.	E AT 15 TO 20 KT WITH GUSTS TO 25 KT.
Thursday (Dec 7)	OR Waters	5 TO 6 FT.	SE AT 10 TO 15 KT.
	WA Waters	5 TO 6 FT.	SE AT 10 TO 20 KT WITH GUSTS TO 25 KT.
Friday (Dec 8)	OR Waters	4 TO 5 FT.	E AT 8 TO 10 KT.
			SE AT 10 TO 15 KT.