



» Wildfire

» Hurricane

» Tropical Cyclone

» Tsunami

» Flooding

» Earthquake

» Pandemic Influenza

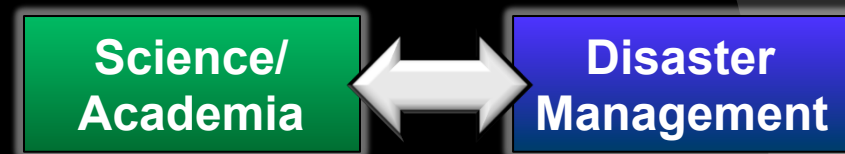
Fostering Disaster - Resilient Communities



DisasterAWARE Platform: EMOPS

PDC Background

- Working to bridge the gap between science/academia & disaster management practitioners through **applied** information research and **evidence-based** analysis.
- Currently managed by the **University of Hawaii**



PDC's Integrated Approach

- Applied Science & Technology
- Capability Building
- Evidence-Based Information Products
 - Policy & Decision Makers
 - Disaster Managers
 - Planners
 - Humanitarian Assist. Missions

Integrating Information, Science, & Technology

Observation Systems & Data Collection

Improve Decision-support Capabilities

Advanced Applications, Models, Risk & Vulnerability Assessments

DisasterAWARE Platform

- ◎ DisasterAWARE (**A**ll-hazard **W**arning, **A**nalysis and **R**isk **E**valuation)
 - An integrated platform providing situational awareness, decision support, and information exchange capabilities to disaster management decision makers.
- ◎ DisasterAWARE provides an interoperable platform that incorporates international best practice methodologies and technologies for **data acquisition, hazard modeling, risk and vulnerability assessment, mapping, visualization, and communications.**

DisasterAWARE Platform

EMOPS

- Integrated Multi-hazard Monitoring
- Disaster Early Warning
- Automated / Integrated Modeling
- Exposure (Risk) Maps & Historical Hazard Data
- Intra-Agency Info Sharing
 - User Added Situation Reports
 - Damage Products, ...
- Remote Access (Disaster Alert)



Applications

Disaster Alert

- Mobile applications for iOS and Android devices
- Real-Time Hazard Reporting
- Search: Disaster Alert (iTunes/Google Play)



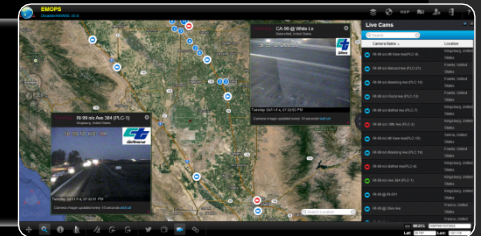
ATLAS

- Publicly accessible application
- Real-Time Hazard Reporting
- Basedata and Observations
- <http://atlas.pdc.org/atlas/>



EMOPS

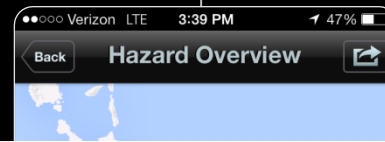
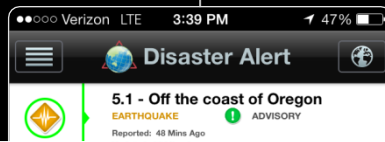
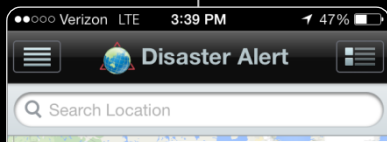
- Used by State / Local / Foreign Disaster Practitioners
- Enhanced content and response operations
- Authorized users can add hazards & products
- <http://emops.pdc.org/emops/>



Custom

- Fee based custom applications
- Agency or region specific platform
- Customized content and response operations
- Examples: VinAWARE, InAWARE, DMRS, etc...





Disaster Alert



ATLAS



EMOPS



Custom

Applications

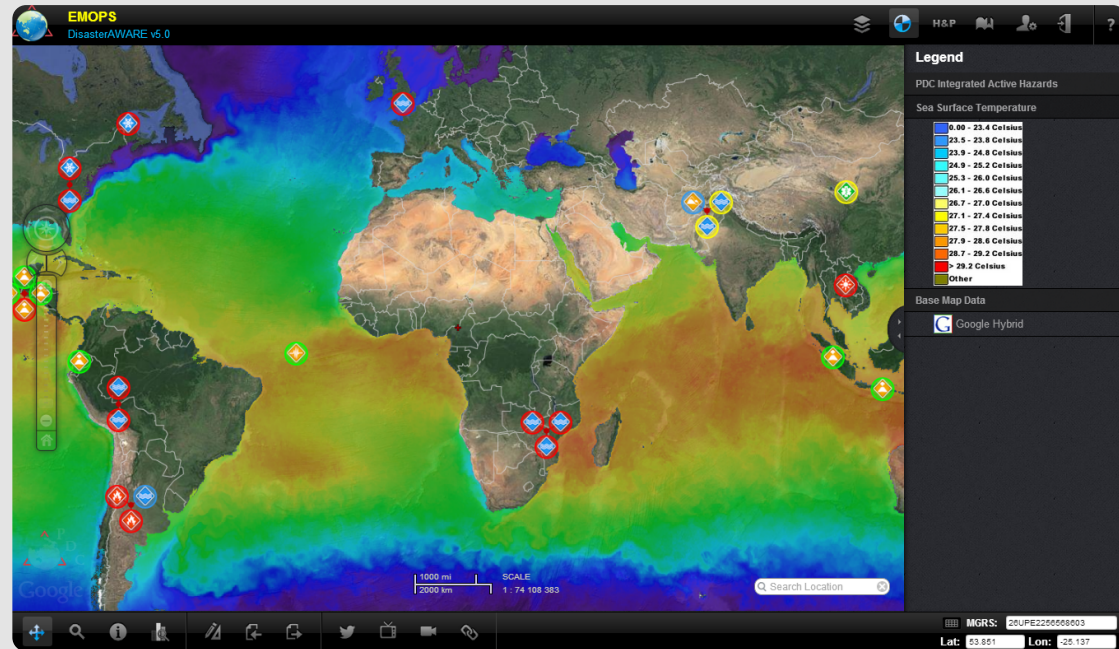
Disaster
Alert

ATLAS

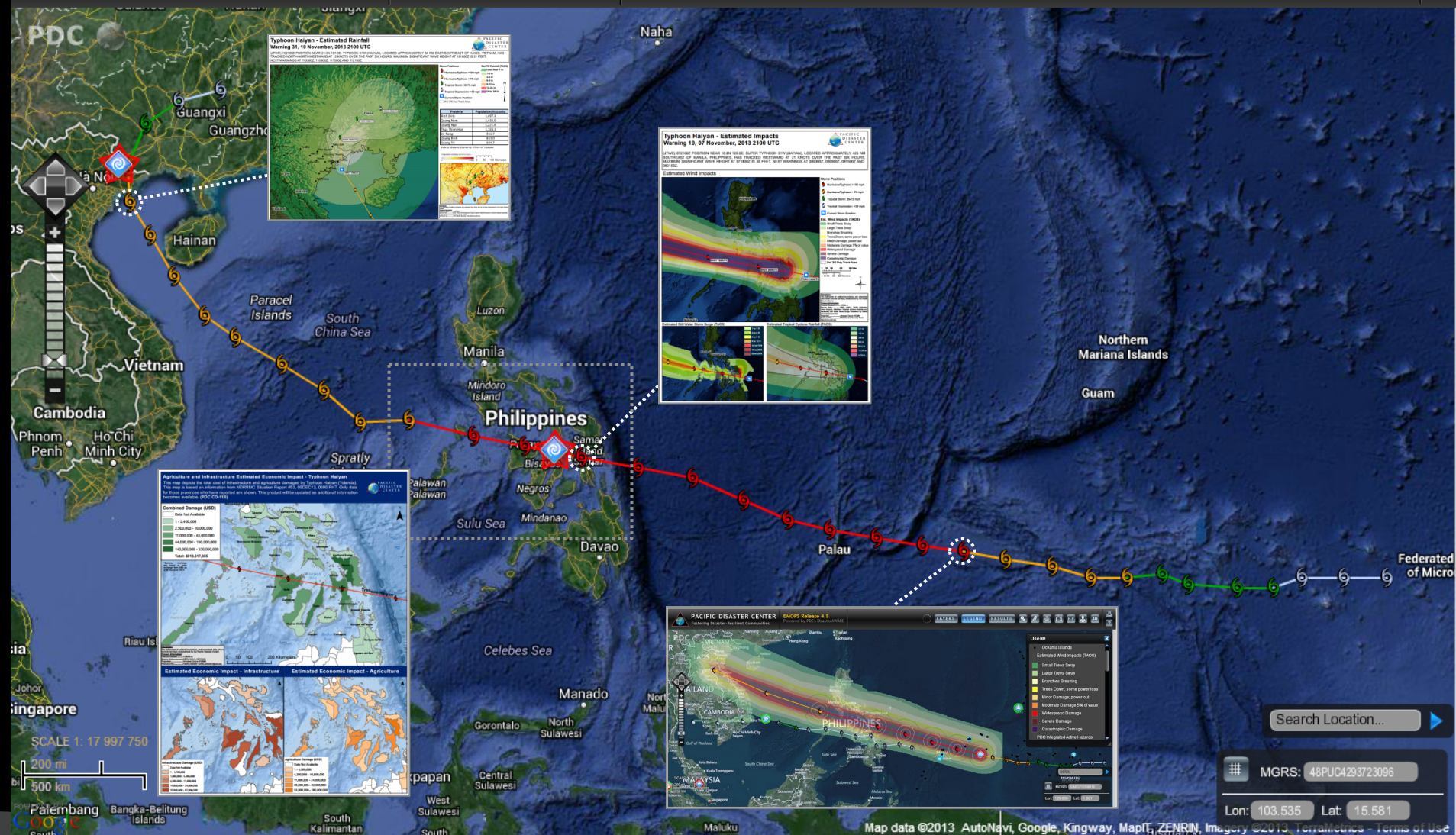
EMOPS

Custom

EMOPS is made available to civil and military authorities around the world to support endeavors of humanitarian assistance in the realm of disaster management and risk reduction.



<http://emops.pdc.org/emops/>



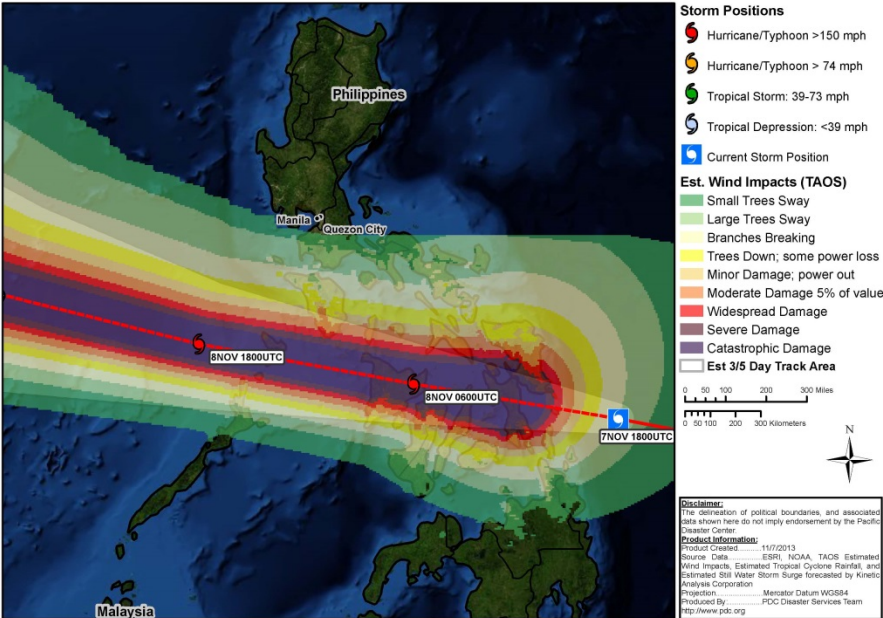
Typhoon Haiyan - Estimated Impacts

Warning 19, 07 November, 2013 2100 UTC

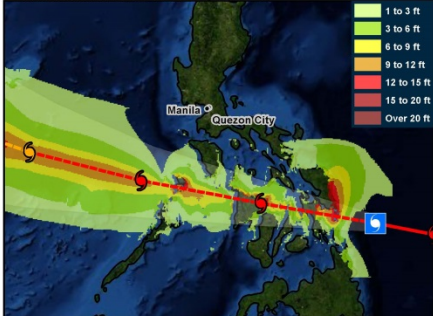


(JTWC) 072100Z POSITION NEAR 10.8N 126.0E. SUPER TYPHOON 31W (HAIYAN), LOCATED APPROXIMATELY 425 NM SOUTHEAST OF MANILA, PHILIPPINES, HAS TRACKED WESTWARD AT 21 KNOTS OVER THE PAST SIX HOURS. MAXIMUM SIGNIFICANT WAVE HEIGHT AT 071800Z IS 50 FEET. NEXT WARNINGS AT 080300Z, 080900Z, 081500Z AND 082100Z.

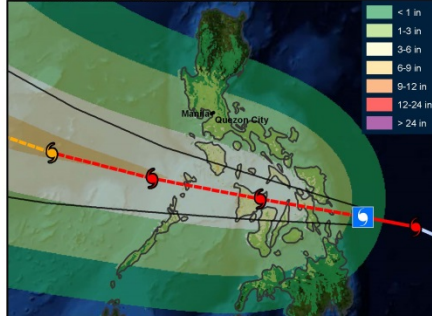
Estimated Wind Impacts



Estimated Still Water Storm Surge (TAOS)

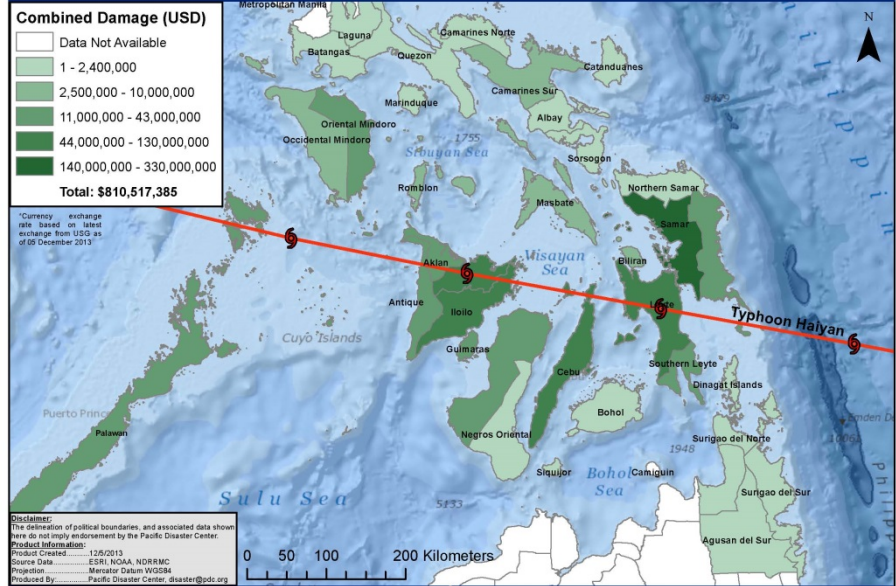


Estimated Tropical Cyclone Rainfall (TAOS)

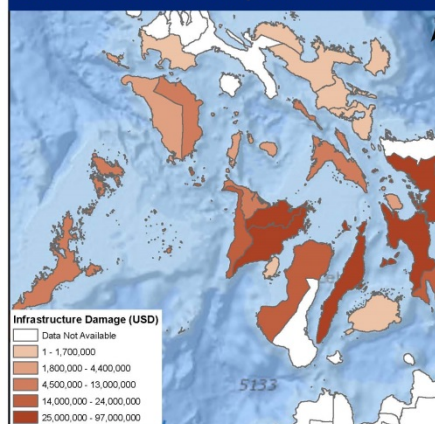


Agriculture and Infrastructure Estimated Economic Impact - Typhoon Haiyan

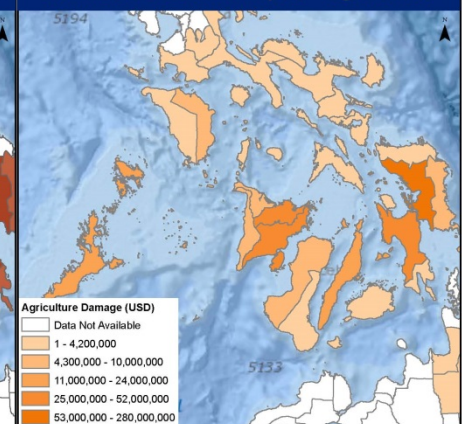
This map depicts the total cost of infrastructure and agriculture damaged by Typhoon Haiyan (Yolanda). This map is based on information from NDRRMC Situation Report #53, 05DEC13, 0600 PHT. Only data for those provinces that have reported are shown. This product will be updated as additional information becomes available. (PDC CD-11B)



Estimated Economic Impact - Infrastructure



Estimated Economic Impact - Agriculture







"Fostering Disaster-Resilient Communities"

<http://www.pdc.org>