

Science for Decisionmaking – Current and Future Directions

April 2, 2014



Olivia Barton Ferriter
Acting Associate Director for Office of Budget, Planning and Integration
U.S. Geological Survey

Start
with **Science**

U.S. Department of the Interior
U.S. Geological Survey

Science to Support Decisions

Increasing Number of People in
Harm's Way -> **Build More
Resilient Communities**

Climate Change Disrupting
Communities -> **Advise on
Adaptation Strategies**

Rising Demand for Limited
Resources -> **Develop Renewable
Resources**

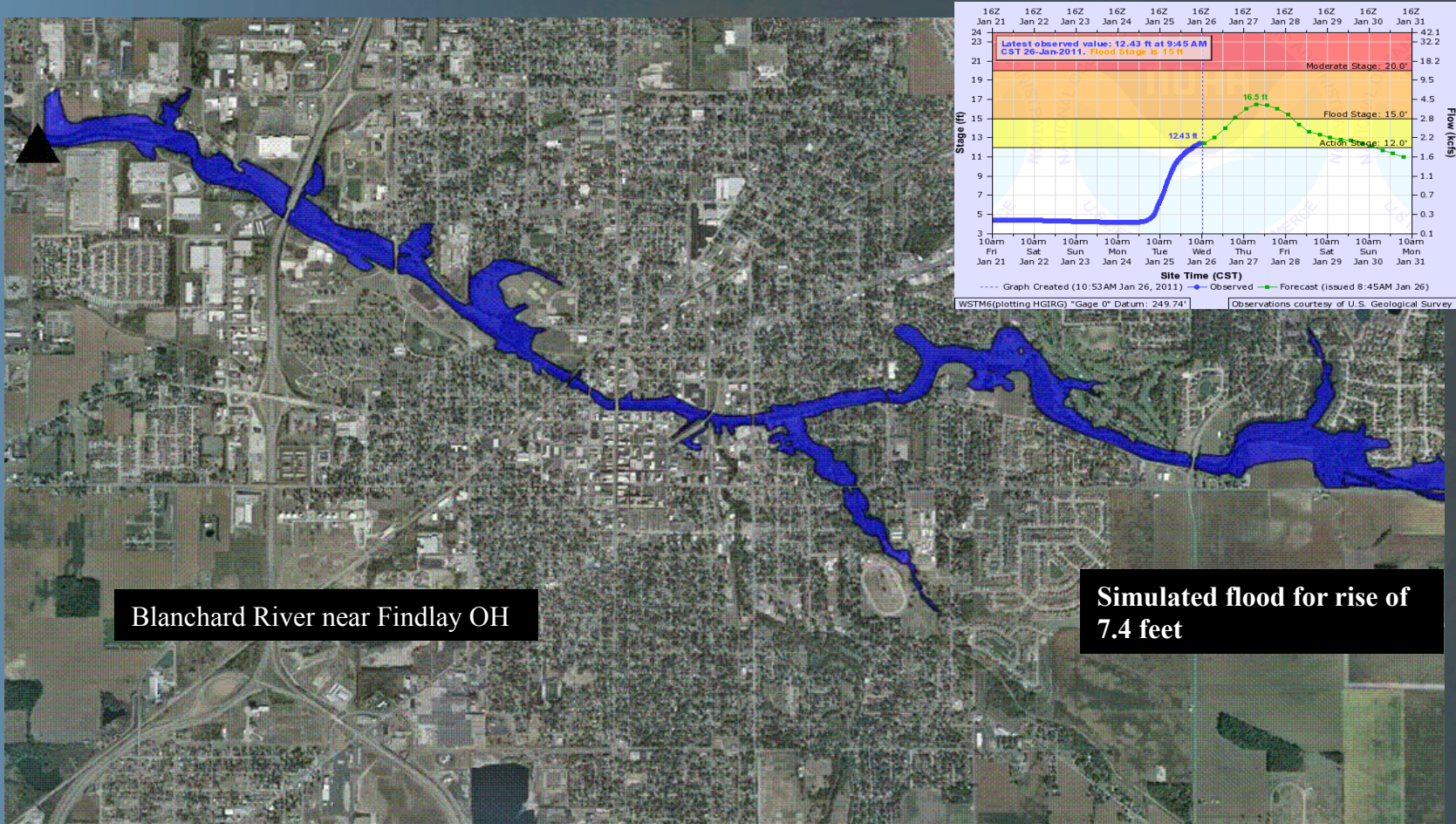
Protecting Important Ecosystems ->
**Create Models for Evaluating
Ecosystem Services**



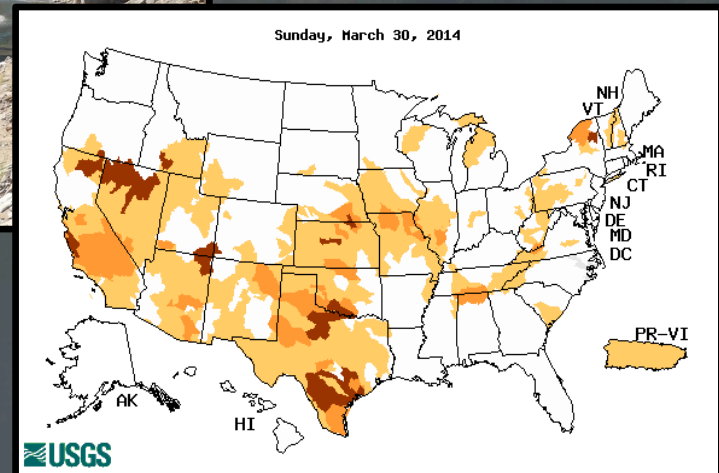
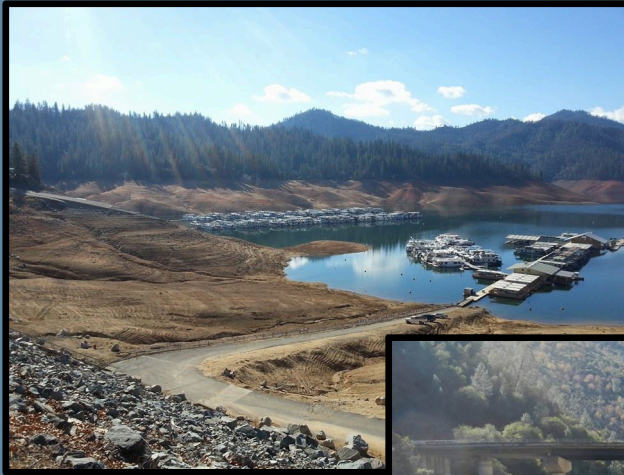
Water Monitoring and Real-Time Information



Flood Inundation Mapping – Translating a hydrograph into operational maps that communicate areas of risk



Drought Monitoring

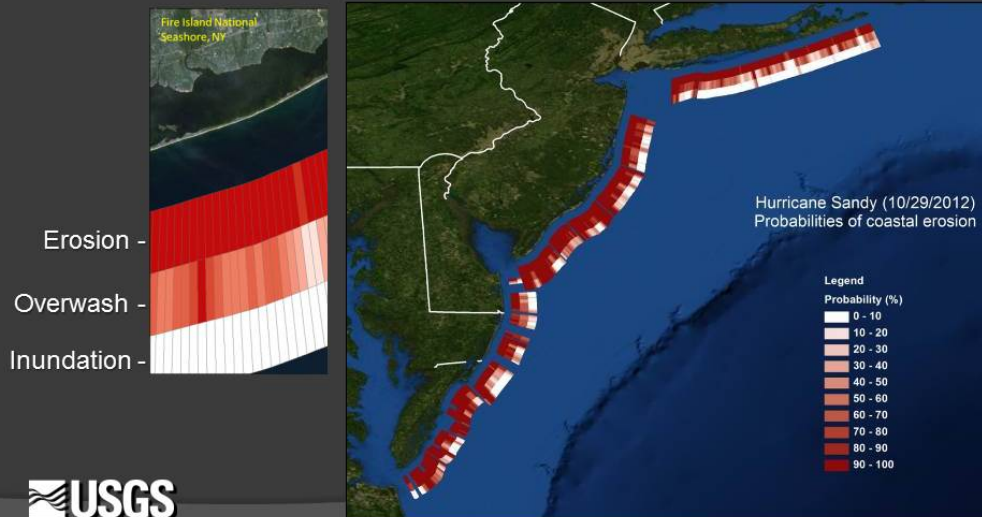


Map of below normal 7-day average streamflow compared to historical streamflow for the day of year (United States)

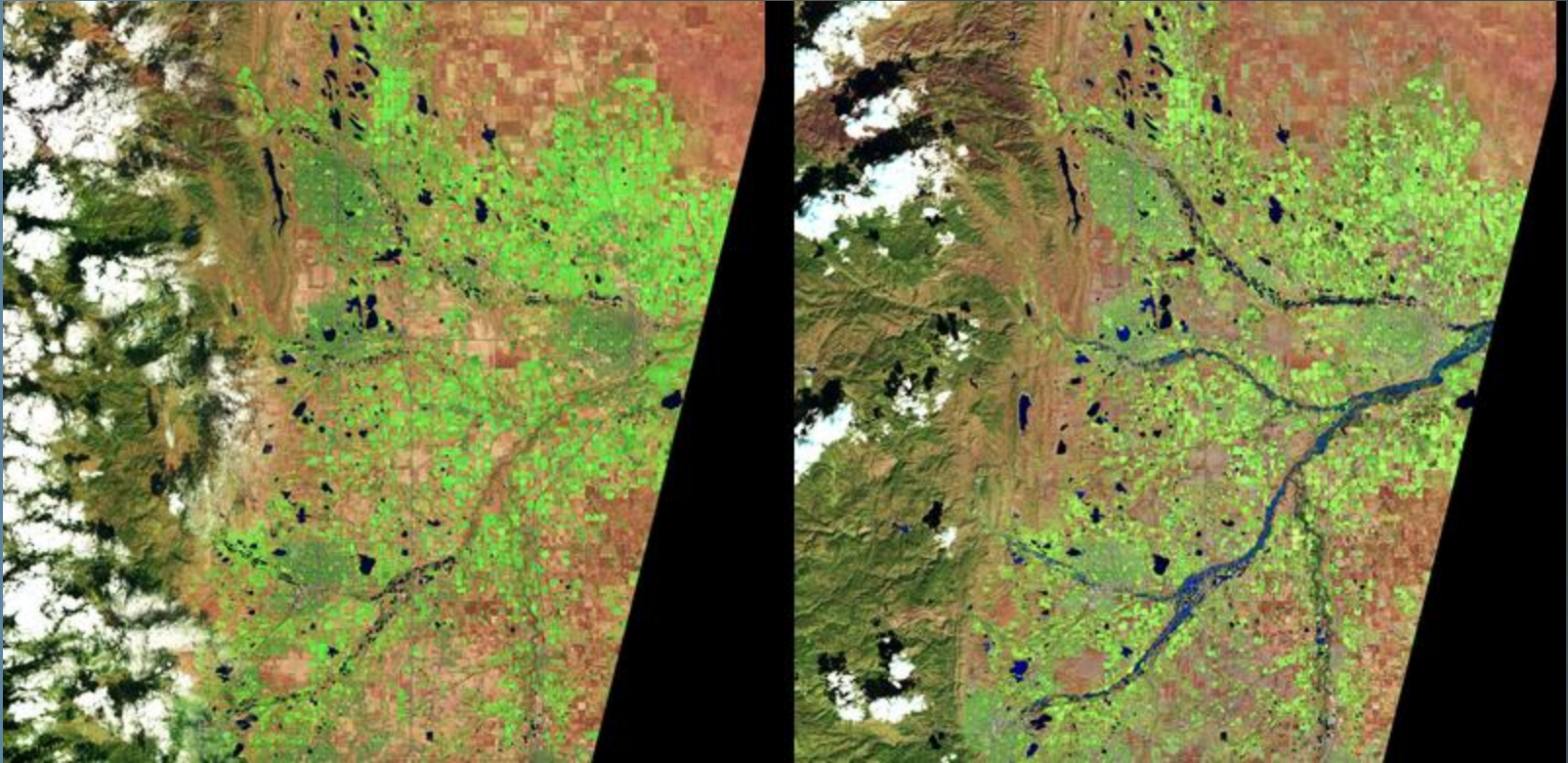
Hurricane Sandy – USGS Science Aids in Building Resilient Communities

USGS Pre-Storm Action

Forecasts of potential coastal change



Landsat Data Continuity



August 16, 2013

September 17, 2013

Pair of Landsat 8 images shows flooded South Platte River near Greeley, Colorado

USGS Climate Science – Helping Address Challenges Facing Managers



Challenges and Opportunities

Next Generation Workforce

