



Capital Weather Gang

- Two full time employees
- 20 freelancers and contractors
- Tropical weather
- Severe storms
- Winter storms
- Space weather
- Astronomy
- Data and climatology
- Seasonal forecasting
- Photography

WAMU 88.5

Winter descends on D.C. tonight – snowflakes possible, but minimal accumulation

The majority of the storm's precipitation looks like it will fall after midnight tonight and before 9 a.m. tomorrow.

Angela Fritz · 2 days ago

Weekend temperatures could rank among coldest on record so late in season

Winter has apparently returned to Washington.

Angela Fritz, Jan Langelier · 2 days ago

For the second time this week, full double rainbows light up the sky over D.C.

As the clouds parted over Nationals Park, a beautiful rainbow formed in their wake.

Angela Fritz · 2 days ago

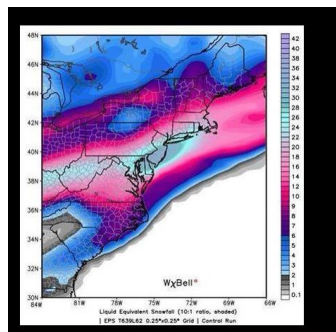
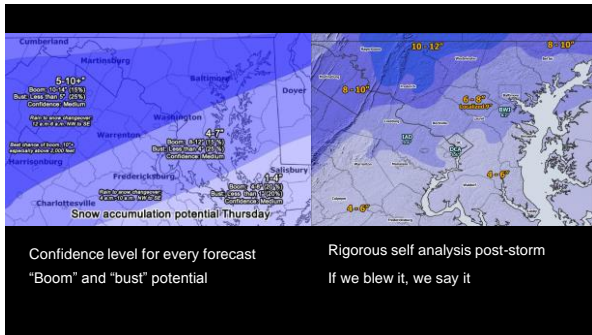
Buffalo, N.Y., in the midst of a truly insane lake effect snow storm

Would naming winter storms be a better idea if more organizations got on board?

Sun ejects intense, X-class flare, signaling increase in solar activity

No, Donald Trump, the existence of fall does not disprove global warming





Delmarva Firefighter Forums
Like This Page · January 29 '16

Folks, we don't usually talk about the weather on here, in fact, we never have. But this needed to be shown (thank you to our friends at Mid Atlantic Weather). Early models are predicting a major blizzard for February 8-10. And we mean major. 24-34 inches of snow or more is currently being predicted for parts of Maryland, Delaware, New Jersey, and the NYC region. A lot can change between now and then, these are early models, but that's what the weather folks are seeing. — with Erick Warren, Angie Ortiz, Juan Ortiz and 16 others.

Like · Comment · Share

2,725 people like this. Top Comments +

41,840 shares

Adam Caskey Mid-Atlantic Storm Watch is doing you and everyone else a disservice. They are simply being irresponsible.
Like · Reply · 4/14 · January 29 at 10:25am

Mike Nicholson Yea... besides everyone knows The Farmers Almanac is the only accurate source for forecasting.
Like · 4/1 · January 29 at 11:55am

The weekend storm – some commentary

- It was the antithesis of public service when the 30 inch snowstorm graphic was posted & hyped last week. It continues to be the antithesis of public service.
- Yesterday, we continued to receive more inquiries about the 'weekend storm' from the general public vs. the very real threat of the major ice storm that was almost upon us.
- These calls often involved those who were worried about travel/meeting plans involving friends & family. This is all needless worry imposed upon the public by some very thoughtless behavior. Do not reinforce that thoughtless behavior by spreading the rumor. **It was nonsense then; its nonsense now.**

National Weather Service
Photo: @gawler · Study



Account home
Capital Weather Gang @capitalweather

28 day summary with change over previous period

Followers	597 +53%	11,4M +27%	434K +164.6%	3,692 +17.2%	243K +25.6%
-----------	----------	------------	--------------	--------------	-------------

Capital Weather Gang @capitalweather
Winter's
> not
> Over! (sorry...)
wapo.st/1DLYVDR

Capital Weather Gang @capitalweather
We hereby name this winter storm #Snowzilla
wapo.st/1RWGQkU

Angela Fritz @angelafritz
What is the worst weather?
17% Rain
17% Snow
26% Over
30% Not
1,137 votes · 1,148 thoughts
1:16 PM · 21 May 2015

