

# Correcting apparent off-season CO<sub>2</sub> uptake due to surface heating of an open path gas analyzer: progress report of an ongoing study

G.G. Burba, D. J. Anderson, Liukang Xu and D.K. McDermitt

LI-COR Biosciences, Lincoln, NE, USA

---

## Abstract

A number of Eddy Covariance flux sites with open path analyzers have observed small apparent CO<sub>2</sub> uptake outside the growing season. In this study, we propose an additional correction due to instrument surface heating as a part of the Webb-Pearman-Leuning correction. Effects of the proposed correction were examined on hourly and seasonal time scales. Significant reduction in apparent CO<sub>2</sub> uptake during off-season periods was observed, while fluxes during the growing season were not noticeably affected. The proposed correction may be useful for future CO<sub>2</sub> flux research, and can also be applied to pre-existing data.

---

## 1. Introduction

Open-path infrared gas analyzers are low maintenance high-quality sensors widely used in field research (Ameriflux, 2006). As more year-round carbon flux studies become available, there is growing concern about apparent off-season CO<sub>2</sub> uptake being measured when it is physiologically unreasonable to expect it (Hirata *et al.*, 2005). Solving this problem is an important step in improving CO<sub>2</sub> measurements, annual NEE estimates, and subsequent global carbon exchange and climate modeling efforts.

One laboratory study and two field experiments are currently underway to examine the influence of the open-path infrared gas analyzer surface temperature on the measured CO<sub>2</sub> flux using the Eddy Covariance technique. The original concept and some initial results were presented at the Ameriflux Annual Meeting in October, 2005 (Burba *et al.*, 2005a,b), and has been developed further in subsequent months due to the interest and enthusiasm generated in the flux research community towards resolving this issue. Here we present the latest updates from these experiments: a theoretical correction due to the surface heating is introduced, the relationship of instrument surface temperature and ambient air temperature is investigated, and the effect of an additional term on the CO<sub>2</sub> fluxes is examined. The following specific questions are addressed:

- (1) Do the electronics inside the sensor head contribute substantially to instrument surface heating?
- (2) Is the air in the optical path of the open-path analyzer significantly warmer than the ambient air due to the heated instrument surface?
- (3) How do the electronics and ambient factors combine to affect the final surface temperature?

- (4) What is the effect of the final surface temperature on the carbon dioxide flux data?

## 2. Concept of the correction due to instrument surface heating

The surface of the open-path infrared gas analyzers (*e.g.*, LI-7500, LI-COR Inc., Lincoln, NE) could be warmer than the ambient air due to heat generated by the electronics in and instrument's sensor head (chopper motor, heating of the chopper housing, infrared source, thermoelectric coolers, etc.), and by solar radiation. The instrument may also be cooled by emission of long-wave radiation and by wind-induced convective exchange (Fig. 1A). The heat flux from an instrument surface is in addition to the ambient heat flux: colder air continuously enters the open optical path, and is warmed and expanded by the warm instrument surface in the same way that the atmosphere is warmed by the soil surface (Burba *et al.*, 2005a).

Another way to look at this process is on the scale of two measurement scans (Fig. 1B) for a situation in which there is no actual flux and no change in actual CO<sub>2</sub> mole fraction. With a decrease in horizontal wind speed (scan1), air in the path gets warmer than ambient because there is more time to heat it, and expansion takes place; so, CO<sub>2</sub> number density is lower than ambient. At the same time,  $w'$  is positive to assure momentum flux is always toward the surface. With an increase in horizontal wind speed (scan 2), the air is heated less, expansion is less, and CO<sub>2</sub> number density is closer to ambient. At the same time  $w'$  is negative (to keep momentum transfer toward the surface).

Thus, from the covariance calculation ( $\overline{w'C'}$ ), a false uptake would be observed when no actual flux is occurring.

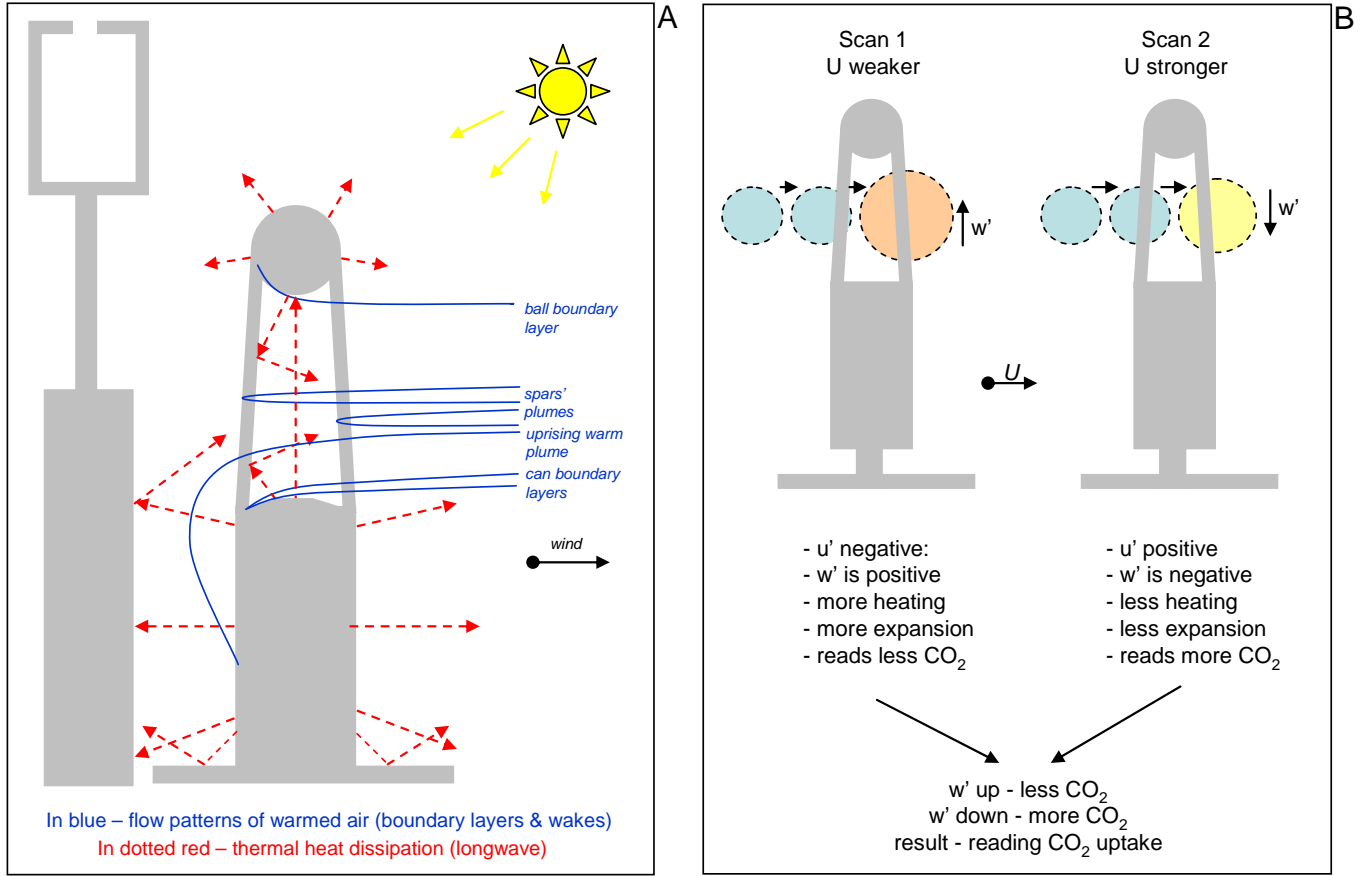


Figure 1: (A) Schematics of the standard LI-7500 setup & related heat dissipation; (B) Visualization of the concept: two measurement scans when there is no actual flux and no change in  $CO_2$  mole fraction occurs. Scan 1: with a decrease in a horizontal wind speed, air in the path gets warmer (more time to heat it), expansion takes place,  $CO_2$  number density is lower, and  $w'$  is positive. For scan 2 the situation is reversed. Therefore, an apparent uptake can be observed when there is no actual flux.

### 3. Derivation of the correction due to instrument surface heating

The effects of such heating could be included in the Webb-Pearman-Leuning correction (WPL: Webb *et al.*, 1980) as an additional heat flux term (Burba *et al.*, 2005a). The WPL correction, in general, compensates for the fluctuations of temperature and water vapor affecting measured fluctuations of  $CO_2$  and  $H_2O$ . In general for an open-path  $CO_2$  measurement, putting all constants together, the flux equation could be written in the following form:

$$Fc = Fc_o + 1.6077 \frac{E}{\rho_d} \frac{q_c}{1 + 1.6077 \frac{\rho_v}{\rho_d}} + \frac{H}{\rho C_p} \frac{q_c}{T_a + 273.15} \quad (1)$$

where  $Fc$  is— final corrected  $CO_2$  flux;  $\rho_d$  — dry air density;  $Fc_o$  — initial uncorrected  $CO_2$  flux;  $\rho_v$  — water vapor density;  $E$  — evapotranspiration;  $\rho$  — total air density;  $q_c$  — mean ambient  $CO_2$  density;  $C_p$  — specific heat of air;  $H$  — sonic sensible heat flux;  $T_a$  — air temperature. In a similar manner for water vapor, the flux equation could be written as follows:

$$E = (1 + 1.6077 \frac{\rho_v}{\rho_d}) E_o + (1 + 1.6077 \frac{\rho_v}{\rho_d}) \frac{H}{\rho C_p} \frac{\rho_v}{T_a + 273.15} \quad (2)$$

Now, let us imagine that the instrument is warm, and we can not distinguish between the multiple processes shown in Fig 1A. Yet, we could assume some resultant expansion of the air by a sensible heat flux created by instrument surface heating. Such a flux can be estimated from the temperature gradient using resistance approach (Montieth, 1963) as follows:

$$H_I = \frac{\rho C_p (T_s - T_a)}{r_a} \quad (3)$$

where  $H_I$  – sensible heat flux from the warm instrument to the ambient air,  $T_s$  – instrument surface temperature, and  $r_a$  – aerodynamic resistance. For an instrument oriented near vertically, only a fraction of  $H_I$  would affect the measurement because the wind will remove much of the warmed air from the optical path, carrying away most of  $H$  without affecting the measurements. However, a portion of the warmed and expanded air will remain in the boundary layer, reducing the measured air density and influencing the measurement (Fig. 1A). The fraction  $fr$  of  $H_I$  retained in the optical path is called  $H_P$  and can be expressed as follows:

$$H_P = fr H_I \quad (4)$$

So, combining Eqs. 1,3, and 4, the WPL would be transformed as follows:

$$FC_{new} = FC_o + 1.6077 \frac{E}{\rho_d} \frac{q_c}{1 + 1.6077 \frac{\rho_v}{\rho_d}} + \frac{(H + fr(\rho C_p (T_s - T_a) / r_a))}{\rho C_p} \frac{q_c}{T_a + 273.15} \quad (5)$$

The term  $E$  in Eq. 5 also needs an additional heat correction as well (Eq.2), such that:

$$E = (1 + 1.6077 \frac{\rho_v}{\rho_d}) E_o + (1 + 1.6077 \frac{\rho_v}{\rho_d}) \frac{(H + fr(\rho C_p (T_s - T_a) / r_a))}{\rho C_p} \frac{\rho_v}{T_a + 273.15} \quad (6)$$

If open-path flux data have already been corrected in the traditional way (frequency response and WPL), then the additional correction for  $E$  would be (from Eqs. 2 and 6):

$$E_{new} = E + fr(1 + 1.6077 \frac{\rho_v}{\rho_d}) \frac{(T_s - T_a) \rho_v}{r_a (T_a + 273.15)} \quad (7)$$

and the correction to  $F_c$  for data already corrected in the traditional way, would be (from Eqs. 1,5 and 7):

$$FC_{new} = FC + fr \frac{(T_s - T_a) q_c}{r_a (T_a + 273.15)} (1 + 1.6077 \frac{\rho_v}{\rho_d}) \quad (8)$$

where  $fr \frac{(T_s - T_a) q_c}{r_a (T_a + 273.15)}$  represents the instrument heating correction for  $F_c$ . The additional correction to  $E$  in Eq. 6 is represented by  $(1 + 1.6077 \frac{\rho_v}{\rho_d})$ ,

which is typically very small, on the order of 0.5-2% for a majority of ambient temperature and humidity ranges.

For the particular case of the LI-7500, each of the two major structural elements of the instrument (can and ball, Fig. 1A) may contribute differently to the proposed additional term in WPL correction:

$$FC_{new} = FC + fr_{can} \frac{(T_s^{can} - T_a) q_c}{r_a^{can} (T_a + 273.15)} (1 + 1.6077 \frac{\rho_v}{\rho_d}) + fr_{ball} \frac{(T_s^{ball} - T_a) q_c}{r_a^{ball} (T_a + 273.15)} (1 + 1.6077 \frac{\rho_v}{\rho_d}) \quad (9)$$

Resistances to heat transfer can be estimated assuming that forced convection prevails near the surfaces of the instrument (Campbell and Norman, 1998):

$$r_{a\ can} \approx 7.4 \sqrt{\frac{d_{can}}{U}} \quad (10)$$

$$r_{a\ ball} \approx 7.4 \sqrt{\frac{d_{ball}}{U}} \quad (11)$$

where  $d$  is the characteristic dimension of each element (0.042 m for the ball, and 0.133 m for the can);  $d_{can}=0.133$  m was computed from the radius of the curve making the top surface of the can). Both structural elements are assumed here to be cylinders and spheres, so no additional multiplier for  $d$  is required.

Assume that the fraction of the sensible heat flux affecting measurement  $fr$  ( $=H_P/H_I$ ) could be approximated by the ratio of pathlengths containing air influenced by  $H_P$  divided by the total mechanical pathlength of the instrument ( $l^{path}=0.128$  m). The

pathlengths affected by  $H_p$  will be the sum of the thermal boundary layer thicknesses of the can and the ball. Thus:

$$fr^{can} = \frac{l^{can}}{l^{path}} \quad (12)$$

$$fr^{ball} = \frac{l^{ball}}{l^{path}} \quad (13)$$

and  $fr = fr^{can} + fr^{ball}$ . The layers' thickness could be approximated, assuming laminar boundary layer and vertical instrument position, as follows:

$$l^{can} \approx \frac{5.5d^{can}}{\sqrt{Re}} + \frac{1}{2}tg(\alpha) * d^{win} \quad (14)$$

$$l^{ball} \approx \frac{5.5d^{ball}}{\sqrt{Re}} \quad (15)$$

$$Re = \frac{d^x U \rho}{\mu} \quad (16)$$

where  $Re$  is Reynolds number (Gates, 1980);  $d^{can}=0.033$  m (radius of the can);  $\alpha=20^\circ$  (angle between the bottom window and metal 'shoulders' around it);  $d^{win}=0.012$  m (radius of the flat portion of the window);  $d^{ball}=0.022$  m (radius of the ball);  $d^x$  is  $d^{can}$  or  $d^{ball}$ ;  $\mu$  is dynamic viscosity of the air. The air heated inside the sensor between windows and transducers is  $CO_2$  free, and its temperature fluctuations do not contribute to the flux correction.

## 4. Results

### 4.1. Electronics contribution – environmental chamber experiment

To evaluate contribution of the electronics in the sensor head to the heating of the instrument surface, an experiment was conducted in an environmental chamber (Model F466PC-1, Blue M Electronic Company, Blue Island, Illinois) with a vertical-down recirculating conditioning stream to ensure uniform mixing of the air. Thermocouples were attached to various parts of the instrument (side of the cylinder, lower window area, upper window area, and spar) and covered with small

pieces of foam to minimize direct heating and cooling of the thermocouple by chamber air.

Figure 2 shows the instrument surface temperatures plotted versus ambient temperature for the range from -25 to +50 C. The bottom window area was consistently warmer than ambient chamber air with an average relationship as follows:

$$T_s = 0.92 T_a + 4.83, r^2 = 1.00, n > 900 \quad (17)$$

Equation 17 holds for the original version of the instrument electronic board, housed in the white control box (version 1). Eq. 17 demonstrates that differences between ambient temperature and the surface temperatures of the lower window area increase with a decrease in ambient temperature: the instrument was warmer than ambient by +0.8 C at +50 C ambient, and by +6.8 C at -25 C ambient. Other parts of the instrument did not display significant difference from the ambient temperature, though all relationships were very tight, with little or no hysteresis. These observations are corroborated by the location of the majority of the internal instrument electronics, and particularly the heater for the instrument source, near the bottom window of the instrument.

A somewhat smaller influence of electronic heating was observed for the newer version of the instrument electronic board (version 2):

$$T_s = 0.93 T_a + 3.53, r^2 = 1.00, n > 900 \quad (18)$$

The instrument was heated by the electronics to +0.03 C above ambient at +50 C, and by +5.3 C at -25 C due to higher efficiency and lower heat dissipation of the new board configuration. Relationships were linear in all cases, with total number of samplings  $n > 900$ , grouped by ambient temperatures in 9 groups, and yielding r-square of 1.00.

Both of these equations (Eqs. 17 and 18) demonstrate a significant influence of the sensor head electronics on the instrument surface heating, especially at low ambient temperatures. Also, both are likely to be specific only to the version of the electronic board, and should hold for all instrument configurations and for various experimental setups. In principle, these relationships could be used, with appropriate assumptions and caution, to evaluate the effect of the surface heating on the measured flux (Burba *et al.*, 2005a,b).

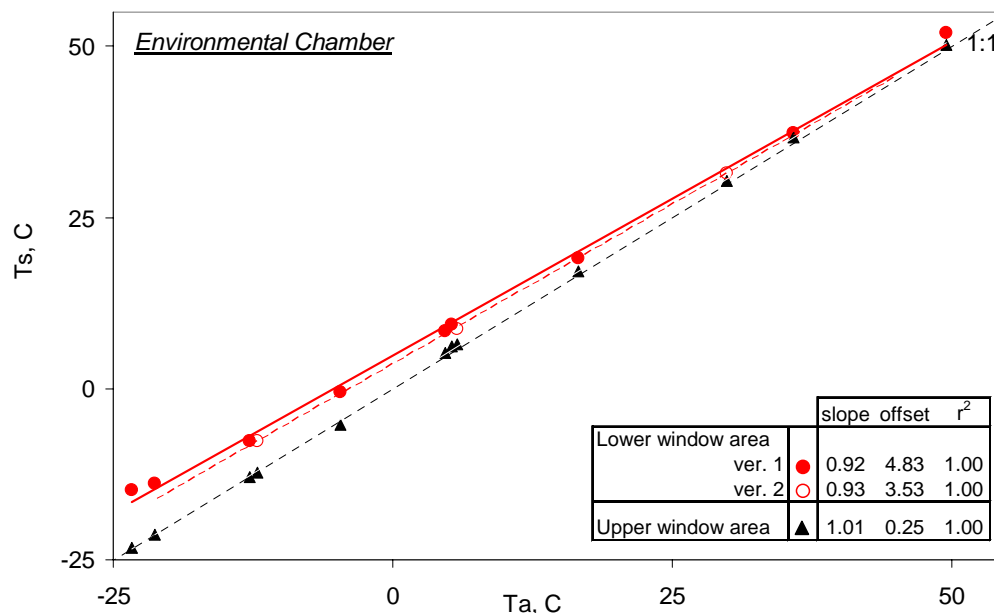


Figure 2. Instrument surface temperature ( $T_s$ ) is plotted versus air temperature ( $T_a$ ) in the climate controlled chamber for two versions of electronic boards. Each point on the plot is an average of 20-30 one-minute data points after temperature equilibrium between chamber air and instrument surface was achieved. Data gathered before equilibrium was achieved have been removed from the analysis.

#### 4.2 Ambient air warming near the instrument surface – LI-COR facility experiment

Field conditions are different from those in the environmentally controlled chamber, primarily due to factors influencing the instrument surface directly (not via electronics heating): sunlight, wind and radiative cooling. A field experiment is being conducted at the LI-COR experimental facility (Lincoln, NE) starting in October, 2005 to evaluate the resulting surface-to-air temperature gradient in field conditions with and without the influence of the electronics. During the experiment instrument power was turned off for several weeks and on for several months. Fine-wire thermocouples were attached to LI-7500 analyzer at the center of the lower window area approximately 0.5 mm and 1.0 mm above the lower window, and in the center of the upper window area. Ambient fine-wire thermocouple was installed 20 cm away from the open-path sensor.

Figure 3A demonstrates that air coming into the instrument path is warmed up significantly by the heated instrument surface in the ambient environment. Temperature gradients are very steep in the first 1 mm above the lower window area: for cold air in calm atmospheric conditions, gradients

may exceed 2 C per 1 mm, while during windy conditions gradients seem to decrease (Fig. 3A). During warm days gradients are considerably smaller than in cold temperature, while some wind effect is still observed (Fig. 3B).

Figure 3 C demonstrates that even without electronics heating (with power off) the instrument surface can be several degrees warmer than the ambient air in the middle of the day (likely due to sunlight), and several degrees cooler at night (due to radiative cooling). This phenomenon has important implications for any open-path instrument measuring flux: unless the instrument surface temperature is controlled to be similar to the ambient, instrument surface heating/cooling may significantly affect the measured flux.

#### 4.3 Combination of all factors affecting instrument surface temperature - experiment at Mead, NE

A field experiment to directly evaluate the influence of instrument heating on the measured  $\text{CO}_2$  flux during the off-season is being conducted (starting November, 2005) at the University of Nebraska Carbon Sequestration Program research site near Mead, Nebraska (in collaboration with S.B. Verma and A. Suyker). This site is equipped

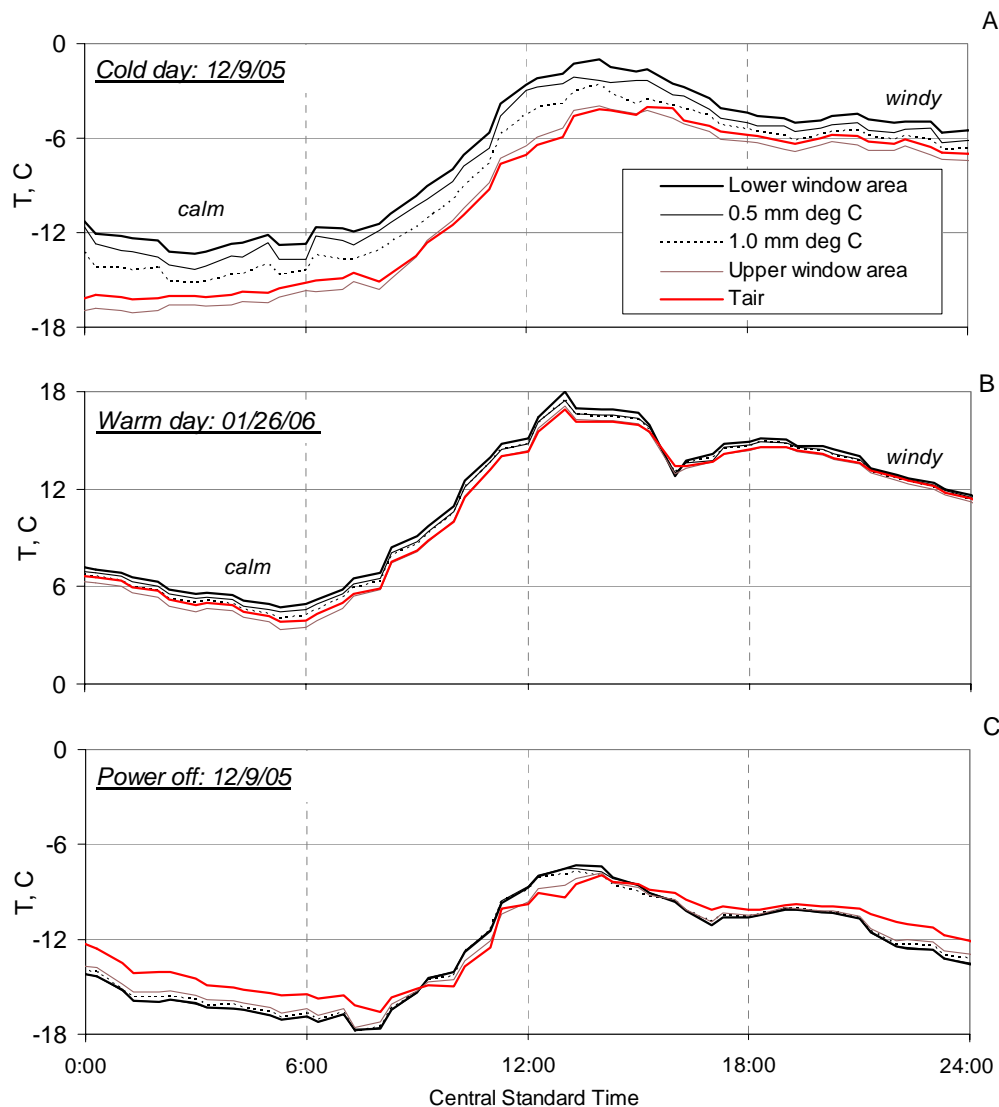


Figure 3. Daily patterns of surface temperature of the lower and upper window areas; air temperature was measured at approximately 0.5 mm and 1 mm above the lower window, and in the open air away from the instrument on selected days: (A) cold day, 12/9/05; (B) warm day, 1/26/06; and (C) day with instrument power turned off, 12/9/05. LI-COR facility experiment.

with a comprehensive Eddy Covariance station, which has an open-path  $\text{CO}_2/\text{H}_2\text{O}$  gas analyzer (LI-7500), and a complete set of instruments for measuring weather and radiation (Suyker *et al.*, 2005). Fine-wire thermocouples were attached to an LI-7500 open-path analyzer near the lower window, on the side of the cylinder, on a spar, and near the upper window. All thermocouples were painted with the same titanium oxide paint as the body of the instrument to assure a similar albedo.

Relationships between the air and instrument surface temperatures near the lower and upper windows are shown in Fig. 4. Similar to the

environmental chamber experiment, the temperature of the upper window was not significantly different from the ambient, at least for the majority of the data (linear regression yielded slope of 0.99 and offset of 0.23 C). The lower window area, however, was warmer than ambient, but not as much as inside of the environmental chamber. Linear fits from all experiments to date are shown in Table I. Ambient experiments (LI-COR facility and Mead) produce consistently lower  $T_s$  for the same  $T_a$ , as compared to the environmental chamber. We attribute this to better thermal exchange in ambient conditions due to

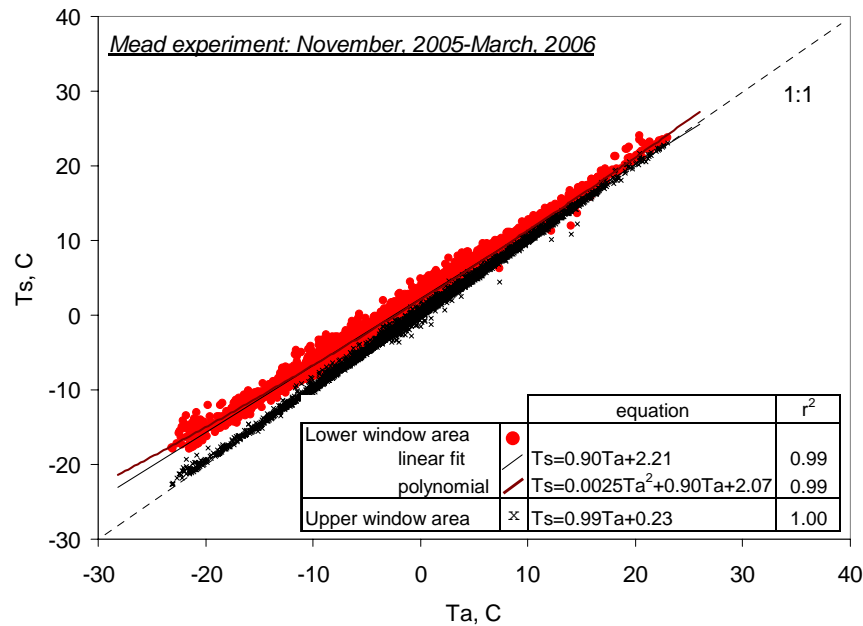


Figure 4. Hourly values of instrument surface temperature ( $T_s$ ) at the lower and upper window areas plotted versus air temperature ( $T_a$ ) during the period from November, 2005 to March, 2006.

wind convection, and due to radiative cooling at night (as seen in Fig. 3C). This is somewhat corroborated by frequently observed condensation and dew formation near the top window in cold and humid field environments.

Another important feature of the ambient relationship between  $T_s$  and  $T_a$  is that the best fit

may not actually be linear, because a linear fit would imply the occurrence of the cooling of the surface at ambient temperatures above +20 to +30 C. It is difficult to justify such a situation, in which the electronics would cool the instrument below the ambient temperature.

Experiment	Ver.	Influencing factors	lower window area				upper window area			
			slope	offset	r <sup>2</sup>	n	slope	offset	r <sup>2</sup>	n
Climate control chamber	1	electronics	<b>0.92</b>	<b>4.83</b>	1.00	>900	-	-	-	-
Climate control chamber	2	electronics	<b>0.93</b>	<b>3.53</b>	1.00	>900	<b>1.01</b>	<b>0.25</b>	1.00	>900
Li-Cor Facility*	2	electronics & ambient	<b>0.89</b>	<b>2.23</b>	0.99	>2000	<b>1.00</b>	<b>-0.22</b>	1.00	>2000
Mead experiment*	2	electronics & ambient	<b>0.90</b>	<b>2.21</b>	0.99	>1500	<b>0.99</b>	<b>0.23</b>	1.00	>1500

\*non-linear may be better: regression fit will become more complete after warm-season data become available

Table I. Linear fit parameters of the relationship between ambient air temperature ( $T_a$ ) and instrument surface temperature ( $T_s$ ) for the lower and upper window areas:  $T_s = \text{slope } T_a + \text{offset}$ . Influence of the heating by electronics (chamber experiment) is noticeably offset by atmospheric exchange for the outside experiments. Upper window  $T_s$  did not seem to be consistently affected by  $T_a$ . (\*) Non-linear may be better: regression fit will become more complete after warm-season data become available.

With only colder temperatures available in the Mead experiment to date, a polynomial fit can not be confidently extrapolated beyond +20C. However, a polynomial relationship for the ambient

temperature range from -25 to +20 C does seem to fit the data as well or better, than a linear fit (Fig. 4):

$$T_s = 0.0025T_a^2 + 0.90T_a + 2.07, r^2 = 0.99, n > 1500 \quad (19)$$

Temperatures for the relationship presented in Eq. 19 were measured directly, and all factors influencing  $T_s$  (e.g., electronics, sunlight, radiative cooling, and wind exchange) have been incorporated into the actual measurement of  $T_s$ ,

however, this relationship may also be less general than those presented in Eqs. 17 and 18, and may vary from site to site and from one setup to another (because of differences in shadowing of the instrument from sun and wind, temperature ranges, instrument orientation etc.), so it should be used with caution.

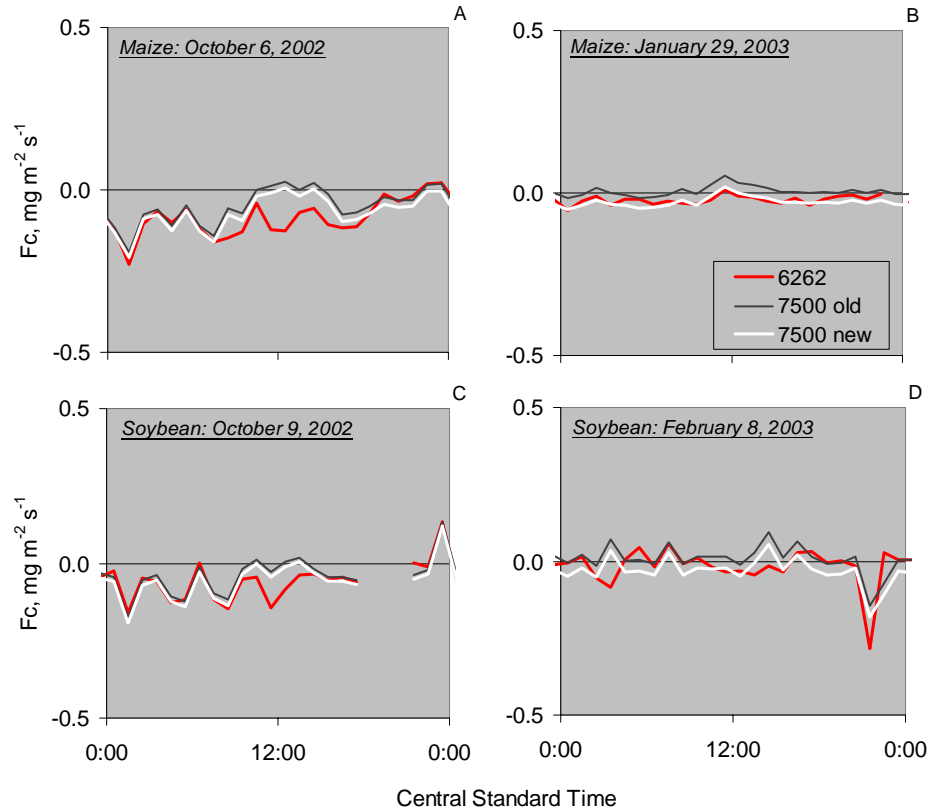


Figure 5. Daily patterns of hourly carbon dioxide flux ( $F_c$ ) as obtained using closed-path LI-COR analyzer (6262), traditionally corrected LI-7500 (7500 old), and flux corrected with a proposed additional member of WPL correction (7500 new): (A) maize, warm day; (B) maize, cold day; (C) soybean, warm day; (D) soybean, cold day. Uptake of  $\text{CO}_2$  is positive and release is negative.

#### 4.4. Applying corrections to pre-existing data

To take advantage of exactly the same instrument configuration and setup, we have used  $T_s$  relationship obtained from Mead experiment in 2005-06 (Eq. 19), and applied it via Eq. 9 to the traditionally corrected  $F_c$  flux data from 2002-03 from the same study site under maize, and from a similar neighboring site under soybean (data courtesy of S.B. Verma and A. Suyker: Suyker *et al.*, 2005).  $F_c$  from the LI-7500 was compared to that from a closed-path instrument, the LI-6262, which was not affected by instrument surface heating, during off-season with no green canopy,

and during the entire year.  $F_c$  from the LI-7500 with the traditional form of WPL was compared to that from the LI-7500 with an additional correction due to instrument surface heating.

Figs. 5A-D compare daily patterns of hourly  $F_c$  from the LI-6262 and LI-7500 (corrected traditionally and with proposed additional correction) during warm and cold periods without a green canopy. Uptake of  $\text{CO}_2$  is positive and release is negative. An additional term in WPL (Eq. 9) helped to reduce the apparent off-season uptake and made the LI-7500 and LI-6262 match reasonably well for such a small overall flux (fluctuations are in the order of  $0.05 \text{ mg CO}_2 \text{ m}^{-2} \text{ s}^{-1}$ ). The magnitude



of the additional correction itself was even smaller: 0-0.07  $\text{mg CO}_2 \text{ m}^{-2} \text{ s}^{-1}$ . The relative size of the correction increased during cold periods with  $F_c$  fluctuations near zero. Both the post-maize field (with substantial residue) and the soybean field (very little residue) have shown similar results.

To assess the yearly patterns of the proposed correction, hourly values are shown for the entire

year, including growing season, for maize and soybean in Figs.6(A-B). As predicted from Eqs. 9 and 19, the largest corrections were observed during coldest periods. The majority of cold-season corrections ranged from 0.025 to 0.07  $\text{mg m}^{-2} \text{ s}^{-1}$ . Corrections were significantly smaller during warm season, ranging primarily between 0.005 and 0.02  $\text{mg m}^{-2} \text{ s}^{-1}$  in both sites.

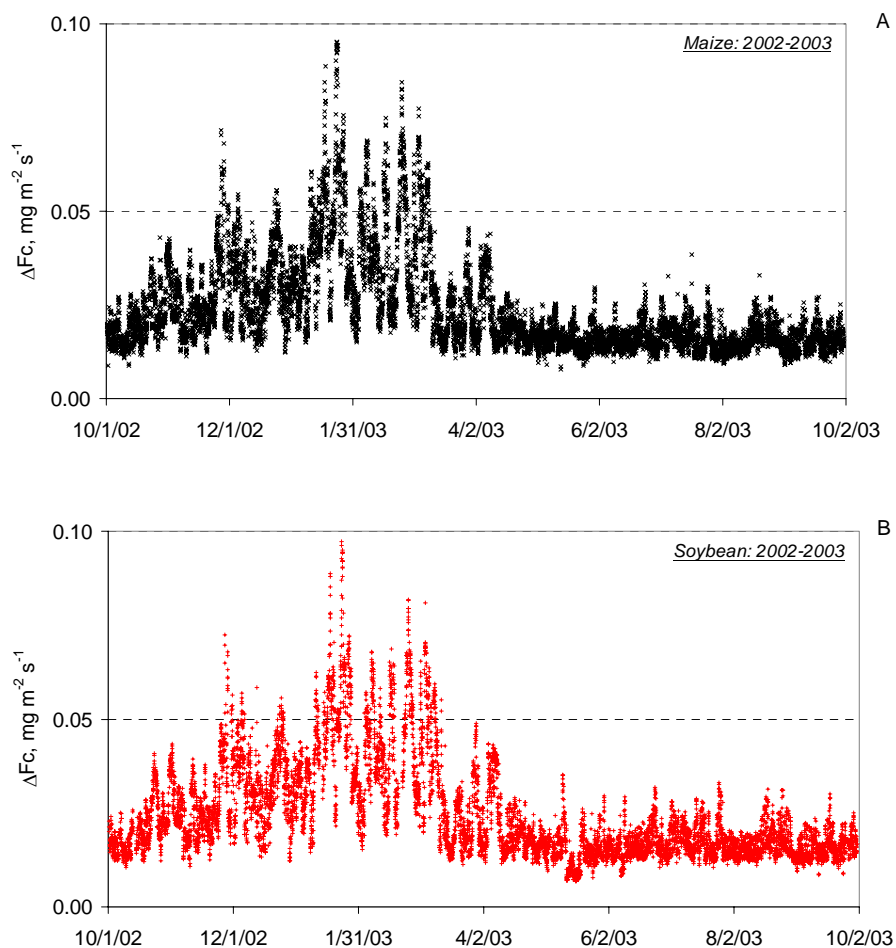


Figure 6. Seasonal patterns of the hourly values of the proposed additional member of WPL due to instrument surface heating ( $\Delta F_c$ ): (A) irrigated maize; (B) rainfed soybean. Note the minimal magnitude of this correction - scale on the plot is from 0 to 0.1  $\text{mg CO}_2 \text{ m}^{-2} \text{ s}^{-1}$ . Uptake of  $\text{CO}_2$  is positive and release is negative.

The impact of the proposed correction on the resultant hourly  $F_c$  is demonstrated in Figs.7(A-D). The ratio of  $F_c$  from the LI-6262 to that from the traditionally corrected LI-7500 is plotted versus  $T_a$  for the period from October 2002 through October 2003. In both maize (Fig. 7A) and soybean (Fig. 7C), the ratio significantly deviated from 1 when  $T_a$

was below 20°C, and changed sign below 10°C, indicating physiologically unreasonable  $\text{CO}_2$  uptake. Using the proposed correction (Figs. 7B,D) eliminated most of the sign flipping, and returned the ratio to nearly 1. It is important to note that correction did not just increase the ratio, but greatly reduced variability on both sides of zero (Figs.

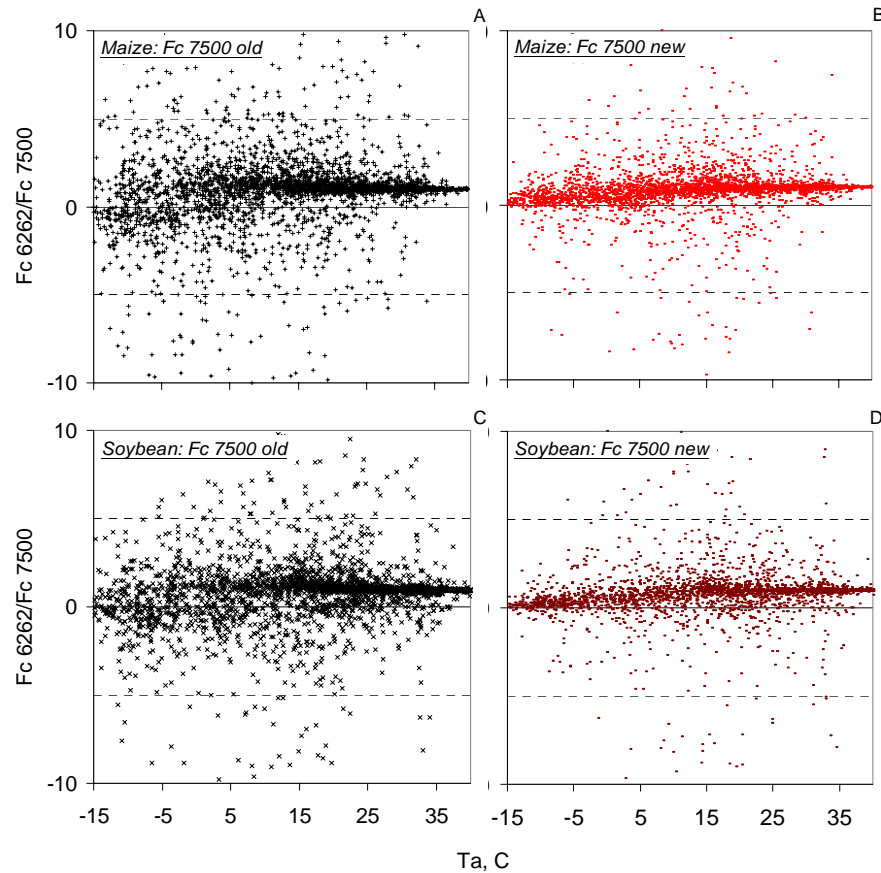


Figure 7. Hourly ratio of carbon dioxide flux measured with LI-6262 (Fc 6262) to that measured with LI-7500 (Fc 7500) corrected in a traditional way (old) and corrected with a proposed additional member of WPL correction (new): (A) maize, traditional WPL; (B) maize, WPL with additional term; (C) soybean, traditional WPL; (D) soybean, WPL with additional term. The period is from October 2002 to October, 2003. Additional correction improved both means and distribution of the data, and have not just shifted all data upward.

7B,D). It is also worth mentioning that very small quantities are divided in these ratios, and therefore some variability should be expected, especially at low temperatures.

The contrast between seemingly small hourly values of the proposed correction and its impact on the integrated fluxes can be demonstrated by comparing Figs. 8 (A, B) and Table II (A-B). Using the proposed correction reduced the slope from 3% to 2% and reduced the offset from 0.03 to 0.01  $\text{mg m}^{-2} \text{s}^{-1}$  in maize (Fig. 8A), and from 0.03 to zero  $\text{mg m}^{-2} \text{s}^{-1}$  in soybean (slope was not affected; Fig. 8B). This shows that off-season fluxes are somewhat affected, while growing season fluxes did not significantly change. In contrast, the impact of the correction on off-season integrations of Fc was extremely important (Table II). The proposed correction dramatically reduced the number of uptake hours (Table IIA), from 716 to 252 hours in maize, and from 571 to 189 hours in soybean. As a

result, the underestimation of off-season losses of  $\text{CO}_2$  (and resulting overestimation of the yearly uptake of  $\text{CO}_2$ ) was reduced several fold (from -80 g  $\text{CO}_2$  to -304 g in maize and from -32 g  $\text{CO}_2$  to -186 g in soybean (Table IIB: uptake is positive and release is negative). After applying the proposed correction the LI-6262 and LI-7500 data matched to within few percent, which is well within the accuracy of the Eddy Covariance method.

## 5. Discussion

### 5.1 Note of caution

The method described above for correcting Fc due to instrument surface heating was relying, on the assumption that the instrument was oriented nearly vertically. There are two variables in Eq. 9 that would be significantly affected by different instrument configurations:  $f_r$  and  $T_s$ . The

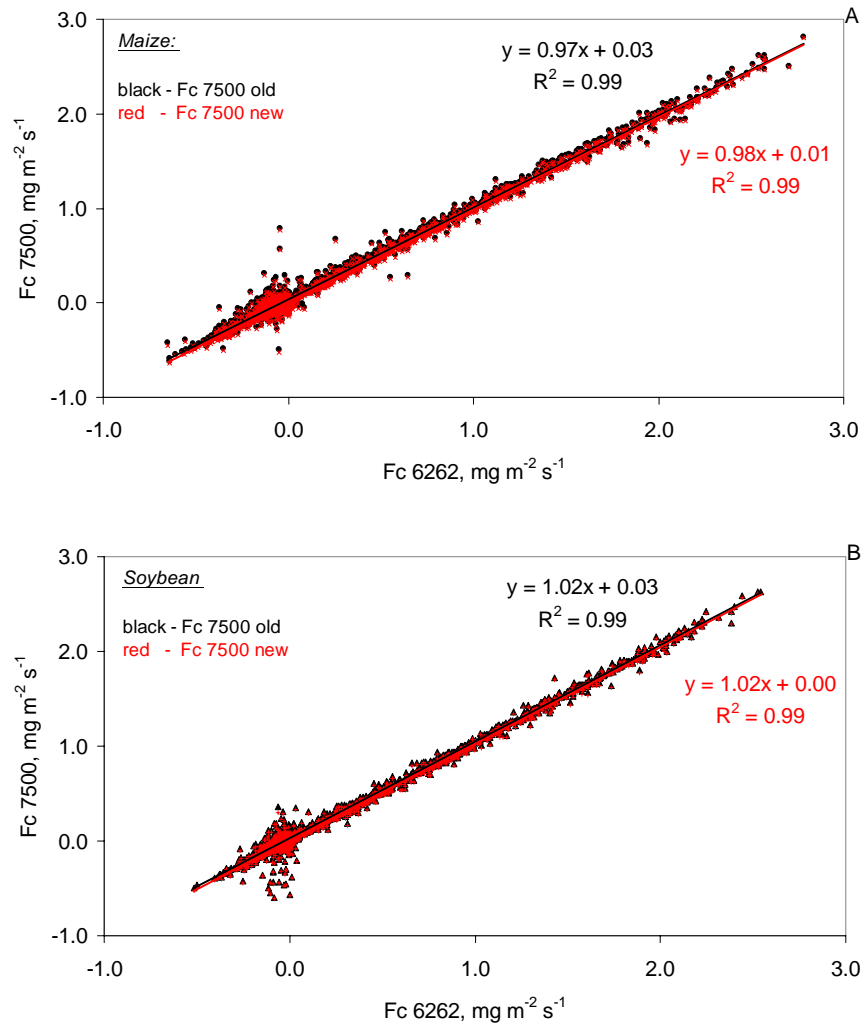


Figure 8. Hourly carbon dioxide flux measured with LI-7500 (Fc 7500) plotted versus that measured with LI-6262 (Fc 6262) in: (A) maize, and (B) soybean during the period is from October 2002 to October, 2003. 'Fc 7500 old' was corrected in a traditional way, and 'Fc 7500 new' was corrected with a proposed additional member of WPL correction. Additional correction was so small as compared to the hourly fluxes during the growing season, that the latter were not noticeably affected. Uptake of CO<sub>2</sub> is positive and release is negative.

A			
Off-season uptake hours	LI-6262	LI-7500 old	LI-7500 new
<i>Irrigated maize fallow</i>	131	716	252
<i>Rainfed soybean fallow</i>	138	571	189

B			
Off-season CO <sub>2</sub> release, when both 6262 and 7500 available, g C	LI-6262	LI-7500 old	LI-7500 new
<i>Irrigated maize fallow</i>	-324	-80	-304
<i>Rainfed soybean fallow</i>	-175	-32	-186

Table II. Comparison of the (A) off-season uptake hours and (B) integrated carbon dioxide release between a closed path analyzer (LI-6262), traditionally corrected open-path data (LI-7500 old) and data corrected using the proposed additional member of WPL correction (LI-7500 new). All tables and plots include only hours with complete data: when actual readings from the LI-6200, LI-7500, and other instruments used in the proposed corrections were available. Non-stationary conditions, rain, snow, instrument malfunctions and other filled-in periods were excluded to assure proper comparison between Fc7500 and Fc6262. Off-season periods are periods without green foliage area from October 1 to April 30.

orientation of the instrument may impact the  $f_r$  term, since the instrument would not be vertical, and the portion of the path affected by warm air may be higher than assumed for a nearly-vertical instrument. Also, in such a situation,  $T_s$  should include the influence of the can surface temperature that would now also affect the path, in addition to the window area temperature. Wind direction in a non-vertical configuration would be an important factor as well, since a configuration with a significantly inclined sensor would not be symmetrical for all wind directions. In addition to instrument orientation, the placement of other instruments and the tower might affect both  $f_r$  and  $r_a$  in Eq. 9, thus affecting the correction, especially when wind blows through the structures into the LI-7500 path. Therefore, the findings presented here should be treated with caution, as only an update on the ongoing investigation of the impact of instrument surface heating on measurements made by a nearly-vertical open-path  $\text{CO}_2/\text{H}_2\text{O}$  analyzer.

### 5.2 Alternative way to evaluate effect of various sensor configurations

In some cases there may be a way to evaluate the effects of a particular complex sensor configuration on  $f_r$  and  $r_a$  in Eq.9, and thus avoid some assumptions (*e.g.*, near-vertical sensor position, prevalence of laminar boundary layer around sensor parts, absence of flow obstruction from other nearby sensors). If the correct value of flux is known from closed path instrument or could be confidently assumed for a range of wind speeds and wind directions, Eq.9 may be solved for  $f_r/r_a$  ratio. This would establish a site-specific  $f_r/r_a$  ratio for different wind speeds and directions, assuming these relationships would not change significantly with temperature, humidity or pressure. Such solution may include the short-term use of the closed-path sensor (*e.g.*, LI-6262 or LI-7000) as standard, or establishing periods when flux value should be physiologically close to zero (*e.g.*, extremely low temperatures below -25 or -30 °C). The rest of the data could be corrected for various sensor configurations using these ratios in Eq.9 in place of the Eqs. 9-16. This approach should be treated with special care due to possible statistical errors involved in estimating the  $f_r/r_a$  ratio for various wind speeds and directions, and due to the number of data points required to construct confident empirical relationships; however, using such methods on pre-existing flux data from sites

with complicated sensor configurations is perhaps still more beneficial than rejecting large periods in the measurement year.

### 5.3 Future research

The data in the ongoing experiments were collected primarily during cold conditions with few regression points above 15°C, and with predominantly low fluxes. This forced us to apply the empirical relationship between directly measured  $T_s$  and  $T_a$  developed in 2005-2006 to the  $F_c$  data from 2002-2003. With more data to be collected during the warm season of 2006, further tests will include comparison of fluxes between the closed path LI-6262 and open path LI-7500 for a wide range of directly measured surface temperatures.

There are several other steps that may help to further study and manage the effects of instrument heating. Having thermocouples on the surface near the lower and upper windows would help to specify the proposed correction without the difficulty of having to estimate  $T_s$  (*e.g.*, Eqs. 16-18). Further experiments on the best sensor orientation might also be done to minimize the effects of instrument surface heating. Particularly, upside-down sensor positioning might reduce the effect of the heating on the flux in all directions. Further research is also needed to evaluate, test and fine-tune the proposed concept for various environments, and for different manufacturers of open-path  $\text{CO}_2$  analyzers.

## 6. Summary and conclusion

The influence of surface heating on the  $\text{CO}_2$  flux measured with the LI-7500 open path gas analyzer is being examined in one laboratory study and two field experiments. Experiment in a convective environmental chamber showed that the sensor head electronics substantially contributed to surface heating, and that the surface of the open-path analyzer could be 5-7°C warmer than the ambient air due to electrical energy dissipation in the instrument head. The difference was largest at low ambient temperatures and decreased linearly with an increase in the ambient temperature.

A field experiment at the LI-COR facility, which is still in progress, has shown that large temperature gradients (up to 2 °C per 1 mm) can exist just above the lower window of the instrument, implying strong sensible heat fluxes in the first few mm above the instrument surface. The thermal

boundary layer was thicker during calm conditions, as expected. During the day, surface heating occurred due to solar radiation even when the electronics were not powered. Our measurements also suggest that emission of long-wave radiation can cause surface cooling at night to temperatures below ambient.

An experiment is in progress near Mead, NE also in which we are comparing  $F_c$  measured with an open-path LI-7500 to  $F_c$  measured by a closed path LI-6262, which is not affected by surface heating and is viewed as “standard”. To date, this experiment has demonstrated, that instrument surface temperature is directly and strongly related to air temperature (Eq. 19), but lack of data during warm season did not allow for confident extrapolation of the relationship beyond +20 C.

An additional term due to instrument surface heating was introduced as a part of the Webb-Pearman-Leuning correction. The temperature relationship developed in the Mead experiment in 2005-2006 (Eq. 18) was applied to LI-7500 data from 2002-03 in maize and soybean, and was compared against LI-6262 data from the same period. Even with partial results from the experiments available, a significant reduction in apparent  $\text{CO}_2$  uptake during off-season periods was observed as a result of applying the additional correction, while fluxes during the growing season have not been noticeably affected. The correction also resulted in elimination of most of the wrong signs from off-season open-path  $\text{CO}_2$  measurements, a significant reduction in variability of the data, elimination of the offset between measurements made with the LI-6262 and the LI-7500, and in a significant improvement in off-season integrations of  $\text{CO}_2$  exchange. A framework was created to develop a site-specific practical correction due to instrument heating. The proposed additional term in the Webb-Pearman-Leuning correction may prove useful for future year-round  $\text{CO}_2$  flux research. The technique to estimate the proposed correction for pre-existing data may help in better interpretation of previously collected information.

## Acknowledgements

We would like to acknowledge a number of scientists who contributed to this study via valuable discussions, advice, data sets, and other personal communications. Particularly we want to thank Drs. Shashi Verma and Andrew Suyker for providing

data and facilities for the Mead experiment, and for numerous valuable help and advice. We also thank Drs. Brian Amiro, Robert Clement, David Cook, Marc-André Giasson, Ryuichi Hirata, Ray Leuning, Bill Massman, Walt Oechel, Howard Skinner, and Jon Welles for their interest in developing the topic. We acknowledge help provided by Jerry Ficke of LI-COR on LI-7500's electronics and other properties, and for assistance with the environmental chamber experiment. We also thank Fluxnet, Ameriflux, Fluxnet-Canada, and Carbo-Europe networks for providing opportunity for the discussions and for access to flux data obtained with LI-7500 and LI-6262 instruments.

## References:

- Ameriflux, 2006. “Ameriflux Sites Information.”   
 <<http://public.ornl.gov/ameriflux/site-select.cfm>>
- Burba G. G., Anderson D. J., Xu L., and D. K. McDermitt. 2005a. Solving the off-season uptake problem: correcting fluxes measured with the LI-7500 for the effects of instrument surface heating. Progress report of the ongoing study. PART I: THEORY. Poster presentation. AmeriFlux 2005 Annual Meeting, Boulder, Colorado.
- Burba G. G., Anderson D. J., Xu L., and D. K. McDermitt. 2005b. Solving the off-season uptake problem: correcting fluxes measured with the LI-7500 for the effects of instrument surface heating. Progress report of the ongoing study. PART II: RESULTS. Poster Presentation. AmeriFlux 2005 Annual Meeting, Boulder, Colorado.
- Cambell, G. S., and J. M. Norman, 1998. Environmental Biophysics. Second Edition. Springer Science, New York: 286 pp.
- Gates, D. M. 1980. Biophysical Ecology. Springer-Verlag, NY.
- Hirata R., Hirano T., Mogami J., Fujinuma Y., Inukai K., Saigusa N., and S. Yamamoto, 2005.  $\text{CO}_2$  flux measured by an open-path system over a larch forest during snow-covered season. *Phyton*, 45: 347-351
- Monteith, J. L., 1963. Gas exchange in plant communities. *Environmental Control of Plant Growth*. L. T. Evans, ed. Academic Press, New York: 95-112
- Suyker, A.E., S.B. Verma, G.G. Burba, and T.J. Arkebauer. 2005. Gross primary production and ecosystem respiration of irrigated maize and irrigated soybean during a growing season. *Agricultural and Forest Meteorology*, 131: 180-190
- Verma, S. B., and A. E. Suyker. Personal Communications. September-December, 2005.
- Webb, E. K., Pearman, G. I., and R. Leuning, 1980. Correction of flux measurements for density effects due to heat and water vapour transfer. *Quart. J. R. Met. Soc.*, 106: 85-100