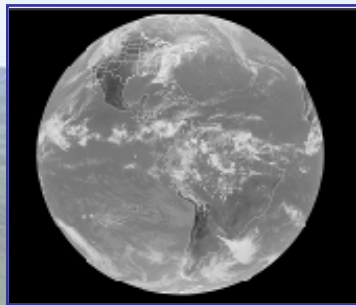


GOES-R Downlink Services for Users

Modifications in Satellite Interface Requirements to User Segments*

John Schimm (john.schimm@ngc.com), Jose Castellon, Larry Kincaid, Larry Urner



GOES Re-Broadcast
Formerly GOES Variable Format

Key changes:

- Data rate, 31 Mbps
 - Center freq., 1690 MHz
 - Modulation, OQPSK/8PSK*
 - FEC code, LDPC*
 - Dual-circular polarization
- *Not finalized



Emergency Managers Weather Information Network

Key changes:

- Data rate, 15.654 kbps
- New channel assignments



Low-Rate Information Transmission System
Formerly Weather Facsimile

Key changes:

- Modulation, OQPSK
- Data rate, 256 kbps
- New channel assignments



Data Collection System

Key changes:

- New channel assignments
- DCPC is now 300 bps, BPSK/CDMA
- DCPR 100 bps terminals not listed



Search and Rescue

Key changes:

- 100 bps beacons not listed

*Based on documents made available by the US Government

This poster does not reflect the views or policy of the GOES-R Program Office.