

Panasonic Avionics Corporation

GLOBAL AIRCRAFT AND MARINE COMMUNICATION, TRACKING, AND WEATHER DATA COLLECTION

Neil Jacobs
Panasonic Avionics Corporation

AMS Washington Forum 2015

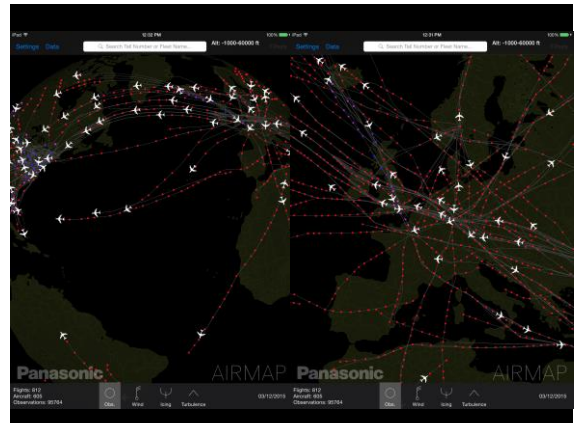
© 2014 Panasonic Avionics Corporation, Proprietary and Confidential



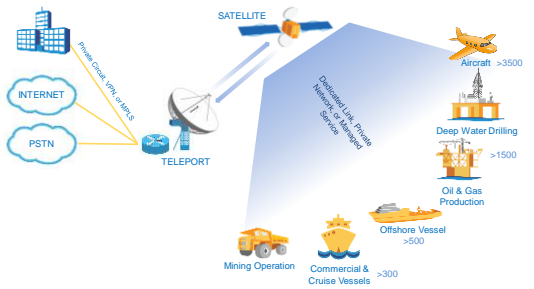
TAMDAR

Tropospheric Airborne Meteorological Data Reporting

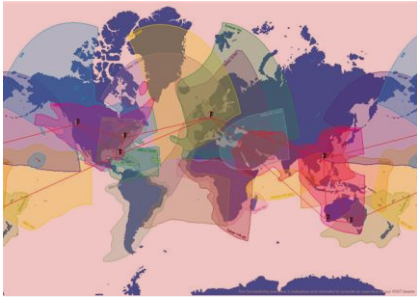
Summary	
Aircraft	G-FBEH
Flight #	566450
Pressure Altitude	15960 ft
GPS Altitude	16000 ft
Air Temperature	-7.40 °C
Relative Humidity	45.00 %
Wind	308° / 79.00 knots
Ice Conditions	No Ice
Indicated Airspeed	260 knots (GS)
EDR median/peak	0.0 / 0.0
Min. since peak EDR	0.0
56° 17' 48" N, 1° 46' 54" W	



ITC Global Panasonic
THE NEXT LEVEL OF SATELLITE COMMUNICATIONS ACROSS AIR, LAND AND SEA



Global Ku-band coverage and global Iridium coverage



Panasonic Modeling Suite

Regional:

Rapid Cycling 4D-Var EnKF Hybrid WRF (4 km North America / 1 km CONUS) – joint with NCAR
 4D-Var Tropical WRF (12 km Atlantic and Pacific) – joint with NCSU

Global:

Hybrid 4DEnVar Deterministic GFS – 13 km – joint with UMD
 80 Member dual resolution EnKF GFS Ensemble – joint with NCSU

QC:

RT-FDDA-WRF (4 km domains covering NA, EU/UK, Asia, ME) – joint with NCAR

All models (except QC) are 2-way coupled to HYCOM – general circulation ocean model

Marine forecast output/services:

Wind, temperature, precip, storm tracks/intensity, surge, seas, swell, currents, etc.